

Hurricane Andrew

Redefining Florida's Preparedness
Model.....





Andrew's Impact on Florida

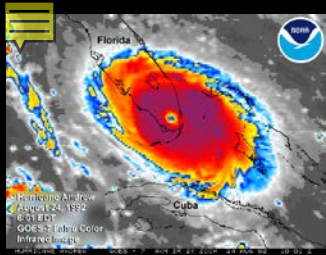
28,066 homes destroyed
107,380 homes damaged
180,000 persons left homeless
82,000 businesses destroyed/damaged
32,900 acres of farmland damaged
31 public schools destroyed/damaged
59 health facilities & hospitals damaged
9,500 traffic signs & signals damaged
3,300 miles of power lines destroyed
3,000 water mains damaged
1.4 million residents lost electricity
80,000 residents lost phone service



Source: Lewis Commission Report

Florida City

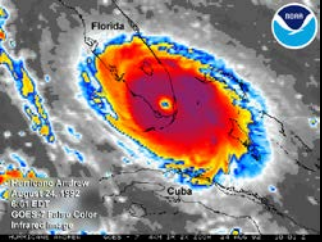




Lewis Commission

- Improve Communications
- Strengthen evacuation, shelter, post disaster response and recovery plans
- Enhance intergovernmental coordination
- Improve Training
- Sufficient funding available for emergency management

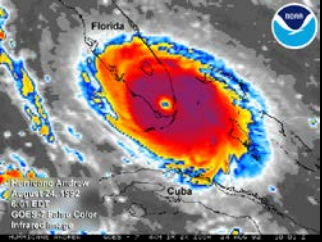




Communications & Evacuation Planning

- Satellite Comm System in every county.
- Developed statewide evacuation planning
- Planning requirements for hospitals, nursing homes, ALFs as part of their license
- Automatically suspending tolls on Florida's highways
- Policy on Marina Evacuation
- Improvements to I-75 & U.S. 1 in Miami-Dade County to improve Keys Evacuation

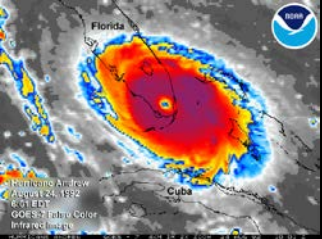




Shelter Planning

- Statewide Shelter Plan/Program
- Statewide public shelter design criteria for schools
- Statewide Shelter Survey
- Changes to State Building Code to address wind missile impacts

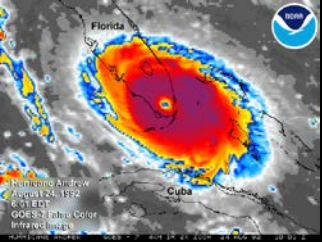




Intergovernmental Coordination

- Development of State Emergency Response Team (SERT)
- State Responds as functional components – not individual agencies/programs
- State EM Planning consistent with Federal Response Plans/Frameworks
- Minimum criteria for county post-disaster/recovery efforts





Training/Other

- Annual Statewide Hurricane Exercise
- Mutual Aid
 - Statewide Mutual Aid Agreement
 - Florida Fire Chiefs Association
 - Florida Mutual Aid Plan
 - EMAC
- Allowing counties to declare a State of Local Emergency for seven days
- TRUST FUND!!!!!!!



Provided the Plug....

