

Unit 5: Integrating With State and Federal Partners



FEMA

Visual 5.1

Unit Objectives

At the end of this unit, you will be able to:

- **Describe circumstances when state and federal partners might be integrated into the JIS/JIC**
- **Describe the state JIC organizational structures and resources**
- **Describe the federal ESF #15 organizational structures and resources**
- **Identify strategies for building partnerships at all levels**



FEMA

Visual 5.2

Public Safety Responsibility

State, tribal, and local governments:

- **Are generally responsible for the health, welfare, and safety of their citizens**
- **Carry out these mandates using authorities enumerated in their laws and codes**



FEMA

Visual 5.3

Escalating Incidents Require Resources

The previous scenario was managed entirely by local responders – most common

- **Initial response**
- **Automatic aid**
- **Mutual aid agreements**

Some instances require additional resources

- **Local state of emergency**
- **County (Parish – Borough) state of emergency**
- **State-wide state of emergency**



FEMA

Visual 5.4

Federal Involvement – The Next Step

There are many types of disaster aid available for states when disasters strike

- Federal agencies have various legal authorities for declaring disasters (Small Business Administration, Agriculture Department, Federal Emergency Management Agency)
- Record keeping throughout an incident is critical for obtaining these declarations
- Declarations provide varied levels of support
- Declarations may come shortly after an incident or months later.



FEMA

Visual 5.5



All Incidents Begin and end Locally

- **As more Emergency Operation Centers open, more Joint Information Centers will also open**
- **All JICs focus on getting the right information to the right people at the right time so they are empowered to make the right decisions.**



FEMA

Visual 5.7

Understanding the State JIC



FEMA

Visual 5.8

Federal Joint Information Centers

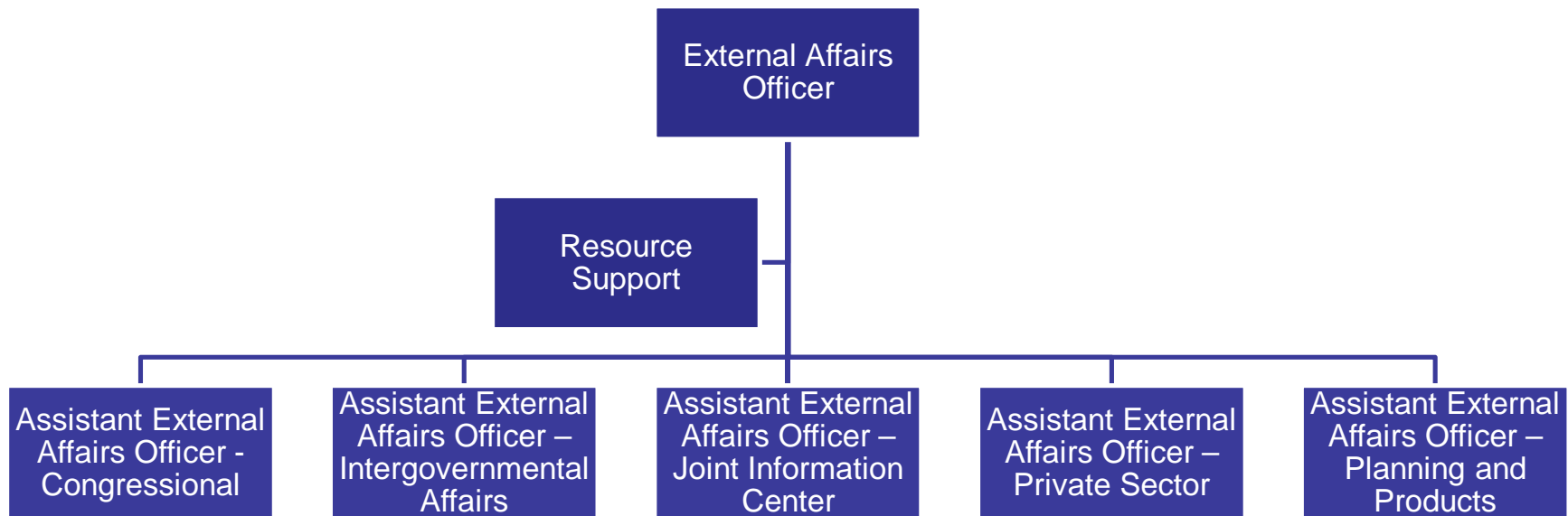
- **External Affairs**
- **One of 14 Emergency Support Functions (ESF) used by FEMA**
- **ESF #15**



FEMA

Visual 5.9

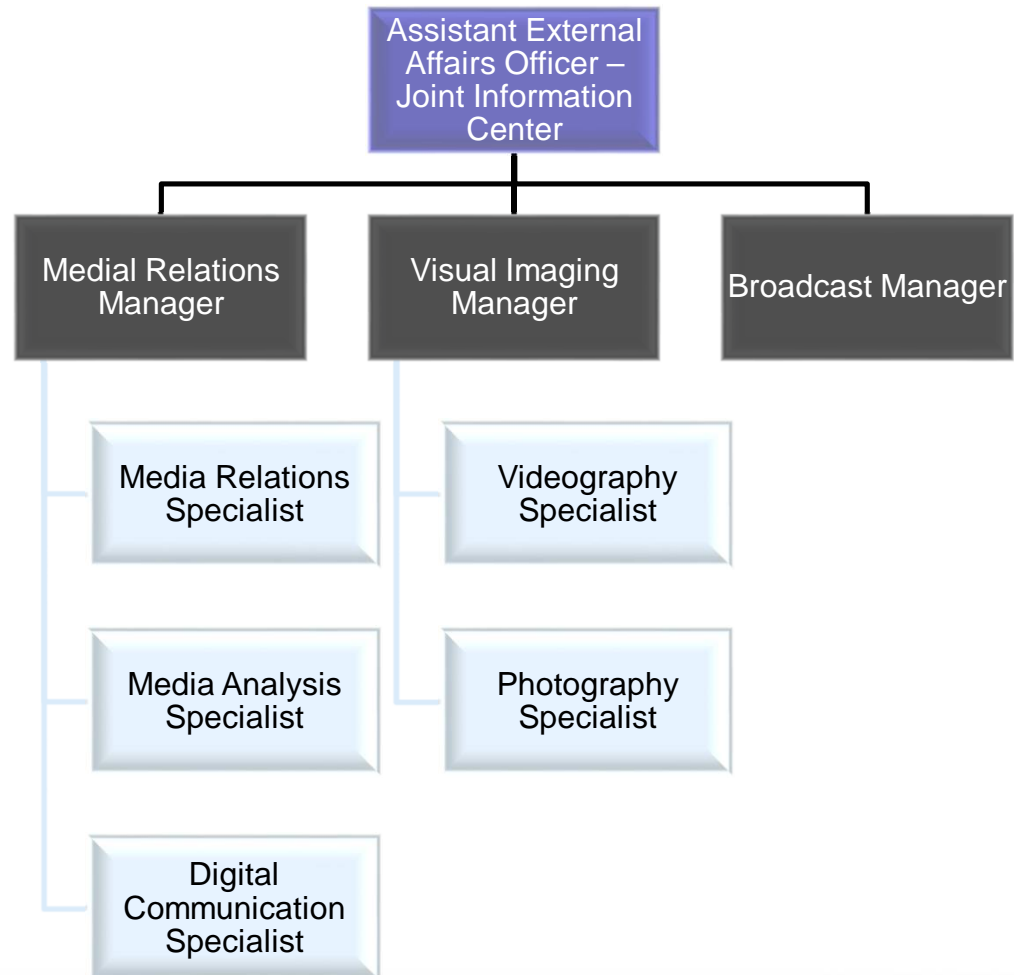
Federal ESF #15 Organization



FEMA

Visual 5.10

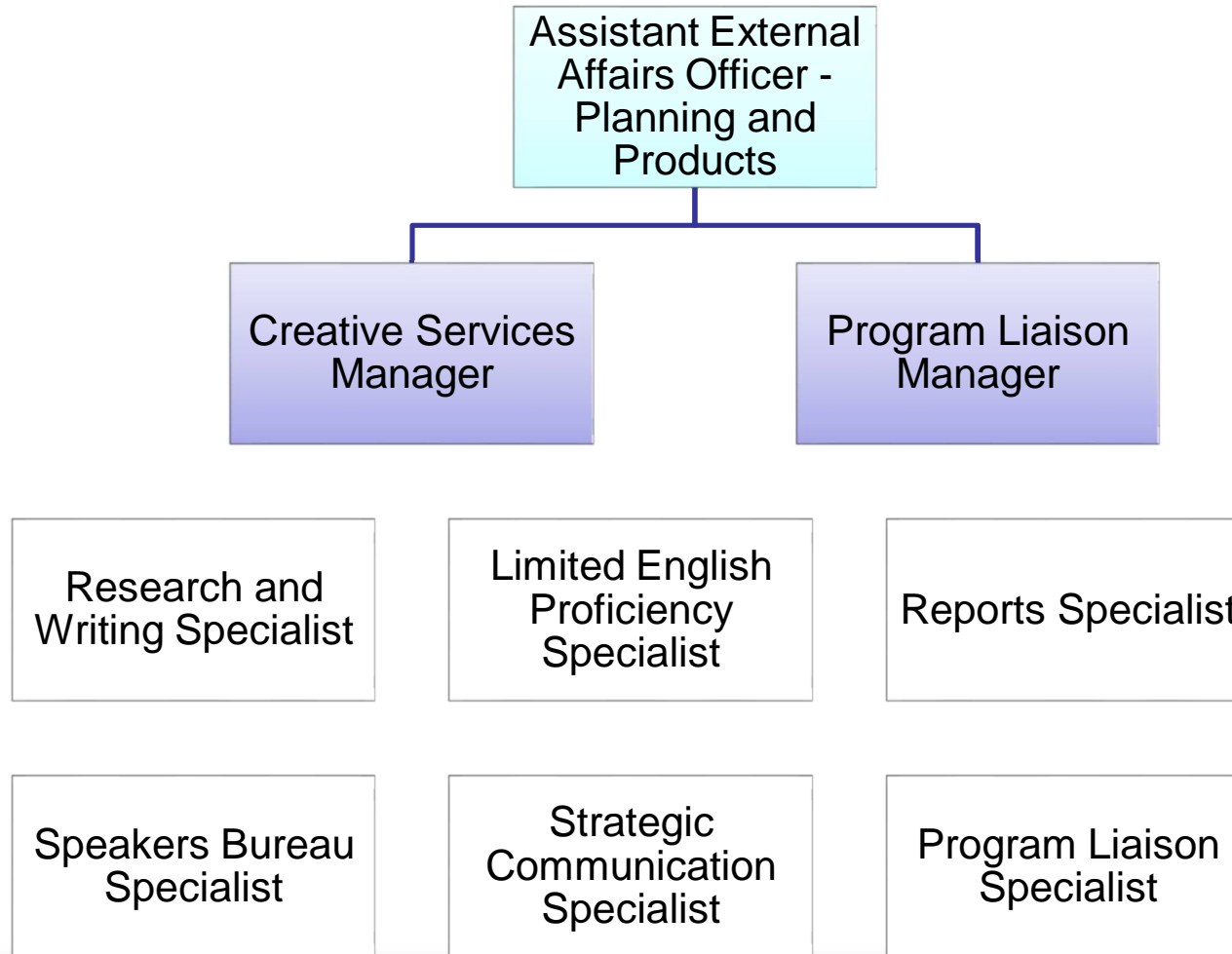
ESF #15 Joint Information Center



FEMA

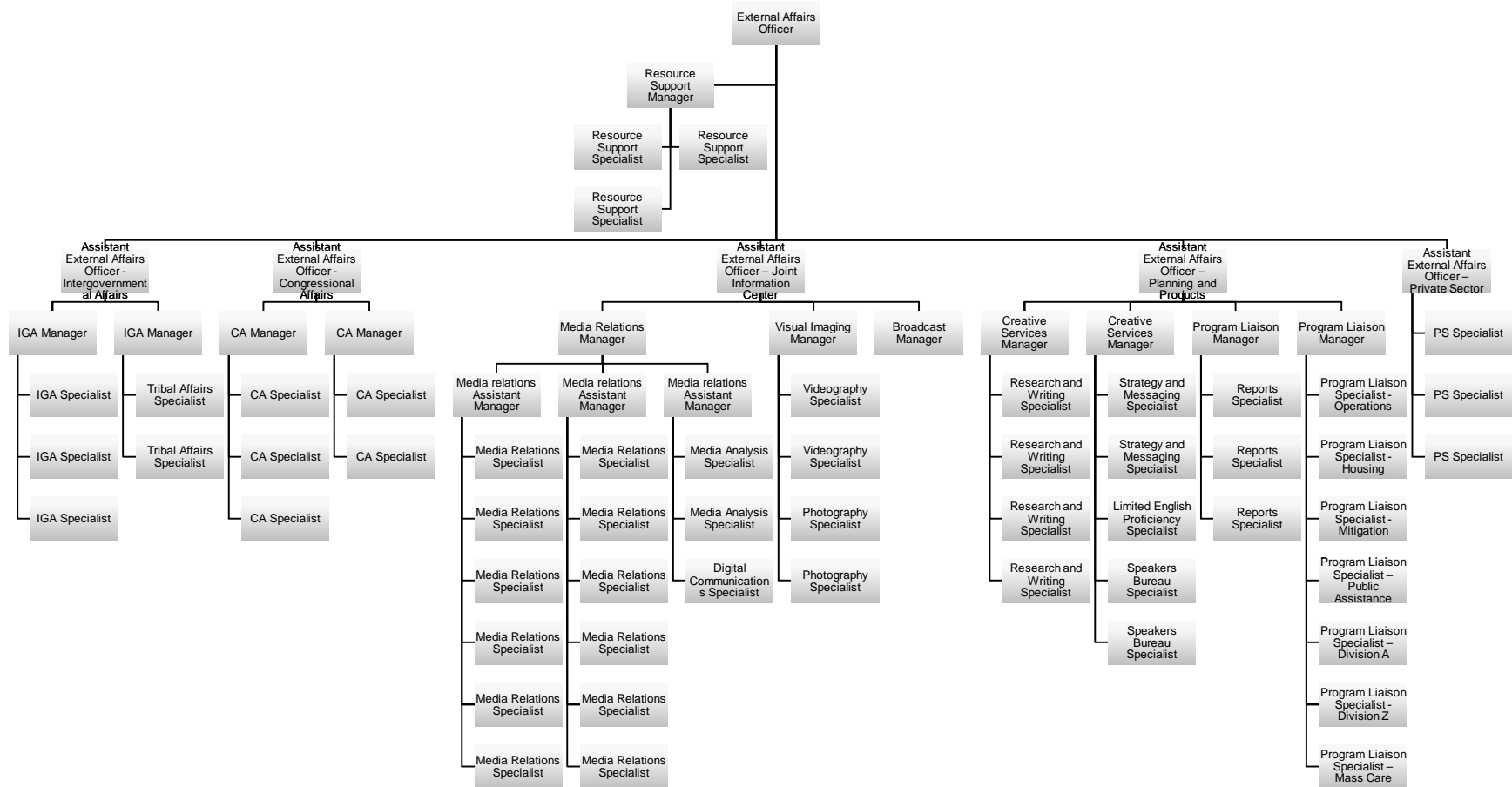
Visual 5.11

ESF #15 Planning and Products



FEMA

Possible External Affairs Structure



FEMA

Unit Summary

In this unit, we discussed:

- **Circumstances when State and Federal partners might be integrated into the JIS/JIC**
- **State JIC organizational structures and resources**
- **Federal ESF #15 organizational structures and resources**
- **Strategies for building partnerships at all levels**



FEMA

Visual 5.14

Activity: Building the JIS/JIC – Part IV

Instructions: Use the worksheet provided to assess the key relationships you have built that will lead to a strong JIS.

- Turn to **Part IV** of the worksheet
- Begin by assessing your current relationships with state and federal partners
- Identify actions you can take to enhance these relationships



FEMA

Visual 5.15