

GHC Workshop 151

HURRICANE EVACUATION CENTERS

WHERE ARE WE GOING WITH HEC'S?

Lee Mayfield

*Director, Public Safety
Lee County
Emergency Management*

Curtis Sommerhoff

*Director
Emergency Management
Florida State University*

Katie Sherk

*Regional Disaster Officer
American Red Cross
Central Florida Region*

Charles Parker

*Senior Disaster Program Manager
American Red Cross
South Florida Region*

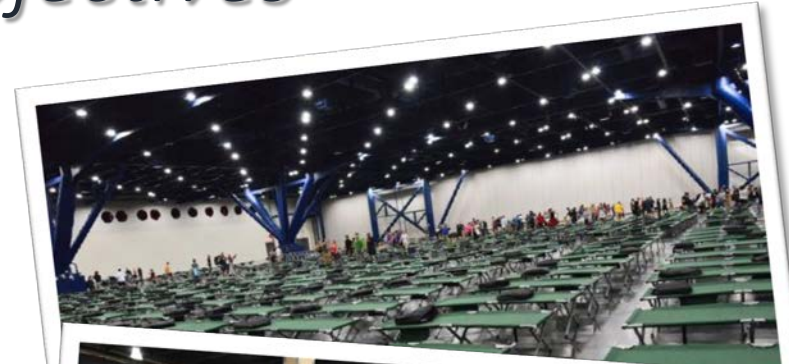
Mark E. Zaher

*Director
School Operations
Miami-Dade County Public Schools*



Workshop Objectives

- *2017 Overview*
- *Challenges*
- *Solutions*
- *Trends*





Introductions

Presenters

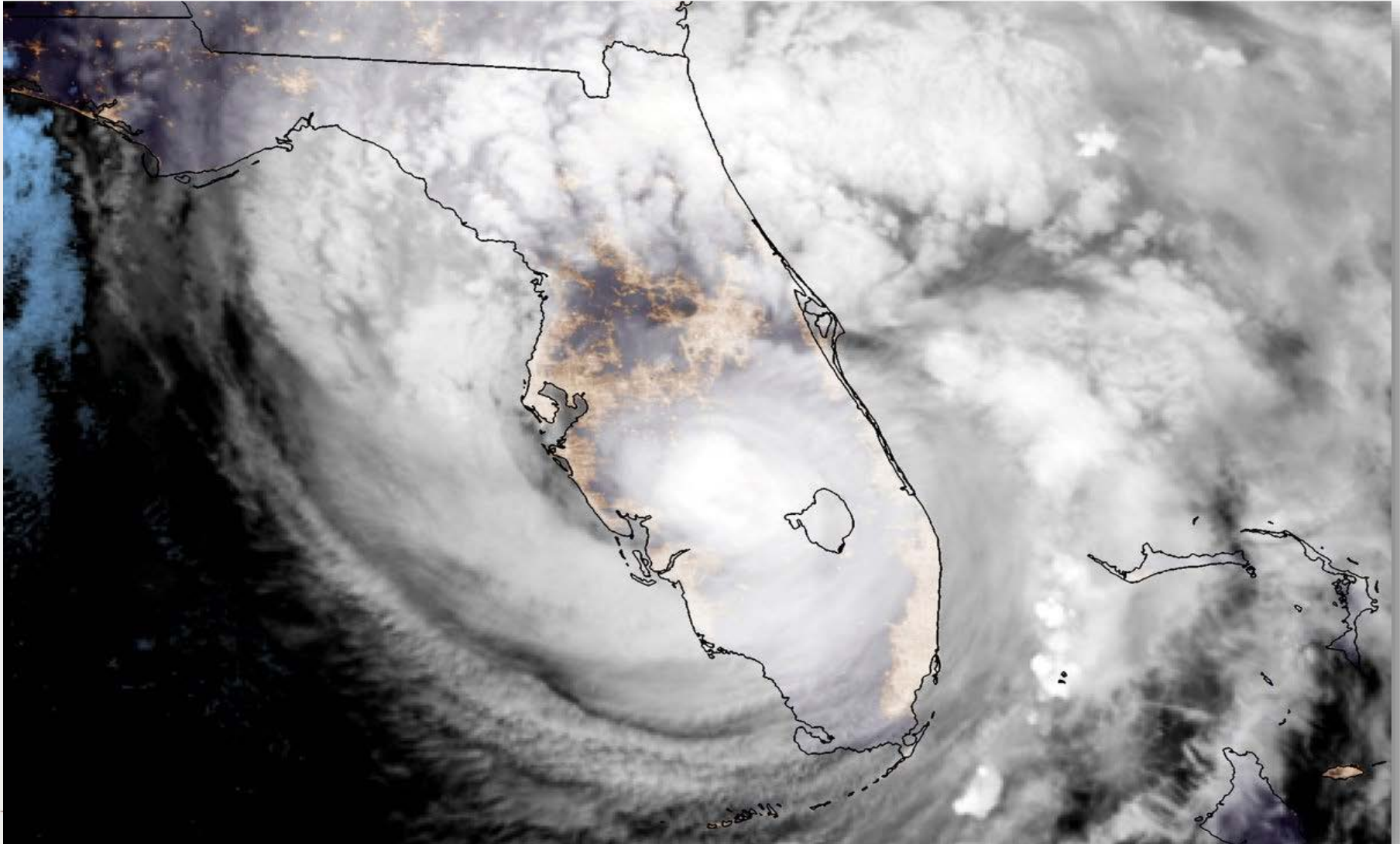
- *Curtis Sommerhoff*
- *Katie Sherk*
- *Charles Parker*
- *Lee Mayfield*
- *Mark E. Zaher*

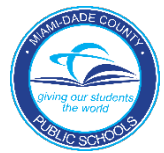
Groups Attending

- *Federal Agencies*
- *State/County Agencies*
- *Emergency Managers*
- *Community Partners/NGOs*
- *Private Sector*
- *Others*

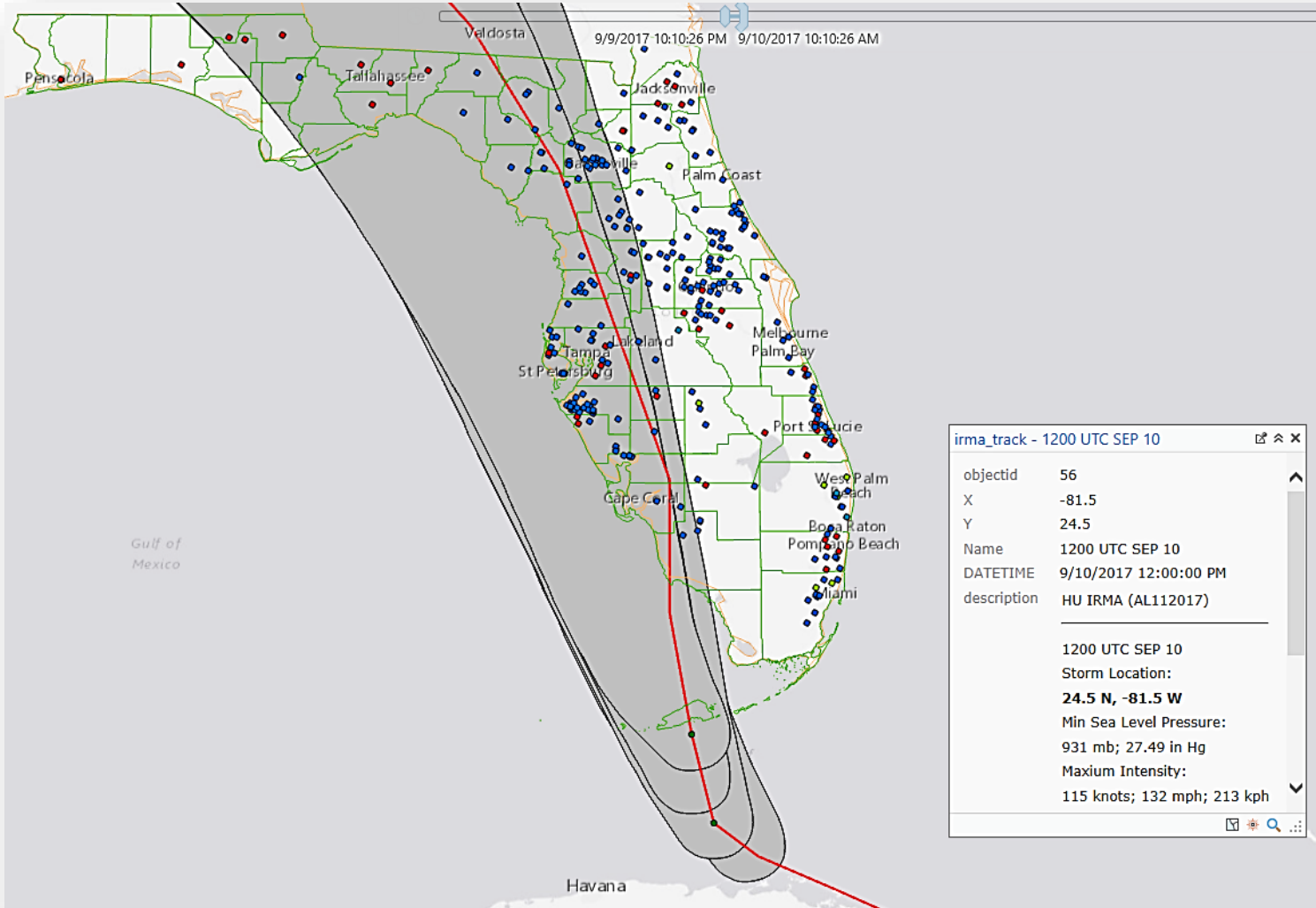


2017 – Hurricane IRMA Florida





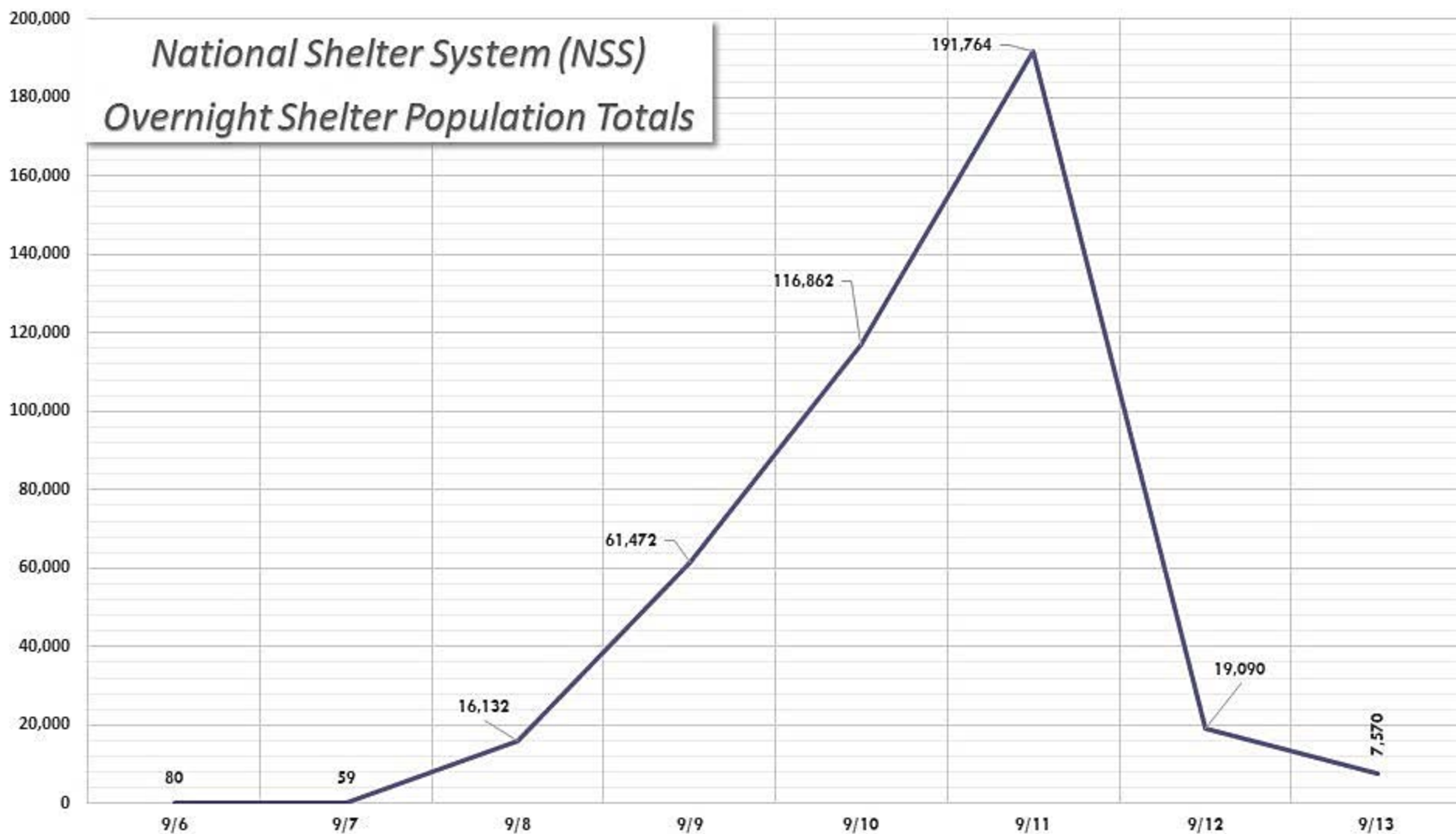
2017 – Hurricane IRMA Florida



2017 – Hurricane IRMA Florida

4

*National Shelter System (NSS)
Overnight Shelter Population Totals*





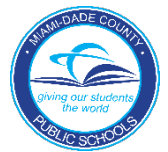
Questions...

- 1. Do you have a specific staffing model you use (rule of thumb, capacity model, etc.)?*
- 2. Do you feel your staffing model was adequate for the Irma response?*
- 3. Do you have a specific training program? Is it a written plan?*
- 4. How would you rate your training plan?*



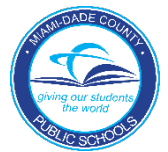
Questions...

5. *What specific sheltering challenges did you experience in Irma?*
6. *What agencies (government, NGO) participate in sheltering in your jurisdiction?*
7. *Were there any surprises in Irma?*
8. *What adjustments did you make in your sheltering program after Matthew?*
9. *What adjustments have you made in your program since Irma?*



Questions...

10. *What letter grade would you give your sheltering operation in Matthew? And Irma?*
11. *Who in the room is supplementing pay for shelter workers?*
12. *In your jurisdiction do you rely on public employees volunteering for shelter work, are they mandated by county ordinance, are they enticed through a supplemental pay program?*
13. *Is your local school board involved in sheltering? To what level?*



Questions...

14. *How did the main stream media impact your sheltering effort?*
15. *How did social media impact your sheltering effort?*
16. *Are charter schools utilized for sheltering?*
17. *What were the challenges with the shelter population?*
18. *What is your wish list look like to improve the sheltering process*



Thank You

Lee Mayfield

Director, Public Safety
Lee County
Cell: 239-476-2480
lmayfield@leegov.com

Curtis Sommerhoff

Director
Emergency Management
Florida State University
Cell: (850) 363-8659
csommerhoff@fsu.edu

Katie Sherk

Regional Disaster Officer
American Red Cross
Central Florida Region
Cell: 407-205-5398
Katie.Sherk@redcross.org

Charles Parker

Senior Disaster Program Manager
American Red Cross
South Florida Region
Cell: 863-368-2788
Charles.Parker@redcross.org

Mark E. Zaher

Director
School Operations
Miami-Dade County Public Schools
Cell: 305-805-4600
MZaher@dadeschools.net