

# Rapid Needs Assessment

## Priorities



FEMA

# Objectives

At the end of this unit participants will be able to:

- Describe the process for staffing a rapid needs assessment.
- Describe the basic tools required to support the rapid needs assessment process.



# Planning

After you have identified potential key problem areas, you must plan for an organized assessment process



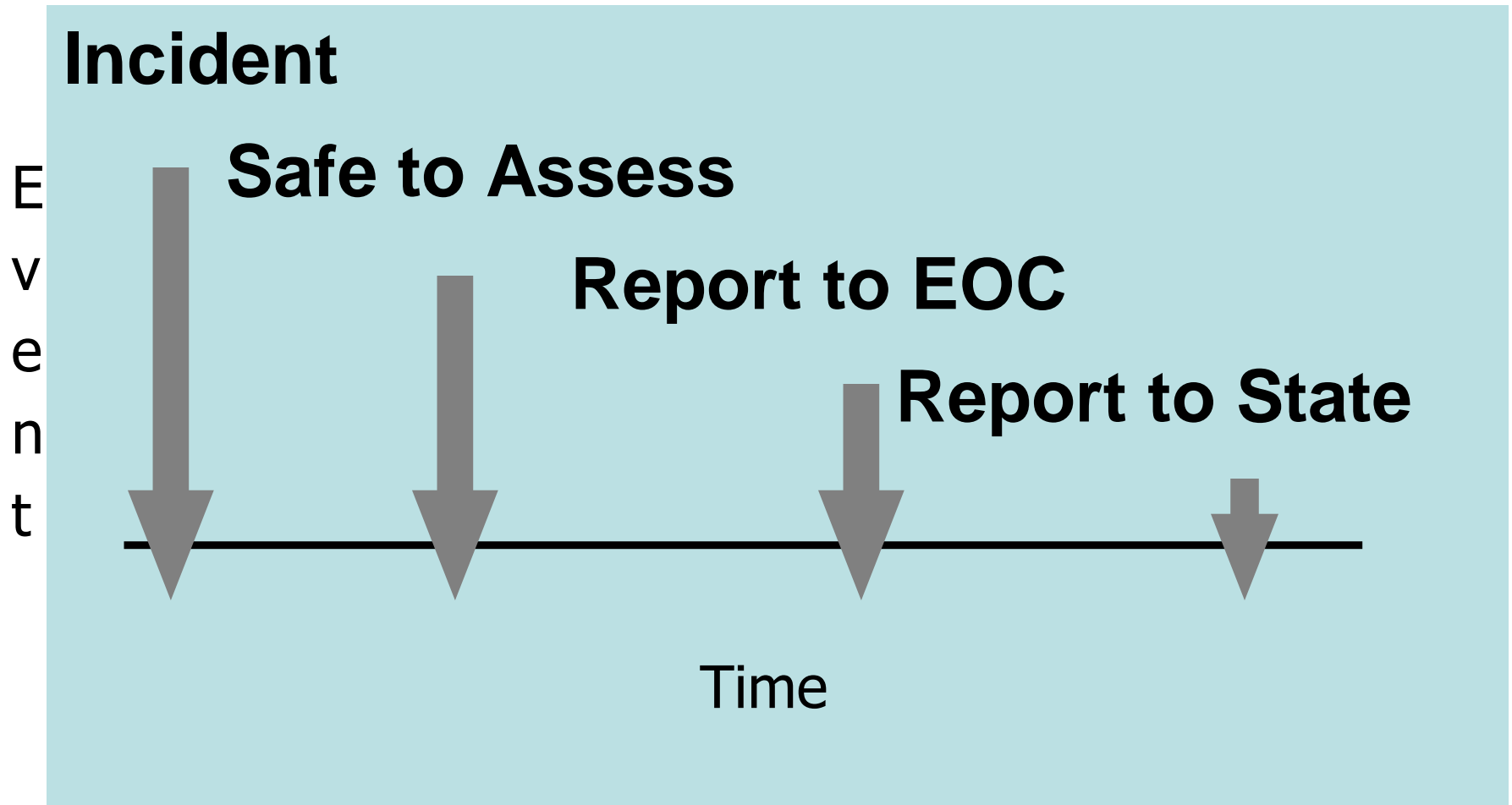
# Group Activity 2

Review the next visual:

- Based on a probable incident in your community
- Identify times from the incident to each other point on the visual



# Planning Time Line



# Group Activity 2

# Report Out

# Time!



**FEMA**

# Skills

Match the skills required to perform an assessment with the identified areas.

- Waste Water Treatment facility – public works or engineering
- Rescue – fire service, law enforcement
- Medical – public health or EMS



# Matching Skills

Who would evaluate:

- Structural issues involving bridges?
- Mass fatalities?
- Hazardous materials release?
- Communication outages?
- Debris issues?





# Group Activity 3

Who would possess the skills to evaluate:

- A. Emergency Shelters
- B. Schools
- C. Industrial Hazardous Materials Facilities
- D. Dams & Levees
- E. Healthcare Facilities
- F. Potable Water Treatment Facilities
- G. Airports



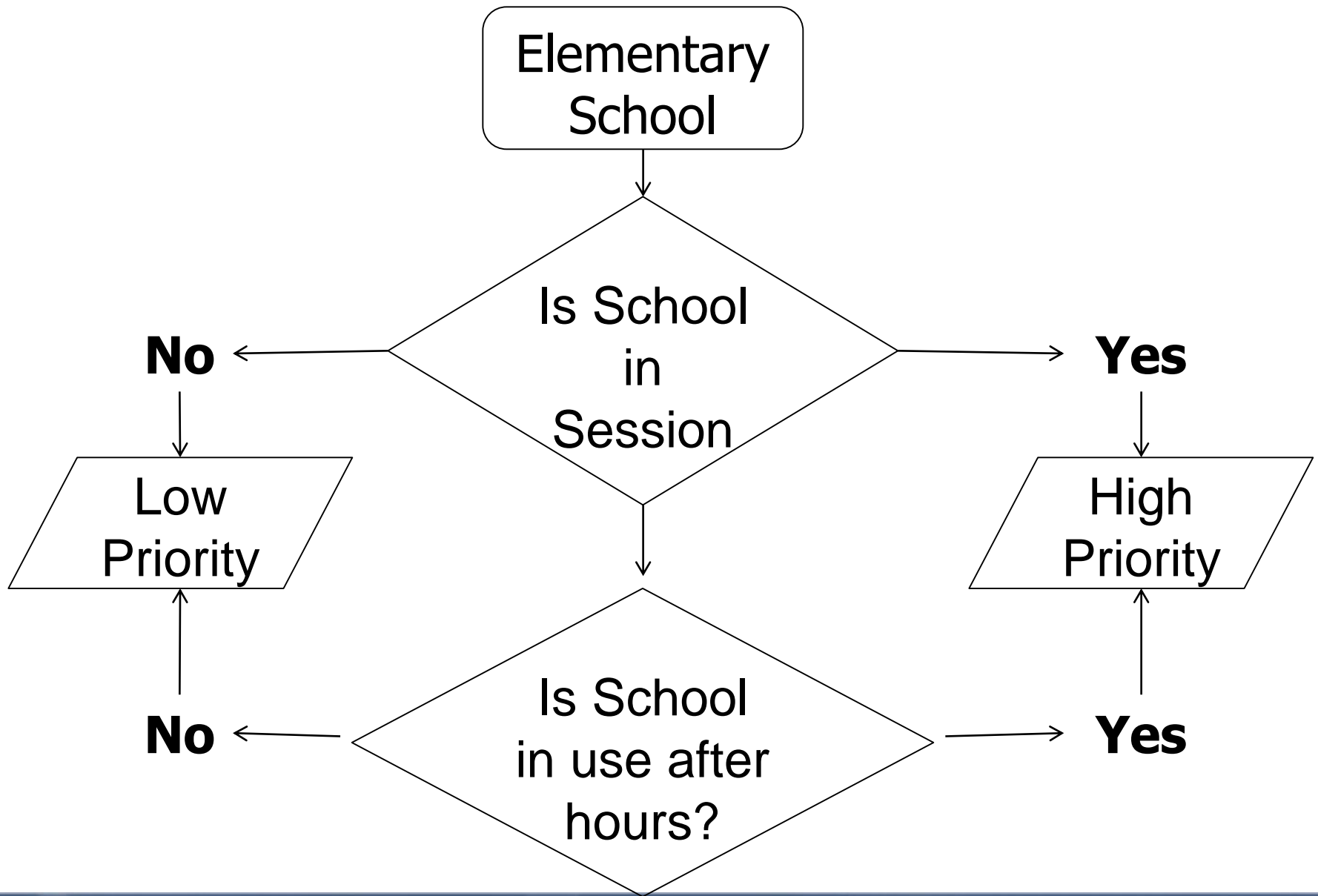
# Group Activity 3

# Report Out

# Time!



**FEMA**



# Set Overall Priorities

Which is more important?

- Hospital or medical clinic?
- Hospital or nursing home?
- Nursing home or day care center?
- Day care center or school?
- School or nursing home?
- School or hospital?



# Factors

Variables may effect prioritization:

- Time (day or night)
- Season (winter, summer, tourist)
- Special community events
- Continuing or Developing threats



# Factors

Variables may effect prioritization:

- Resources immediately available
- Importance to the community
- Political issues
- Other?



# Review

At the end of this unit participants will be able to:

- Describe the process for staffing a rapid needs assessment.
- Describe the basic tools required to prioritize the rapid needs assessment process



**And now...**

**Take a  
10 minute  
break!**



**FEMA**