

Palm Beach County Emergency Management



Jeffrey Childs

Emergency Program Coordinator - Logistics



Palm Beach County Emergency Management

EOC Fun Facts

- Built in 1999
- Palm Beach County Public Safety Department
 - Public Safety Administration
 - Division of Emergency Management
 - Division of Finance and Administration Services
- 12 inch concrete exterior walls with rebar
- Can withstand 140 mph winds
- 6,000 sq foot Operations Room
- 104 positions in the Ops Room – 350 - 400 people at one time



Palm Beach County Emergency Management

What Does DEM Do?

- Blue Skies
 - 12 Hazard specific plans
 - Update
- Training
 - Exercises
 - Classroom
 - Workshops
- Prepare
 - Equipment (18 pieces of deployable equipment)
 - Building (32,000 sq foot)

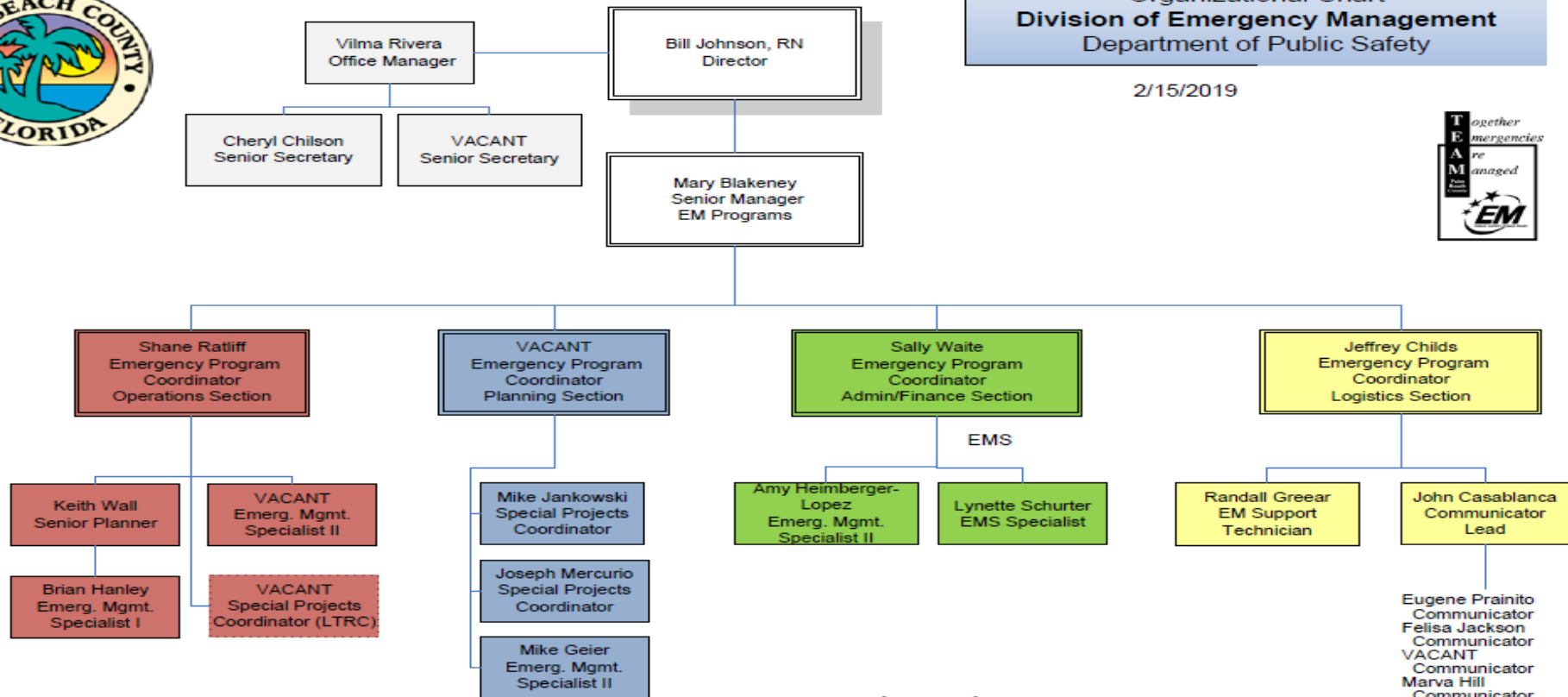


Palm Beach County Emergency Management



Organizational Chart
 Division of Emergency Management
 Department of Public Safety

2/15/2019



Legend

- Operations Section
- Planning Section
- Admin/Finance
- Logistics Section



Palm Beach County Emergency Management

What DEM Does

- **GRAY Skies**

- EOC Activation
- Public information (press conferences, social media, and Alert PBC.)
- Situation Reports
- Coordinate resource requests and allocation
- Financial records
- 12 hour shifts (Alpha and Bravo)



Palm Beach County Emergency Management



Board of County Commissioners
 PBC Constitutional Officers
 15th Judicial Circuit
 PBC School Board
 League of Cities
 Legislative Affairs
 PBC Convention Bureau
 Medical Examiner
 Military Support/FLNG

Executive Policy Group
 County Administrator – Incident Commander
 Mayor, Board of County Commissioners
 Public Safety Dept. Director
 Palm Beach County Attorney

Unified Command
 Emergency Management Director
 Palm Beach County Sheriff
 Fire Chief, Palm Beach County Fire-Rescue
 Palm Beach Co. Health Department Director

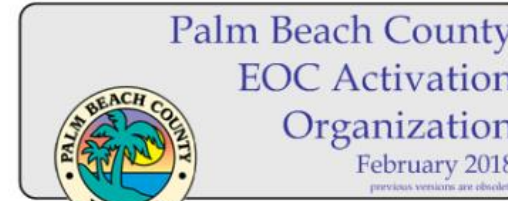
Liaison Officer
 PBC Administration

Public Information Unit (ESF #14)
 Public Affairs

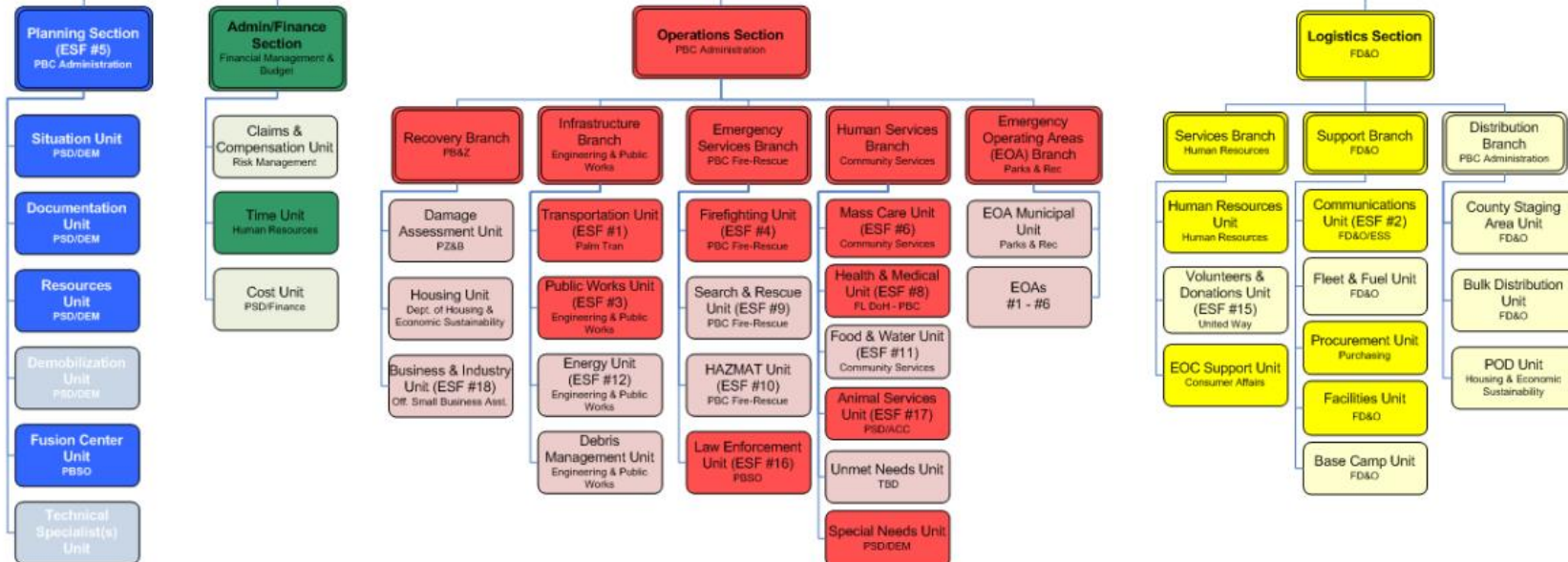
Emergency Information Unit (EIC)
 Victims & Justice Services

Safety Officer
 Risk Management

Information/Technology Support
 ISS



Level II



Palm Beach County Emergency Management

EOC Activations

- Matthew
 - 6 days of activation
 - 300 meals during Alpha shift
 - \$56,000 in feeding the EOC
- Irma
 - 16 days of activations
 - 450 meals during Alpha shift
 - \$160,000 in feeding the EOC



Palm Beach County Emergency Management

EOC Activations

- EOC Support Unit
 - Maintains EOC system operations
 - Food Unit – Public Safety Department
 - Security Unit – Palm Beach Sherriff’s Office
 - Facility Unit - Facility Development and Operation
 - Medical Unit – Palm Beach Fire Rescue



Palm Beach County Emergency Management Food Unit

- Orders food from county vendors
 - Hurricane Irma – 15 days of food costs \$160,000
 - Hurricane Matthew – 6 days of food costs \$56,000
- Takes delivery of food and set up in kitchen – buffet style
- Clears kitchen after meal is over
- Stocks soda and water
- Facilitates building maintenance



Palm Beach County Emergency Management Facilities Unit

- Facilities staff on site
 - Electrician
 - Plumber
 - HVAC technician



Palm Beach County Emergency Management Security Unit

- PBSO warrant unit
- Eight (8) deputies split between Alpha and Bravo
- Keep the peace
- Patrolling inside and outside EOC



Palm Beach County Emergency Management Medical Unit

- Palm Beach County Fire Rescue
- Staff two (2) medics 24 hours a day
- Can transport before lockdown
- Stabilizes during lockdown



Palm Beach County Emergency Management AmeriCorps Volunteers

- EOC Support Unit
 - Eight (8) current AmeriCorps volunteers
 - Four (4) on Alpha and Bravo – 12 hour shifts
 - Can go home and come back if safe outside
 - Lockdown with rest of EOC
 - Supports the EOC Support Unit
 - Downtime – shadows Section Chiefs



Palm Beach County Emergency Management

Questions?



Palm Beach County Emergency Management



Palm Beach County Emergency Management

Questions?

