



# WS-116 High Resolution Potential Storm Surge Flooding Map

Jamie Rhome - NHC Storm Surge Unit

Jessica Fieux - NWS Tallahassee

Mark Wool - NWS Tallahassee

Daniel Noah - NWS Tampa Bay Area



# Interactive Exercise

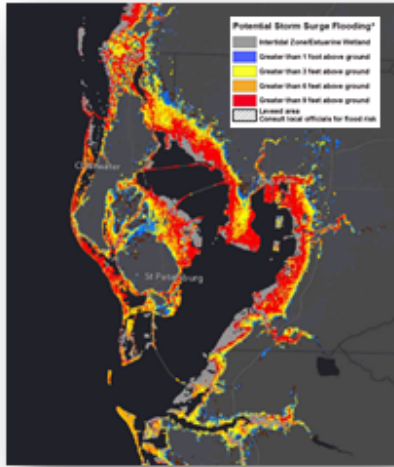
Break into 3 groups

Each group will be led by  
Mark Wool, Jessica Fieux, or Dan Noah

Each Group will interpret and message storm surge

Brief out to attendees

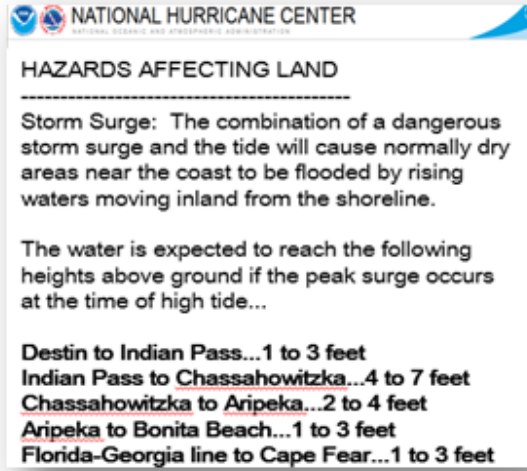
# Which Storm Surge Values Should You Use?



## Potential Storm Surge Flooding Map

Reasonable worst-case scenario at individual locations

Used for evacuation planning



**HAZARDS AFFECTING LAND**

**Storm Surge:** The combination of a dangerous storm surge and the tide will cause normally dry areas near the coast to be flooded by rising waters moving inland from the shoreline.

The water is expected to reach the following heights above ground if the peak surge occurs at the time of high tide...

**Destin to Indian Pass... 1 to 3 feet**  
**Indian Pass to Chassahowitzka... 4 to 7 feet**  
**Chassahowitzka to Aripeka... 2 to 4 feet**  
**Aripeka to Bonita Beach... 1 to 3 feet**  
**Florida-Georgia line to Cape Fear... 1 to 3 feet**

## NHC Public Advisory

Highest inundation expected over broad stretches of coast

Used by regional/national customers (e.g. FEMA, National TV News)

### \* STORM SURGE

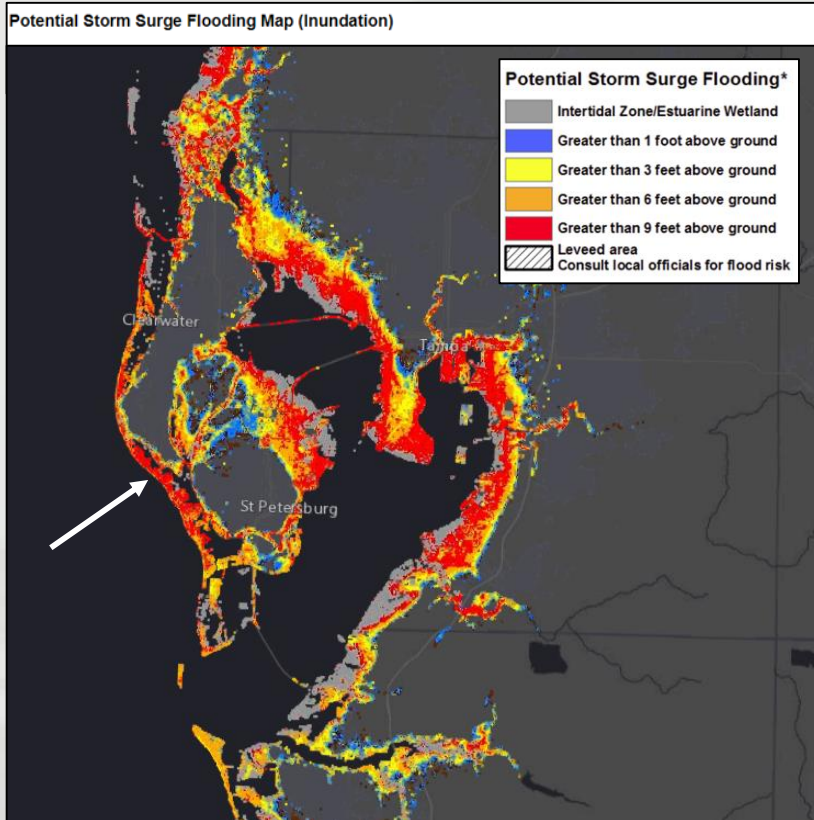
- LATEST LOCAL FORECAST: Life-threatening storm surge possible
- Peak Storm Surge Inundation: The potential for 4-7 feet above ground somewhere within surge prone areas
- Window of concern: Begins early this afternoon

## Local Watch/Warning Product (TCV)

Starts out as reasonable worst-case scenario when storm far from land then trends toward expected values as storm approaches land and confidence increases

Use this product

# How would you explain this map to a Commissioner?

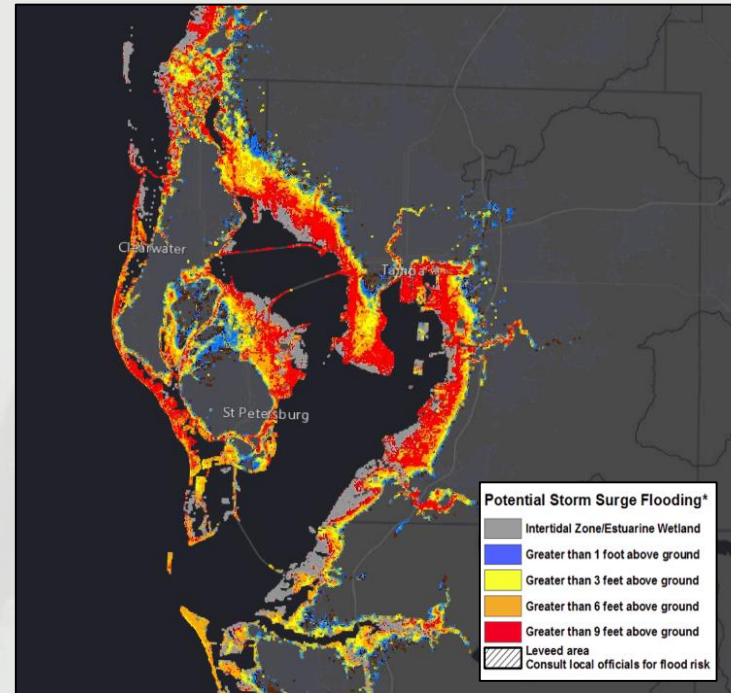
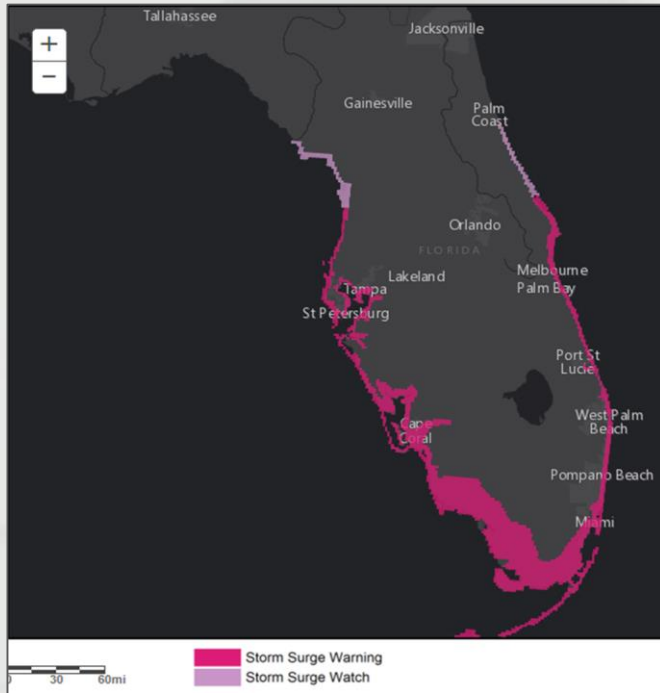


The Commissioner is asking how high the surge will be on the barrier islands and they saw this map on TV

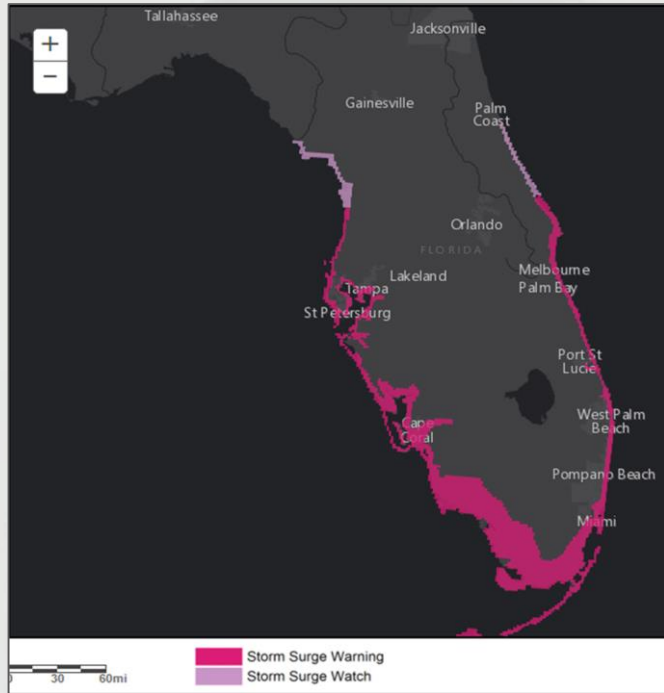
The surge will move into an area somewhere along the west coast of Florida tomorrow afternoon



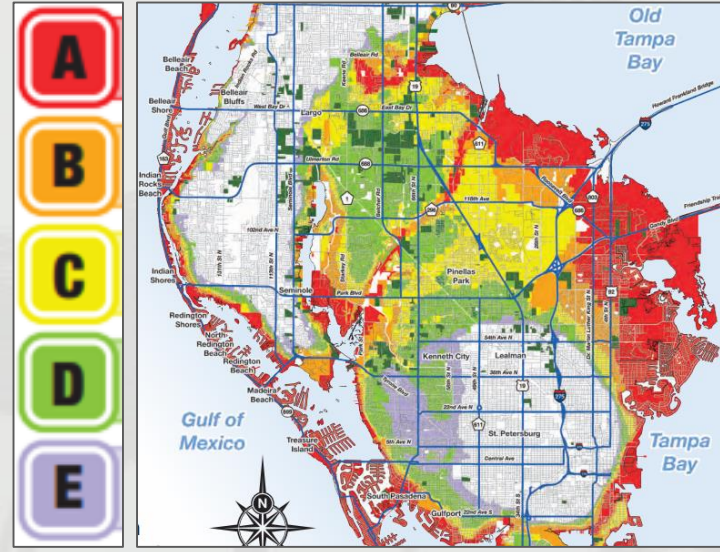
# Which map would you use to explain storm surge to the public? What would you say when they ask about surge?



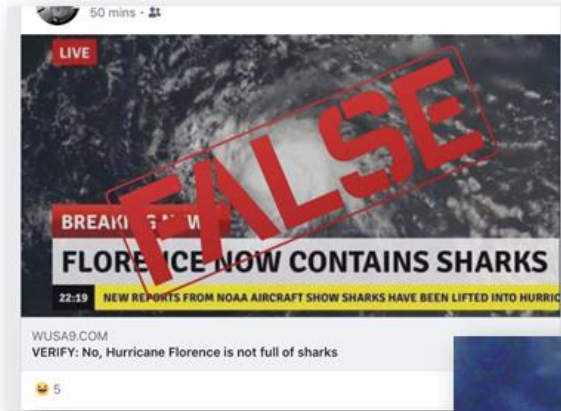
# A TV station is interviewing you about storm surge. Develop a short sound bite.



Evacuation orders in effect for Zones A through D



# How to Deal With Fake Social Media Posts



←

Not during Florence,  
in Tampa Bay years  
ago



# A Source of Local Surge Information



On your local NWS webpage during tropical events

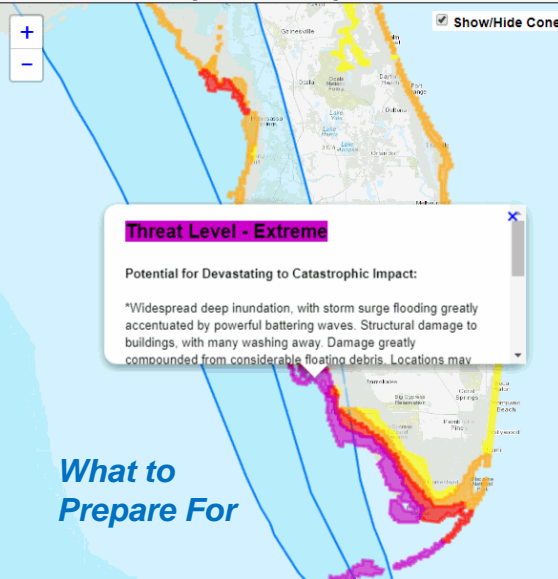
NWS Tampa Bay homepage

Outlook Active Storms **Threats and Impacts** Local Products Satellite Radar Preparedness Miscellaneous

Map of Coastal Threats and Potential Impacts - What's This? Latest Forecast - What's This?

Wind Threat  Storm Surge Threat  Flooding Rain Threat  Tornado Threat

Show/Hide Cone



**Threat Level - Extreme**

Potential for Devastating to Catastrophic Impact:

"Widespread deep inundation, with storm surge flooding greatly accentuated by powerful battering waves. Structural damage to buildings, with many washing away. Damage greatly compounded from considerable floating debris. Locations may

**For: Coastal Lee County**

...HURRICANE WARNING REMAINS IN EFFECT...  
...STORM SURGE WARNING REMAINS IN EFFECT...

\* LOCATIONS AFFECTED  
- Cape Coral  
- Captiva  
- Sanibel

\* STORM SURGE  
- LATEST LOCAL FORECAST:  
Life-threatening and historic storm surge possible  
- Peak Storm Surge Inundation:  
The potential for 10-14 feet above ground somewhere within surge prone areas  
- Window of concern: through early Monday evening

- EMERGENCY PLANS SHOULD INCLUDE A REASONABLE THREAT AS DEPICTED ON THE LEFT.

\* FOR MORE INFORMATION:  
- <http://www.weather.gov/tbw>

**What to Prepare For**

**Forecast & Timing for where you click**

[Download KML] [Download Image]

[weather.gov/mobile](http://weather.gov/mobile)

[weather.gov/tallahassee](http://weather.gov/tallahassee)

[weather.gov/jacksonville](http://weather.gov/jacksonville)

[weather.gov/tampa](http://weather.gov/tampa)

[weather.gov/melbourne](http://weather.gov/melbourne)

[weather.gov/miami](http://weather.gov/miami)

[weather.gov/keywest](http://weather.gov/keywest)