

GOVERNOR'S HURRICANE CONFERENCE[®]

MAY 7-12, 2023

PALM BEACH COUNTY CONVENTION CENTER
HILTON WEST PALM BEACH

PARTNERING FOR SUCCESS



Florida Division of
Emergency Management

American
Red Cross

National Weather
Service

Florida Emergency
Preparedness Association

P.O. Box 279, Tarpon Springs, FL 34688-0279 ♦ Phone (727) 944-2724 ♦ Fax (727) 944-2687
E-mail: rene@flghc.org



CrowderGulf...Standing the Test of Time

We have sincerely appreciated the opportunity to assist in your recovery needs and we stand ready to serve.



Thank you for the decades of continued trust.

Governor's Hurricane Conference®

In-Kind Donors



The Governor's Hurricane Conference® relies heavily on the assistance of volunteers to prepare for and execute the conference. The four sponsoring agencies (Florida Division of Emergency Management, American Red Cross, Florida Emergency Preparedness Association and the National Weather Service) dedicate extensive human and other resources to all aspects of the conference. Additionally, other agencies and organizations provide staff and services that help make the conference a success. It is with sincere appreciation that we recognize those agencies.



Governor's Hurricane Conference®

Conference Underwriters



FLORIDA
HEALTH
CARE
COALITIONS
www.FloridaHCC.org



As a not-for-profit corporation, the Governor's Hurricane Conference® strives to maintain reasonable registration fees that afford the maximum participation of all organizations, large and small. With that philosophy, it would not be possible for the GHC to provide all of the amenities that attendees enjoy, without assistance. Therefore, we seek financial contributions from the business community in order to provide refreshment breaks and other items and events.

This year's Underwriters deserve a very sincere "Thank You" from all of us for making the Governor's Hurricane Conference® not only a great learning experience, but an enjoyable experience, as well. As you see representatives of our Underwriters this week, please convey your appreciation for their help.



Governor's Hurricane Conference®

Student Program



The GHC Student Program is in its 14th year and continues to empower the next generation of emergency management professionals through education, networking, and mentorship. We could not do it without the generous contributions of our sponsors. Thank you for your continued support!

Follow us on Twitter

@FLGHC_Students

and like us on Facebook

(www.facebook.com/FLGHCSStudents/)

to see what our current and former students are up to. For any questions, or for information on how to become a sponsor for next year's program, email us at GHCStudentProgram@gmail.com.

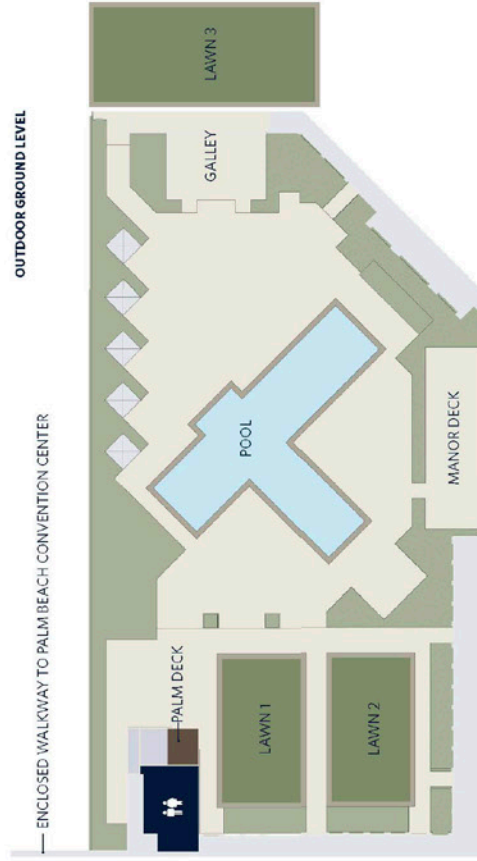


Member of the SNC-Lavalin Group

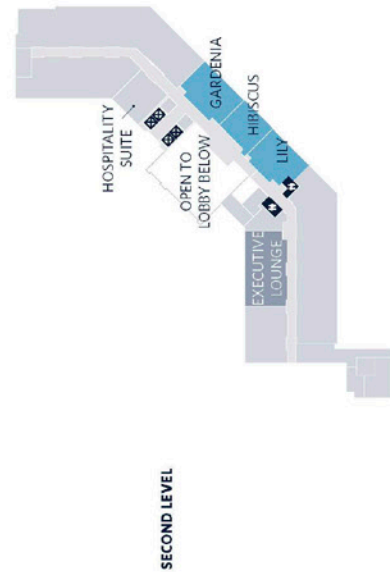
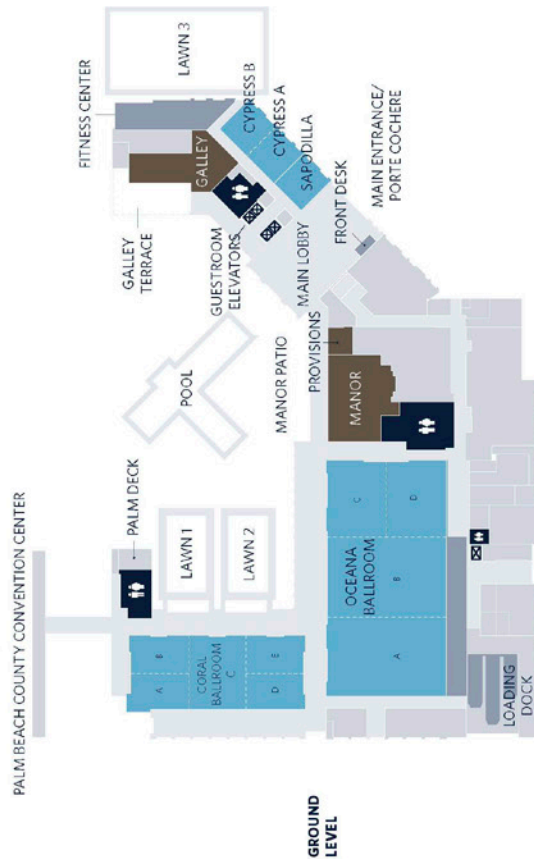


HILTON WEST PALM BEACH FLOOR PLAN

HOTEL LAYOUT
HILTON WEST PALM BEACH



HOTEL LAYOUT
HILTON WEST PALM BEACH



Contents

Agenda of Activities	2
Awards Luncheon.....	5
Exhibit Hall Map.....	6
Exhibitors.....	7
Floor Plan Hilton WPB.....	iv
Floor Plan PBCCC.....	38
Future Conference Dates	v
General Session	4
Hotels	1
In-Kind Donors.....	i
Mobile App.....	3
Registration Policies	1
Student Program	iii
Theme	vi
Training Session Descriptions	10
Training Session Matrix	18
Underwriters	ii
Workshop Descriptions.....	23
Workshop Matrix.....	19



Future dates for the Governor's Hurricane Conference® are:

May 12 – 17, 2024

May 11 – 16, 2025

May 10 – 15, 2026

Palm Beach County Convention Center / Hilton West Palm Beach



GOVERNOR'S HURRICANE CONFERENCE®

MAY 7-12, 2023

**PALM BEACH COUNTY CONVENTION CENTER
HILTON WEST PALM BEACH**

Partnering for Success

Contrary to the proverb about the month of March, the 2022 hurricane season came in like a lamb and went out like a lion. Despite the statistics, with two landfalling hurricanes along the Florida peninsula, it was anything but a “normal” season. The long road to recovery continues throughout Florida, where Hurricane Ian made landfall as a top-end Category 4 hurricane with a catastrophic 10 to 15-foot storm surge. Ian is the deadliest hurricane to strike the U.S. mainland in almost two decades and one of the costliest hurricanes on record. And despite its modest strength, the breadth of Hurricane Nicole’s winds acted like a powerful Florida nor’easter, chewing up large stretches of Atlantic beaches in mid-November; the latest hurricane to strike the Florida peninsula since records began in 1851.

Our ability to plan, to collaborate, to deploy, and to assist others in need, showed our mettle in overcoming these extraordinary challenges. This past season exemplified the way we do business in Florida – through collaboration, coordination, flexibility, forging partnerships pre-event, and trusting them in the heat of response, and serving those in need. The events of this season have tested us yet again, and made us stronger, more resilient, and better prepared for future events. Our theme for this 37th edition of the Governor’s Hurricane Conference® – Partnering for Success – will present lessons learned and best management practices from the 2022 hurricane season experience and focus on how we successfully tapped into our affiliate resources, both capital and human, to innovatively and successfully solve the myriad of challenges presented by major tropical cyclones.

As we continue to build strong connections with our colleagues, we continue to train and educate Florida’s emergency response community through the Governor’s Hurricane Conference®. This year, our sponsoring organizations and partners have mapped out 35 training sessions, 59 workshops and a dynamic general session to share lessons learned during this historic hurricane season. We also offer the opportunity to network with peers to enhance your learning experience and develop cohesive partnerships across the State and our emergency management community. Come join us as we recognize the impact of the storms of the past year and appreciate the resilience and strength of our community as we continue partnering for success in Florida and across the nation.

#GHCsuccess

#GHC2023

CONFERENCE HOTELS

Hilton WPB

600 Okeechobee Blvd.
West Palm Beach, FL 33401
Phone: (561) 231-6000

Marriott

1001 Okeechobee Blvd.
West Palm Beach, FL 33401
Phone: (561) 833-1234

Hyatt Place

295 Lakeview Ave.
West Palm Beach, FL 33401
Phone: (561) 655-1454

Hilton Airport

150 Australian Ave.
West Palm Beach, FL 33406
Phone: (561) 684-9400

Canopy by Hilton

380 Trinity Place
West Palm Beach, FL 33401
Phone: (561) 655-0404

IMPORTANT REGISTRATION POLICIES

- Name badges are color-coded based on the registration fee paid.
Attendees will be required to wear their name badges at all conference functions.

Blue: Fully registered for all training sessions and conference activities, including the Awards Luncheon. (Sunday - Friday)

Purple: Fully registered for all training session activities (Sunday - Wednesday)

Red: Fully registered for all conference activities, including the Awards Luncheon. (Wednesday - Friday)

Black: Not registered, presenter only for presentations or conference support.

- Registration may not be “shared.” Authorization for substitution of pre-registered attendees must be presented in writing.

37th Governor's Hurricane Conference®

Agenda of Activities

Palm Beach County Convention Center / Hilton West Palm Beach

Sunday, May 7

10:00 a.m. – 5:00 p.m.	Registration Opens.....	PBCCC, Level 1
12:00 p.m. – 5:00 p.m.	Social Media Lounge.....	PBCCC, Level 1
1:30 p.m. – 5:00 p.m.	Training Sessions.....	PBCCC, Level 1 & 2
3:00 p.m. – 3:30 p.m.	Break.....	PBCCC, Level 1

Monday, May 8

7:30 a.m. – 5:00 p.m.	Registration Opens.....	PBCCC, Level 1
8:00 a.m. – 8:30 a.m.	Morning Beverages.....	PBCCC, Level 1
8:00 a.m. – 5:00 p.m.	Social Media Lounge.....	PBCCC, Level 1
8:00 a.m. – 5:00 p.m.	FDEM Applicant Q&A.....	Hilton, Gardenia
8:30 a.m. – 5:00 p.m.	Training Sessions.....	Hilton & PBCCC
8:30 a.m. – 5:00 p.m.	Media Room.....	PBCCC, Room 1J/K
10:00 a.m. – 10:30 a.m.	Break.....	PBCCC Level 1
12:00 p.m. – 1:30 p.m.	Lunch.....	(on your own)
3:00 p.m. – 3:30 p.m.	Break.....	PBCCC Level 1

Tuesday, May 9

8:00 a.m. – 5:00 p.m.	Registration Opens.....	PBCCC, Level 1
8:00 a.m. – 8:30 a.m.	Morning Beverages.....	PBCCC, Level 1
8:00 a.m. – 5:00 p.m.	Social Media Lounge.....	PBCCC, Level 1
8:00 a.m. – 5:00 p.m.	FDEM Applicant Q&A.....	Hilton, Gardenia
8:30 a.m. – 5:00 p.m.	Training Sessions.....	Hilton & PBCCC
8:30 a.m. – 5:00 p.m.	Media Room.....	PBCCC, Room 1J/K
10:00 a.m. – 10:30 a.m.	Break.....	PBCCC Level 1
12:00 p.m. – 1:30 p.m.	Lunch.....	(on your own)
3:00 p.m. – 3:30 p.m.	Break.....	PBCCC Level 1

Wednesday, May 10

8:00 a.m. – 5:00 p.m.	Registration Opens.....	PBCCC, Level 1
8:00 a.m. – 8:30 a.m.	Morning Beverages.....	PBCCC, Level 1
8:00 a.m. – 5:00 p.m.	Social Media Lounge.....	PBCCC, Level 1
8:00 a.m. – 5:00 p.m.	FDEM Applicant Q&A.....	Hilton, Gardenia
8:30 a.m. – 5:00 p.m.	Media Room.....	PBCCC, Room 1J/K
8:45 a.m. – 11:00 a.m.	General Session.....	PBCCC, Level 2, Grand Ballroom
11:00 a.m. – 6:00 p.m.	Exhibits.....	PBCCC, Level 1, Exhibit Hall
11:30 a.m. – 1:00 p.m.	FEPA Board of Directors Meeting.....	Hilton, Cypress A&B
12:00 p.m. – 1:30 p.m.	Complimentary Lunch in Exhibit Hall.....	PBCCC, Level 1, Exhibit Hall

1:30 p.m. – 5:00 p.m.	Training Sessions	Hilton & PBCCC
3:00 p.m. – 3:30 p.m.	Break in Exhibit Hall-Sponsored by SDR	PBCCC, Level 1, Exhibit Hall
5:00 p.m. – 6:00 p.m.	Reception in Exhibit Hall.....	PBCCC, Level 1, Exhibit Hall
6:15 p.m. – 7:30 p.m.	American Red Cross Meeting.....	Hilton, Coral D

Thursday, May 11

8:00 a.m. – 5:00 p.m.	Registration Opens.....	PBCCC, Level 1
8:00 a.m. – 8:30 a.m.	Morning Beverages in Exhibit Hall - Sponsored by Garner	PBCCC, Level 1, Exhibit Hall
8:00 a.m. – 5:00 p.m.	Social Media Lounge	PBCCC, Level 1
8:00 a.m. – 5:00 p.m.	FDEM Applicant Q&A	Hilton, Gardenia
8:00 a.m. – 12:00 p.m.	Exhibits.....	PBCCC, Level 1, Exhibit Hall
8:30 a.m. – 10:00 a.m.	Workshops.....	Hilton & PBCCC
8:30 a.m. – 5:00 p.m.	Media Room	PBCCC, Level 1, Room 1J/K
10:00 a.m. – 11:45 a.m.	Break & Dedicated Exhibit Time-Sponsored by Granny's Alliance.....	PBCCC, Level 1 Exhibit Hall
11:45 a.m. – 1:30 p.m.	Awards Luncheon.....	PBCCC, Level 2, Grand Ballroom
1:30 p.m. – 5:00 p.m.	Workshops.....	Hilton & PBCCC
3:00 p.m. – 3:30 p.m.	Break	PBCCC, Level 1
5:30 p.m. – 7:00 p.m.	Florida VOAD Meeting.....	Hilton, Coral D/E

Friday, May 12

8:00 a.m. – 8:30 a.m.	Morning Beverages	PBCCC, Level 1
8:00 a.m. – 5:00 p.m.	FDEM Applicant Q&A	Hilton, Gardenia
8:30 a.m. – 12:00 p.m.	Workshops.....	Hilton & PBCCC
8:30 a.m. – 12:30 p.m.	Media Room	PBCCC, Level 1, Room 1J/K
10:00 a.m. – 10:30 a.m.	Break	PBCCC, Level 1

MOBILE APP

The session and presenter evaluations can now be completed directly through the mobile app.

It is important to get your feedback on all sessions and speakers in order for the GHC
to make improvements and offer a top rate attendee experience.

We encourage you to download the app to become familiar with all events offered at this year's conference.

Search GHC2023 in the App Store or in Google Play.

Or use the QR Code for the online version of the app.



37th Annual Governor's Hurricane Conference

General Session
Wednesday, May 10, 2023
Palm Beach County Convention Center
Grand Ballroom
8:45 a.m. – 11:00 a.m.

Moderator
Bill Johnson, RN
Public Health Advisor, U.S. Dept. of Health & Human Services
Florida Emergency Preparedness Association

Honor Guard/ Pledge of Allegiance
Palm Beach County Fire Rescue

National Anthem
Alexander Drefoos School of the Arts

GHC President's Welcome
Paul Womble
Director
Polk County Emergency Management

Welcome
Gregg Weiss
Mayor
Palm Beach County

Governor Ron DeSantis *(invited)*
State of Florida

Jamie Rhome
Acting Director
National Hurricane Center

Keynote Speakers - Panel Discussion
Kevin Guthrie, Director, Florida Division of Emergency Management
Gracia Szczech, Regional Administrator–Region 4, FEMA
Sandra Tapfumaneyi, Director, Lee County Emergency Management
Brock Long, Executive Chairman, Hagerty Consulting

37th Annual Governor's Hurricane Conference

Awards Luncheon
Palm Beach County Convention Center
Grand Ballroom
Thursday, May 11, 2023
11:45 a.m. - 1:30 p.m.

Lunch

Memorial Honors

Awards Presentations
Governor's Hurricane Conference®
Members of the Board of Directors

GOVERNOR'S HURRICANE CONFERENCE®

PO Box 279
Tarpon Springs, Florida 34688-0279
Phone: (727) 944-2724
Fax: (727) 944-2687
Email: rene@flghc.org
Website: www.flghc.org

PROVIDING YOUR LINEN SOLUTIONS

Call or Email: CHRIS VITALE
856.676.9320
cvitale@1-gss.com



GLOBAL
SOURCING SOLUTIONS



gsstextiles.com

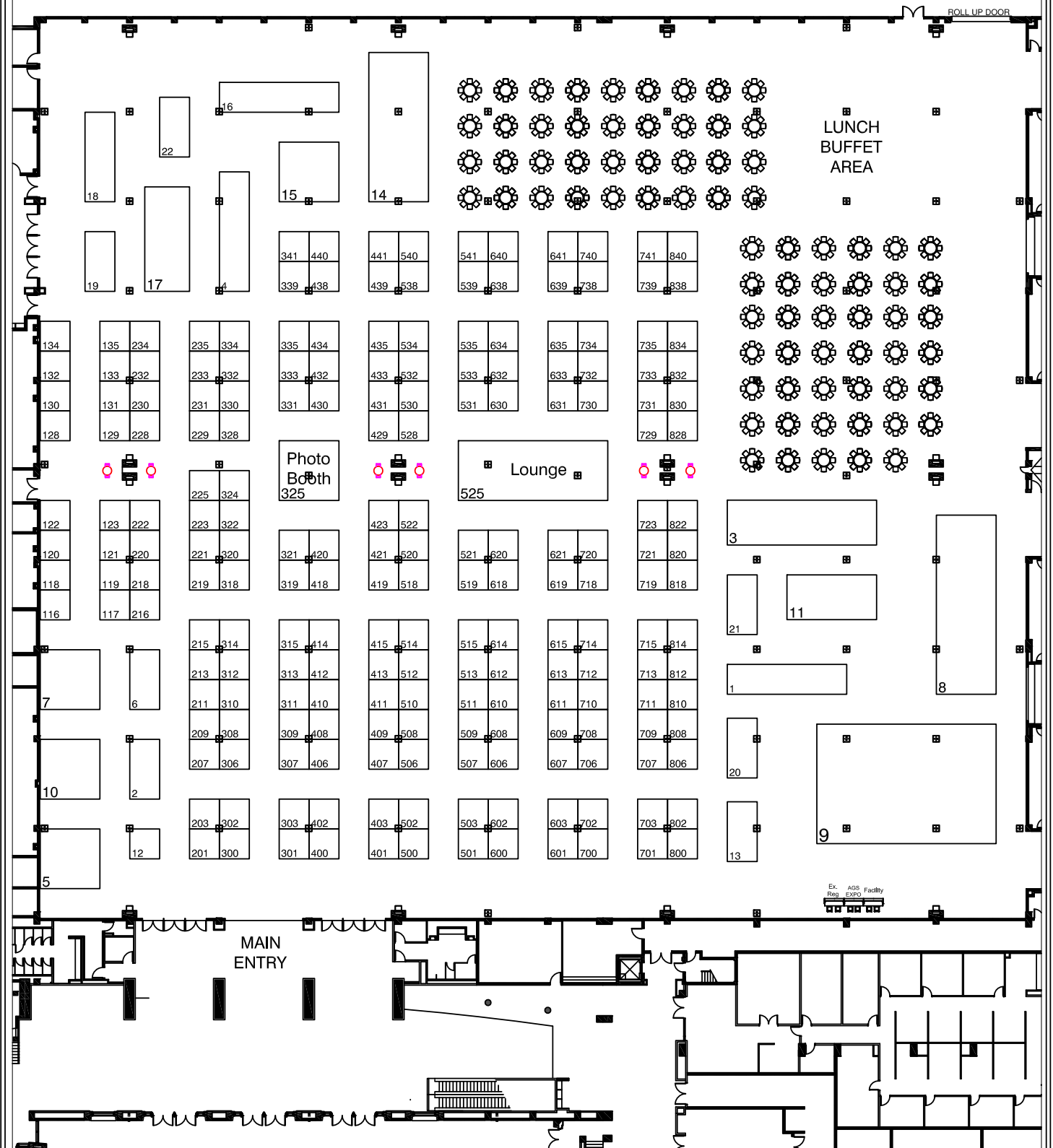


Joni Ryan

DEPOT MANAGER - FLORIDA REGION

863.667.0101
Joni.Ryan2@Carrier.com
Carrier.com/Rentals

EXHIBIT HALL MAP



SHOW NAME: Governors Hurricane Conference

SHOW FACILITY: Palm Beach County Convention Center

SHOW DATE: May 8-11, 2023

REVISED:

JC
04/04/23

SCALE: N.T.S

Inventory as of 04/04/2023

Dimension	Qty
10x10'	203
10x20'	7
10x30'	1
10x40'	3
15x20'	1
15x30'	1
15x40'	1
20x20'	5
20x30'	2
20x40'	1
40x60'	1

Totals: 226

© COPYRIGHT - This design is exclusive property of AGS-Exposition Services, Inc. and should not be reproduced without written consent and/or permission.

37th Annual Governor's Hurricane Conference®

EXHIBITORS

as of 3/31/23

<u>Company</u>	<u>Booth</u>	<u>Company</u>	<u>Booth</u>
3AM Innovations.....	135	Emergency Management Programs, School of Public Administration, University of Central Florida	520
AC Disaster Consulting LLC.....	729	Emergency Relief Catering Company	330
Advanced Roofing, Inc	528	Ernst & Young.....	129
Agency for Health Care Administration (AHCA)	220	EVI - Emergency Vehicles, Inc	Veh 3
Airstar America, Inc.	13	Exeter Architectural Products	519
All Traffic Solutions	418	FDOT / FL511	521
American Mobile Battery Renewable Equipment	Veh 7	Federal Contracts Corp	438
APTIM.....	234	First Priority Restoration	540
AQI Services.....	321	Flood Risk America.....	620
ARS Global Emergency Management.....	638	Floodproofing.com.....	222
AshBritt, Inc.	800	Florida Independent Living Council	512
ATI Electrical Supply.....	615	Florida International University	510
ATL Disaster Recovery	334	Florida Power & Light	221
Beachview Logistics US, Inc	715	Florida Public Utilities	534
Bed-Evac, LLC	735	FM Approvals.....	341
Blue Can Company	838	FoxFury Lighting Solutions	21
BOLDplanning	131	GardaWorld Federal Services	209
Brief Relief	832	Garner	419
Byer of Maine	538	Genasys, Inc.....	412
Carrier Rental Systems	714	General Services Administration Federal Acquisition Service	506
Ceres Environmental	400	Geodesign Barriers.....	233
Chef Minute Meals.....	618	Global Sourcing Solutions	320
Connecta Satellite Solutions.....	133 Veh 19	GOC	128
Cotton Logistics	711	Grainger.....	539
Crowder Gulf	432	Granny's Alliance Holdings, INC.....	413
CTC Disaster Response.....	511	GrantWorks, Inc.....	818
Cyber Florida	130	Ground Control Inc	739
Cybersecurity and Infrastructure Security Agency.....	741	Guardian Fueling Technologies	120
D&J Enterprises, Inc.....	319	Guardian Grant Advisors	732
D.H. Griffin Companies.....	429	Guest Communications Corporation (GCC)	314
Davis Water Service	423	Hart Industries Inc.	709
Deaf Link	232	Heavy Machines, LLC	733
DebrisTech.....	306	Horizon Signal	15
Deloitte & Touche LLP	631	Hull's Environmental Services	703
Department of Business & Professional Regulation...	211	IAEM.....	712
Deployed Resources, LLC.....	406	IEM	634
Disaster Program & Operations, Inc.....	738	Infinity Communications LLC.....	541
DMG	640	Innovare Products, Inc.....	635
Doodie Calls	225	Integrated Solutions Consulting.....	420
Dr. Shrink, Inc.	701	Integrity Medical Solutions.....	812
DRC Emergency Services	201	Jaguar Fueling Services	633
DSW Homes, LLC	602	Jogan Health	734
Duncan-Parnell Inc.....	132		
Early Alert, Inc.	215		

Company	Booth
JR Evans Engineering	535
Juvarre	834
Kelly & Company 1st Responders LLC	Veh 8
KPMG	600
Krucial Rapid Response	403
LDV, Inc.	Veh 1
Legal Services of North Florida, Inc.	Veh 16
Lipsey Logistics	513
Lodging Solutions and Industrial Tent Systems.....	Veh 14
Looks Great Services	408
Luxfer Magtech	533
Macro Companies Inc.....	307
Merit.....	608
Mersino	601
Metric Consulting, LLC	315
Midland Radio Corporation.....	407
Military Battery Systems	723
MLU Services	331 Veh 4
Mobile Concepts Specialty Vehicles	840
Morbark, LLC	619
MRE STAR	609
MTD USA LLC	828
MWI Pumps	802
Neighbors by Ring	508
New Use Energy Solutions, Inc	339
Nite Beam Products.....	219
North Highland.....	439
Nova Southeastern University	410
OnSolve.....	641
Operation BBQ Relief	213
Panasonic Connect	441
Pantropic Power Inc.	121
Patriot Response Group	502
Pelsue Company	514
Persons Services Corp.....	718
Phillips & Jordan	308
Plum Laboratories	207
PODS	324
PortaMaxPower, LLC.....	806
Precise Kit Promotions Inc	117
Premier Water Tanks	421
PrepWell Industry™	118
Presray Corporation	411
Prism Lighting Services, LLC	12
Progress Solar Solutions	6
ProPac, Inc.	5
PS Flood Barrier	708
READY AMERICA, INC.....	530
READYWISE, INC.....	318
Rescue 42	409

Company	Booth
Resensys LLC	810
Royal Plus	700
S&H Foodservice.....	531
Safety Products Inc	431
Safeware Inc.....	229
SAK Enterprises Inc	606
Satellite Industries/Suites	Veh 18
SatPhoneStore	440
SDR	301
ServiceMaster Recovery Management	218
SERVPRO Disaster Recovery Team Isaacson.....	435
SERVPRO of West Palm Beach	632
SkyBase Communications LLC	300
SLSCO,LTD	203
South Florida Electric, LLC.....	228
Spot Coolers.....	302
Stalker Street Dynamics	719
Stronger than the Storm	731
Sun Coast Resources, Inc.....	507
Sunbelt Rentals	611
TAW Power Systems, An IPS Company.....	328
Taylor Power Systems, Inc.	10
Tetra Tech, Inc.	303
TFR Enterprises, Inc.....	311
The Institute for Diversity and Inclusion in Emergency Management.....	231
The Masketeers, LLC	122
The Sandbagger LLC	123
Thomas Howell Ferguson P.A. CPAs	808
Thompson Consulting Services, LLC	313
Thunder Creek Equipment	2
Tidal Basin	312
T-Mobile	612 Veh 11
Tradewinds Power Corp	522
Traube Tents & Structures	721
True North Emergency Management, LLC.....	430
Trystar	706
U.S. Flood Control Corp.	501
United Rentals	814
United Site Services	20
University of Florida Fire and Emergency Services....	332
US Ecology, a Republic Services Company	607
USA UP STAR	Veh 9
Verizon.....	235 Veh 17
West Networks	707
Witt O'Brien's.....	401
WSP USA	216
ZUMRO	223

EXHIBIT HALL EVENTS

Please visit the many vendors in the Exhibit Hall who support the GHC!



Connect 2 Win!

WIN a \$200 Amazon Gift Card from GHC - 5 Winners!

CONNECT with EXHIBITORS to WIN!

Participating exhibitors have purchased a limited number of entry tickets. Exhibitors will distribute tickets (at their discretion) to attendees who make a 'connection' with them about their product or service. Fill out your tickets and put them in the raffle drum in the center of the exhibit hall. Five winners drawn during Exhibit Hall hours. You need not be present to win and can enter multiple tickets!

Participating exhibitors are listed on the MOBILE APP
and the flyer in your portfolio!

Green Screen Photo Booth

While visiting our many exhibitors in the Exhibit Hall, stop by the Photo Booth where you will have the opportunity to picture yourself...literally...in the midst of a raging hurricane (and other disasters), and demonstrate to the world just how you would react to the experience. But wait...there's more! You will also be supplied with a photographic memento (a 4"x6" photo and on-site access to electronic format) that can be used not only to commemorate the event, but also to impress others with your bravery (hopefully!) and your preparedness prowess!

This is underwritten as a free service to attendees by:



2023 Training Sessions

- TS1. Fundamentals of Grants Management (L0705)
- TS2. Mitigation for Emergency Managers (G393)
- TS3. Homeland Security Exercise and Evaluation Program (HSEEP) (L146)
- TS4. Emergency Planning (G235)
- TS5. Community Mass Care Management (G108)
- TS6. Facilitative Leadership for Mobilizing the Community
- TS7. Tropical Meteorology 1: FEMA/EMI 311 – Hurricane Readiness
- TS8. Hurricane Impacts - They're Much Bigger Than the Cone
- TS9. Extreme Water Hazards: A Closer Inspection of Hurricane Ian's Catastrophic Storm Surge
- TS10. Beyond the Weather Service: NOAA's Coastal Disaster Response and Recovery Capabilities
- TS11. Hurricane Housing Recovery and Mitigation: Challenges and Solutions
- TS12. NIMS ICS Division/Group Supervisor (L0960)
- TS13. Multi Hazard Emergency Planning for Schools (FL364)
- TS14. Public Assistance Grant Administration and DRRA 2018: The New PA Model Exposed!
- TS15. Health Care Emergency Management
- TS16. Evacuation & Re-Entry Planning (G358)
- TS17. Management of Spontaneous Volunteers in Disasters (G489)
- TS18. Hands-On with Team Awareness Kit (TAK)
- TS19. Emergency Operations Center (EOC) Tour
- TS20. Emergency Operations Center (EOC) Tour (repeat)
- TS21. Introduction to HURREVAC
- TS22. Applying Web-Based HURREVAC***
- TS23. Critical Infrastructure Resilience and Community Lifelines (MGT414)
- TS24. Volunteers & Donations (G288)
- TS25. Integrated Preparedness Planning (IPP/IPPW) Formerly the MYTEP/TEPW
- TS26. Looking For A Job? Now What Do You Do?
- TS27. Putting Paws in Action!
- TS28. Best Social Media Practices for Emergency Management During Hurricanes
- TS29. Emergency Communications: You Are Not Reaching Everyone
- TS30. Intro to PA Houses of Worship
- TS31. Understanding the Details of the Florida Recovery Obligation Calculation Initiative (F-ROC)
- TS32. Psychological First Aid: Helping Others in Times of Stress
- TS33. Palm Beach County's Debris Management Plan: Tour the SWA's Renewable Energy Facility
- TS34. Hurricane Hunter Tour
- TS35. Hurricane Hunter Tour (repeat)

BOLD ITALICS INDICATE ADVANCED LEVEL SESSION

2023 Training Session Descriptions

TS1. Fundamentals of Grants Management (L0705) – Organized by Rick Knowles

Sunday, May 7, 1:30 p.m. – 5:00 p.m. PBCCC 1E
Monday, May 8, 8:30 a.m. – 5:00 p.m.
Tuesday, May 9, 8:30 a.m. – 5:00 p.m.
Wednesday, May 10, 1:30 p.m. – 5:00 p.m.

This course is designed for FEMA grantees and sub-grantees. This course includes discussion and activities to improve the ability of FEMA grantees to administer Federal grant funding. This course includes discussion and activities to allow sub-grantees to understand the constraints and limitations of federal grant funding usage. This course provides the student with the information to gain knowledge and understanding on how to work with Federal, State, and Sub-grantee partners to properly administer and manage grants awarded under a Federal Disaster Declaration. Even though each disaster is different, the rules for grants management are basically the same and based upon the rules, policies, and procedures associated with the originating Federal entity.

Level: Basic
Limit: 45

TS2. Mitigation for Emergency Managers (G393) – Organized by Lyle Briggs

Sunday, May 7, 1:30 p.m. – 5:00 p.m. PBCCC 1G/1H
Monday, May 8, 8:30 a.m. – 5:00 p.m.
Tuesday, May 9, 8:30 a.m. – 5:00 p.m.
Wednesday, May 10, 1:30 p.m. – 5:00 p.m.

This course is designed to train emergency managers and other interested individuals who have no specialized technical background, but can support mitigation efforts as advocates. This session provides activities and exercises that build the participant's abilities to: perform the tasks and responsibilities of the emergency manager's role; create long-term strategies for disaster-resistant communities; identify local mitigation opportunities; select mitigation solutions to hazard risk problems; and find resources to carry out mitigation activities in a post-disaster environment.

Level: Basic
Limit: 30

TS3. Homeland Security Exercise and Evaluation Program (HSEEP) (L146) – Organized by John Wilson

Sunday, May 7, 1:30 p.m. – 5:00 p.m. PBCCC 2E
Monday, May 8, 8:30 a.m. – 5:00 p.m.
Tuesday, May 9, 8:30 a.m. – 5:00 p.m.
Wednesday, May 10, 1:30 p.m. – 5:00 p.m.

The Homeland Security Exercise and Evaluation Program (HSEEP) (L146) course 2021 Version 14.1 will assist in all areas (design, development, conduct, evaluation, and improvement planning) relating to exercises and familiarize participants with the federal guidance and direction to build and maintain self-sustaining exercise programs. HSEEP is a capabilities and performance-based exercise program that provides a standardized methodology and terminology for all exercise areas. Class activities include creating exercise documentation, conducting exercise planning conferences and briefings, and practicing exercise evaluation. Individuals involved in all areas of exercises are encouraged to attend. HSEEP is an interactive course that allows participants to share personal lessons learned while gaining practical experience. Certificates are being issued by the FEMA Emergency Management Institute (EMI). HSEEP is an intermediate-level course and participants should come with a basic understanding of exercise design.

Prerequisites:

IS-120.C: An Introduction to Exercises

IS-130.A: Exercise Evaluation and Improvement Planning

Level: Basic

Limit: 30

TS4. Emergency Planning (G235) – Organized by Jeff Goldberg

Monday, May 8, 8:30 a.m. – 5:00 p.m.

PBCCC 1C

Tuesday, May 9, 8:30 a.m. – 5:00 p.m.

Wednesday, May 10, 1:30 p.m. – 5:00 p.m.

This course offers training in the fundamentals of the emergency planning process, including the rationale behind planning. It will develop the capability for effective participation in the all-hazard emergency operations planning process to save lives and protect property threatened by disaster. This training is part of the FEMA Advanced Professional Series Certificate.

Level: Basic

Limit: 35

TS5. Community Mass Care Management (G108) - Organized by Jeff Goldberg

Monday, May 8, 8:30 a.m. – 5:00 p.m.

PBCCC 1D

Tuesday, May 9, 8:30 a.m. – 5:00 p.m.

Wednesday, May 10, 1:30 p.m. – 5:00 p.m.

This course provides training for local communities to prepare for and manage the Mass Care/Emergency Assistance (MC/EA) functions effectively. The goal is to prepare community agencies, organizations, and businesses to work together in coordination with Emergency Management and traditional MC providers to plan and provide MC/EA services to those affected by disaster.

Selection Criteria: This course is intended for MC coordinators, management staff, non-governmental organization leaders, private sector, and other emergency management staff that are a part of the team and have a responsibility for effective MC/EA preparedness and response. This training is part of the FEMA Advanced Professional Series Certificate.

Level: Basic

Limit: 30

TS6. Facilitative Leadership for Mobilizing the Community – Organized by Paul Johnston

Monday, May 8, 8:30 a.m. – 5:00 p.m.

PBCCC 1L

Facilitative Leadership is the process of incorporating multiple people or organizations into the decision-making process and coordinating their efforts towards a shared goal. Instead of a single leader or team lead making an individual decision, multiple people are involved to make a group decision and to create a collaborative effort. In this training we will discuss collaborative values, practices and tools to help a group increase effectiveness by improving its processes and structure for its meetings and work sessions.

Level: Basic

TS7. Tropical Meteorology 1: FEMA/EMI 311–Hurricane Readiness – Organized by Pablo Santos

Monday, May 8, 8:30 a.m. – 5:00 p.m.

Hilton Coral C

This one-day course is an introduction to the National Hurricane Center's forecast procedures and products, and FEMA's National Hurricane Program's tools for how to incorporate them into planning and response. Topics include hurricane basics, forecast uncertainty,

and NHC and NWS products. This course also covers the storm surge hazard, readiness checklists, decision aids, and evacuation planning. This course is intended for persons responsible for developing or revising hurricane preparedness plans and procedures for businesses, government agencies, and coastal communities.

Level: Basic

TS8. Hurricane Impacts - They're Much Bigger Than the Cone – *Organized by Pablo Santos*

Tuesday, May 9, 8:30 a.m. – 5:00 p.m.

Hilton Coral C

This session will leverage historical accounts of known impacts from recent tropical systems relative to their original forecast track and cone of uncertainty. Past storms include: Hurricane Charley, Matthew, Irma, Michael, Dorian, Ian and Nicole. At select times/locations and with 20/20 hindsight, this session will promote interactive discussions and exercises on “potential impacts” for which community preparations should be made using the information at hand. The group challenge is to consider effective decision-making and subsequent messaging for “*getting the right people to do the right things at the right times.*”

Level: Basic

TS9. Extreme Water Hazards: A Closer Inspection of Hurricane Ian's Catastrophic Storm Surge – *Organized by Pablo Santos*

Wednesday, May 10, 1:30 p.m. – 3:00 p.m.

Hilton Coral C

The training session will address those tropical situations when aspects of the combined water hazard become extreme. Specifically, a more detailed inspection of Hurricane Ian will be provided, exploring its catastrophic storm surge along the southwest Florida Peninsula, its excessive/flooding rain that striped central Florida while moving inland, and the resulting record river flooding on the Saint Johns River. Participants will be challenged to weigh the imperilment to life, the threat to property, and to facilitate resource management and staging. Interactions will include exposure to the first operational application of the Flood Inundation Mapping (FIM) initiative.

Level: Basic

TS10. Beyond the Weather Service: NOAA's Coastal Disaster Response and Recovery Capabilities – *Organized by Pablo Santos*

Wednesday, May 10, 3:30 p.m. – 5:00 p.m.

Hilton Coral C

While many federal, state, and local emergency managers are familiar with the products and decision support tools provided by NOAA's National Weather Service, the response and recovery capabilities of the National Ocean Service (NOS) are lesser known. This session will highlight NOS's response and recovery capabilities for coastal counties. A group of experts from NOS will demonstrate the functions of available tools and resources, provide an overview of available support, and how coastal resource and emergency managers may request NOS services.

Level: Basic

TS11. Hurricane Housing Recovery and Mitigation: Challenges and Solutions – *Organized by John Wilson*

Monday, May 8, 8:30 a.m. – 5:00 p.m.

PBCCC 2A

Achieving housing mitigation and recovery goals through emergency management is all about partnering for success! Housing resilience, mitigation, and recovery are at the forefront as communities prepare to rebuild post-disaster. This session covers mitigation strategic planning, housing funding sources, Florida's roll-out of its state led biweekly Disaster Housing Task Force (a collaboration between the Florida Housing Coalition and Florida Division of Emergency Management), eviction prevention, and strategies for achieving permanent affordability through long-term recovery. Speakers will focus on the following topics: mitigation & funding, response and recovery, case management & legal aid.

Prerequisites:

Recommended IS-100:SC

Recommended IS-700

Level: Basic

Limit: 60

TS12. NIMS ICS Division/Group Supervisor (L0960) – Organized by John Wilson

Sunday, May 7, 1:30 p.m. – 5:00 p.m.

Monday, May 8, 8:30 a.m. – 5:00 p.m. PBCCC 2B

Tuesday, May 9, 8:30 a.m. – 5:00 p.m.

Wednesday, May 10, 1:30 p.m. – 5:00 p.m.

This training session will provide local and state emergency management and emergency service personnel with the following knowledge base:

- The responsibilities of the Division Supervisor at the pre-response, response, operational, demobilization, and post-incident phases of an incident.
- The information gathering and dissemination responsibilities of the Division Supervisor.
- The leadership and personnel supervision responsibilities of the Division Supervisor.
- The risk management and safety responsibilities of the Division Supervisor.
- The session will include exercises, simulations, discussions, and a final exam.

Prerequisites:

IS-100.c Introduction to the Incident Command System (ICS)

IS-200.c Basic Incident Command System for Initial Response

IS-700.b An Introduction to the National Incident Management System (NIMS)

IS-800.d National Response Framework (NRF), An Introduction

V2013 or v2019 E/L/G 0300 Intermediate Incident Command System for Expanding Incidents

Level: Basic

Limit: 30

TS13. Multi Hazard Emergency Planning for Schools (FL364) – Organized by John Wilson

Monday, May 8, 8:30 a.m. – 5:00 p.m. PBCCC 2C

Tuesday, May 9, 8:30 a.m. – 5:00 p.m.

This training session provides schools with knowledge, skills and tools needed to refine and develop an all-hazards Emergency Operations Plan (EOP) and to identify how to train and exercise the school EOP. This course follows the guidance set forth in the FEMA Comprehensive Preparedness Guide CPG 101, for developing emergency operations plan and explains how to use the National Incident Management System (NIMS) as the foundation for planning and building partnerships with outside agencies such as law enforcement, fire, and emergency management. **Participants should bring a copy of their schools Emergency Operations Plan to the course.**

Level: Basic

Limit: 30

TS14. Public Assistance Grant Administration and DRRA 2018: The New PA Model Exposed! – *Organized by Jeff Goldberg*

Monday, May 8, 8:30 a.m. – 5:00 p.m. PBCCC 2D
Tuesday, May 9, 8:30 a.m. – 5:00 p.m.

This intermediate class focuses on bridging the gap between response and recovery regarding the FEMA-PA grant development. Topics discussed will highlight the effects that DRRA 2018 and Interim Policies, the new PA Model, and the new Grants Portal/Manager Program have had on grant development & funding obligation, specifically the changes within FEMA to transfer the responsibility of grant development from FEMA to the applicant. This class is taught by seasoned FEMA-PA experts with substantive experience with various local applicants, FDEM and FEMA, in the legal, response, and recovery fields. Issues for discussion will include pre-event emergency protective measures, grant development, funding, appeals and grant closeout. This class is designed to shed light on topics affecting funding today.

Participants should have a basic knowledge of FEMA-PA grant development.

Level: Basic

TS15. Health Care Emergency Management – *Organized by John Wilgis*

Monday, May 8, 8:30 a.m. – 5:00 p.m. PBCCC 2F
Tuesday, May 9, 8:30 a.m. – 5:00 p.m.

The Health Care Emergency Management course is a two-day classroom-based course that provides health care emergency coordinators training related to emergency management principles, key components, and regulatory concepts of emergency preparedness and response programs. It furthers the student's knowledge with an overview of the agencies, organizations, and systems in Florida that they will work with. This course ensures that Florida's health care emergency management professionals are equipped with the most current information, standards, regulations, and best practices in the health care emergency management community.

Level: Basic
Limit: 35

TS16. Evacuation & Re-Entry Planning (G358) – *Organized by Andrew Sussman*

Monday, May 8, 8:30 a.m. – 5:00 p.m. Hilton Coral A
Tuesday, May 9, 8:30 a.m. – 5:00 p.m.

This 12-hour course provides participants with the knowledge and skills needed to design and implement an evacuation and re-entry plan for their jurisdictions. It uses a community's vulnerability analysis and evacuation plan. It also addresses evacuation behavior and recommends methods to make evacuation and re-entry more efficient. This course does not address the decision to evacuate or re-enter.

Level: Basic
Limit: 30

TS17. Management of Spontaneous Volunteers in Disasters (G489) – *Organized by Christy Rojas*

Monday, May 8, 8:30 a.m. – 5:00 p.m. Hilton Coral B

This course is designed to identify those issues and challenges in the management of spontaneous volunteers, how to manage these volunteers, develop a plan for your community, learn how to utilize and operate a Volunteer Reception Center (VRC). This course will also discuss best practices for managing volunteers including their use by VOADs.

Level: Basic
Limit: 30

TS18. Hands-On with Team Awareness Kit (TAK) – *Organized by Jeff Goldberg*

Monday, May 8, 8:30 a.m. – 5:00 p.m. Hilton Coral E

The Team Awareness Kit (TAK) is a free suite of georeferenced imagery and communications tools that allow for scaled operational planning, data sharing, reconnaissance collection, and asset tracking. Teams using TAK are able to communicate and share location information in real time, even in restricted communications environments. This will be a six-hour hands-on training to introduce attendees to the Team Awareness Kit (TAK) using Android Team Awareness Kit (ATAK). This basic training will walk participants through installation, configuration and use of the Geospatial Software. The training will conclude with hands-on exercises allowing participants to utilize the software in a variety of EM related scenarios.

Participants are encouraged to provide their own Android mobile device unless prior arrangements are made with the instructors. Apple devices can be used but may have some limited functionality.

Level: Basic

TS19. Emergency Operations Center (EOC) Tour – *Organized by Bill Johnson, RN*

Monday, May 8, 8:30 a.m. – 5:00 p.m. Offsite Tour

A well-designed and fully functional Emergency Operations Center (EOC) is critical for the successful management of disasters. This six-hour training session includes visits to three (3) area EOC's including the Palm Beach County EOC, the City of West Palm Beach EOC, and the South Florida Water Management District EOC. Presentations will include information on organizing, staffing, and operating these facilities. Best practices will also be shared. **Bus loads at 8:00 a.m. at the southeast entrance of the convention center.**

Please note: Lunch is scheduled for one hour after the second tour at a local restaurant along the route. Attendees are responsible for their own meal costs and payment.

Level: Basic
Limit: 35

TS20. Emergency Operations Center (EOC) Tour (repeat) – *Organized by Bill Johnson, RN*

Tuesday, May 9, 8:30 a.m. – 5:00 p.m. Offsite Tour

A well-designed and fully functional emergency operations center (EOC) is critical for the successful management of disasters. This six-hour training session includes visits to three (3) area EOCs including the Palm Beach County EOC, the City of West Palm Beach EOC, and the South Florida Water Management District EOC. Presentations will include information on organizing, staffing, and operating these facilities. Best practices will also be shared. **Bus loads at 8:00 a.m. at the southeast entrance of the convention center.**

Please note: lunch is scheduled for one hour after the second tour at a local restaurant along the route. Attendees are responsible for their own meal costs and payment.

Level: Basic
Limit: 35

TS21. Introduction to HURREVAC – Organized by John Wilson

Tuesday, May 9, 8:30 a.m. – 12:00 p.m. PBCCC 1L

The National Hurricane Program's Decision Support Tool (HURREVAC) is a free web-based platform available to government emergency managers that provides evacuation timing guidance. HURREVAC combines real-time National Hurricane Center forecast products and storm surge modeling with evacuation clearance times from Hurricane Evacuation Studies. The focus of the Introduction to HURREVAC training session is to discuss HURREVAC features and functionality and provide a demonstration of the user interface.

Prerequisites:

Student will need to bring their own laptop and register for a web-based HURREVAC account before the conference.

Level: Basic

Limit: 50

TS22. Applying Web-Based HURREVAC – Organized by John Wilson

Tuesday, May 9, 1:30 p.m. – 5:00 p.m. PBCCC 1L

The National Hurricane Program's Decision Support Tool (HURREVAC) is a free web-based platform available to government emergency managers that provides evacuation timing guidance. HURREVAC combines real-time National Hurricane Center forecast products and storm surge modeling with evacuation clearance times from Hurricane Evacuation Studies. The Applying Web-Based HURREVAC training session's purpose is to demonstrate how to apply decision support functionality based on hurricane scenarios, including hurricane hazard risk assessment and evacuation timing guidance.

Prerequisites:

Student will need to bring their own laptop and register for a web-based HURREVAC account before the conference.

Level: Advanced

Limit: 50

TS23. Critical Infrastructure Resilience and Community Lifelines (MGT414) – Organized by Rick Knowles

Tuesday, May 9, 8:30 a.m. – 5:00 p.m. PBCCC 2A

In this course participants will learn how to develop a roadmap for progress toward the National Preparedness Goal by facilitating the development of resilience considerations and involving essential community critical infrastructure partners. Participants will learn how to formulate considerations for the resilience of community assets that leverage cross-sector partnerships. These considerations enhance the whole community's ability to manage the risk associated with critical infrastructure protection efforts. Participants will have an opportunity to practice the practical skills necessary to formulate considerations in the local community.

Level: Basic

Limit: 45

TS24. Volunteers & Donations (G288) – Organized by Christy Rojas

Tuesday, May 9, 8:30 a.m. – 5:00 p.m. Hilton Coral B

Wednesday, May 10, 1:30 p.m. – 5:00 p.m.

This training will support local governments and their emergency management partners in preparing for, responding to, and recovering from disaster events at the local level. The course is designed to strengthen the abilities of local jurisdictions to successfully prepare

Continued on page 20

37th Annual Governor's Hurricane Conference

2023 TRAINING SESSIONS

Room	Sunday, May 7 th	
	1:30 p.m. - 5:00 p.m.	
1E	TS1. Fundamentals of Grants Management – day 1	
1G/1H	TS2. Mitigation for Emergency Managers (G393) – day 1 (limit 30)	
2E	TS3. Homeland Security Exercise and Evaluation Program (L146) – day 1 (limit 35)	
2B	TS12. NIMS ICS Division/Group Supervisor (L0960) – day 1 (limit 30)	
Room	Monday, May 8 th	
	8:30 a.m. - 5:00 p.m.	
1C	TS4. Emergency Planning (G235) – day 1 (limit 35)	
1D	TS5. Community Mass Care Management (G108) – day 1 (limit 30)	
1E	TS1. Fundamentals of Grants Management – day 2	
1G/1H	TS2. Mitigation for Emergency Managers (G393) – day 2 (limit 30)	
1L	TS6. Facilitative Leadership for Mobilizing the Community	
2A	TS11. Hurricane Housing Recovery and Mitigation: Challenges and Solutions (limit 60)	
2B	TS12. NIMS ICS Division/Group Supervisor (L0960) – day 2 (limit 30)	
2C	TS13. Multi-Hazard Emergency Planning for Schools (FL364) – day 1 (limit 30)	
2D	TS14. Public Assistance Grant Administration and DRRRA 2018: The New PA Model Exposed! – day 1	
2E	TS3. Homeland Security Exercise and Evaluation Program (L146) – day 2 (limit 35)	
2F	TS15. Health Care Emergency Management – day 1 (limit 35)	
Hilton Coral A	TS16. Evacuation and Re-Entry Planning (G358) – day 1 (limit 30)	
Hilton Coral B	TS17. Management of Spontaneous Volunteers in Disasters (G489) (limit 30)	
Hilton Coral C	TS7. Tropical Meteorology 1: FEMA/EMI 311 – Hurricane Readiness	
Hilton Coral E	TS18. Hands-On with Team Awareness Kit (TAK)	
Off-Site	TS19. Emergency Operations Center Tour (bus loads at 8:00 a.m.) (limit 35)	
Room	Tuesday, May 9 th	
	8:30 a.m. - 12:00 p.m.	1:30 p.m. - 5:00 p.m.
1C	TS4. Emergency Planning (G235) – day 2 (limit 35)	
1D	TS5. Community Mass Care Management (G108) – day 2 (limit 30)	
1E	TS1. Fundamentals of Grants Management – day 3	
1G/1H	TS2. Mitigation for Emergency Managers (G393) – day 3 (limit 30)	
1L	TS21. Introduction to HURREVAC (limit 50)	TS22. Applying Web-Based HURREVAC (limit 50)
2A	TS23. Critical Infrastructure Resilience and Community Lifelines (MGT414) (limit 45)	
2B	TS12. NIMS ICS Division/Group Supervisor (L0960) – day 3 (limit 30)	
2C	TS13. Multi-Hazard Emergency Planning for Schools (FL364) – day 2 (limit 30)	
2D	TS14. Public Assistance Grant Administration and DRRRA 2018: The New PA Model Exposed! – day 2	
2E	TS3. Homeland Security Exercise and Evaluation Program (L146) – day 3 (limit 35)	
2F	TS15. Health Care Emergency Management – day 2 (limit 35)	
Hilton Coral A	TS16. Evacuation and Re-Entry Planning (G358) – day 2 (limit 30)	
Hilton Coral B	TS24. Volunteers & Donations (G288) – day 1 (limit 30)	
Hilton Coral C	TS8. Hurricane Impacts - They're Much Bigger Than the Cone	
Hilton Coral D	TS25. Integrated Preparedness Planning (IPP/IPPW) Formerly the MYTEP/TEPW (limit 40)	
Hilton Coral E	TS26. Looking For A Job? Now What Do You Do? (limit 30)	
Off-Site	TS20. Emergency Operations Center Tour (bus loads at 8:00 a.m.) (limit 35)	
Room	Wednesday, May 10 th	
	1:30 p.m. - 3:00 p.m.	3:30 p.m. - 5:00 p.m.
1B	TS27. Putting Paws in Action!	
1C	TS4. Emergency Planning (G235) – day 3 (limit 35)	
1D	TS5. Community Mass Care Management (G108) – day 3 (limit 30)	
1E	TS1. Fundamentals of Grants Management – day 4	
1G/1H	TS2. Mitigation for Emergency Managers (G393) – day 4 (limit 30)	
1L	TS28. Best Social Media Practices for Emergency Management During Hurricanes (limit 40)	
2B	TS12. NIMS ICS Division/Group Supervisor (L0960) – day 4 (limit 30)	
2C	TS29. Emergency Communications: You Are Not Reaching Everyone	
2D	TS30. Intro to PA Houses of Worship (limit 40)	
2E	TS3. Homeland Security Exercise and Evaluation Program (L146) – day 4 (limit 35)	
Hilton Coral A	TS31. Understanding the Details of the Florida Recovery Obligation Calculation Initiative (F-ROC) (limit 40)	
Hilton Coral B	TS24. Volunteers & Donations (G288) – day 2 (limit 30)	
Hilton Coral C	TS9. Extreme Water Hazards: A Closer Inspection of Hurricane Ian's Catastrophic Storm Surge	TS10. Beyond the Weather Service: NOAA's Coastal Disaster Response and Recovery Capabilities
Hilton Coral D	TS32. Psychological First Aid: Helping Others in Times of Stress (limit 35)	
Off-Site	TS33. Palm Beach County's Debris Management Plan: Tour the SWA's Renewable Energy Facility (bus loads at 1:00 p.m.) (limit 35)	

37th Annual Governor's Hurricane Conference

2023 WORKSHOP SESSIONS

Room	Thursday 8:30 a.m. – 10:00 a.m.	Thursday 1:30 p.m. – 3:00 p.m.	Thursday 3:30 p.m. – 5:00 p.m.	Friday 8:30 a.m. – 10:00 a.m.	Friday 10:30 a.m. - Noon
Palm Beach County Convention Center					
1A		WS114. How to Become an Emergency Management Influencer	WS126. Florida National Guard Update	WS139. Municipal Emergency Management: Building a Culture of Preparedness	WS150. Post Ian and Nicole Flooding
1B/1C	WS102. Florida's Venture Back into Temporary Housing—The 2022 Hurricane Experience	WS115. Individual Assistance—The Local Role in a Catastrophic Disaster	WS127. Using Data Analytics to Improve Response, Recovery and Mitigation Efforts		WS151. What Happens When the Government Needs Help
1D/1E	WS103. Public Assistance Hot Topics	WS116. Politics, Elected Officials & Disasters	WS128. Do You Have a Swiss Army Knife in Your Community?		WS152. Atlantic Basin Hurricane Season Prediction/Outlook
1G/H/I	WS104. Large Disasters, Partnerships, and Innovative Mass Care Solutions	WS117. Sheltering Pets in Hurricane Ian	WS129. Recovery, Sheltering and Resident Transition	WS140. Engaging with Your Human Services Department in All Phases of Disaster	WS153. Why is There a Reporter in the Lobby?
1L	WS105. Damage Assessment Best Practices	WS118. How Infrastructure Dependency Analysis and Planning Can Mitigate Disaster Impacts	WS130. Community Lifelines Operationalized- Hurricane Ian	WS141. Florida Recovery Obligation Calculation Initiative (F-ROC) Applicant Assessment	WS154. Hurricane Ian Logistics: Best Practices & Lessons Learned
2A	WS106. Aligning Planning Processes to Make Risk Mitigation & Preparedness Initiatives More Efficient, Effective, and Equitable	WS119. The Impact of Hurricane Michael on the Mental Wellbeing of Area First Responders	WS131. Interdisciplinary Approaches to Analyzing the Impacts of Hurricanes in the Southeastern U.S. and Caribbean	WS142. Safe Sheltering of Vulnerable Populations in Hurricane-Pandemics: A Data-Analytical and Socio-Technical Decision-Making Framework	WS155. Student Academic Research Presentations
2B/2C	WS107. What is Accessible Emergency Information? Why is it Critical?	WS120. Vulnerable Populations in Recovery	WS132. Unpacking Successes in BRIC	WS143. How to Manage a HMGP Project Post-Award	WS156. The Basics of Special Needs Shelter Support
2D	WS108. Mental and Behavioral Health Support for the Emergency Response Community Part 1	WS121. Mental and Behavioral Health Support for the Emergency Response Community Part 2	WS133. Mental and Behavioral Health Support for the Emergency Response Community Part 3	WS144. Medical Support for Vulnerable Populations Part 1	WS157. Medical Support for Vulnerable Populations Part 2
2E	WS109. When the "Stuff" Starts to Pile Up: How to Navigate the Second Disaster	WS149. FDOT Hurricanes Ian and Nicole Response- Our Story	WS134. Hurricane Ian Response Through the Lens of Service and Guided by the Toyota Production System	WS145. People with Access & Functional Needs Including Those with Disability in Emergencies & Disasters	WS158. Florida Agency for Health Care Administration: eTools for Emergencies
2F	WS110. Hero Helpers: Resources to Support Children Post Disaster	WS122. Role of Women in Disaster Response and Recovery	WS135. Are you FEPA certified? Let's Talk About the NEW Online Application Portal!	WS146. Implementing Diversity, Equity, and Inclusion in Disaster Recovery	WS159. Debris Management 101 for Emergency Managers

Hilton West Palm Beach					
Coral A/B	WS111. Inclusive Disaster Planning with Public Librarians at the Table	WS123. Drone Program Development and Disaster Deployments in 2022	WS136. Disaster Intelligence Gathering and Analysis	WS147. Expanding Emergency Management Programs Into the K-12	WS160. Orange County Public Schools- Hurricane Ian Debrief
Coral C	WS112. Panel Discussion: The Psychology of Decision-Making During Hurricane Emergencies	WS124. NWS Decision Support in High Impact Situations: From Preparedness to Recovery	WS137. Best Practices using HURREVAC for Hurricane Decision Making	WS148. Future Plans for the Suite of NWS Tropical Products	
Coral D/E	WS113. The Power of Collaboration: Hurricane Ian Response Done Right	WS125. Team Rubicon - How we Get Stuff Done for you!	WS138. Hurricane Ian PIO Deployment		

for and handle volunteer and donations management issues that may arise. The course content and activities may also serve as a template, thereby enhancing uniformity in addressing areas of donated unsolicited goods, unaffiliated volunteers, and undesignated cash. This training also provides information regarding the state TS2s volunteer and donations management responsibilities, which are designed to help build relationships between government and non-governmental organizations.

Level: Basic

Limit: 30

TS25. Integrated Preparedness Planning (IPP/IPPW) Formerly the MYTEP/TEPW – *Organized by Rick Knowles*

Tuesday, May 9, 8:30 a.m. – 5:00 p.m.

Hilton Coral D

In 2020, FEMA updated guidance that readjusts from the Training and Exercise Planning Workshop (TEPW) to the Integrated Preparedness Planning Workshop (IPPW) and the end product, from the Multi-Year Training and Exercise Plan (MYTEP), to the Integrated Preparedness Plan (IPP). This interactive session will cover what you need to know about the changes (yes, it is different!) and how to move your organization forward under the new system. In this session we will discuss:

- What the changes mean to you
- Defining the Integrated Preparedness Cycle
- Conducting the Integrated Preparedness Planning Workshop
- Walk-through of the New Integrated Preparedness Plan
- Tools and Templates

Level: Basic

Limit: 40

TS26. Looking For A Job? Now What Do You Do? – *Organized Bill Johnson, RN*

Tuesday, May 9, 8:30 a.m. – 5:00 p.m.

Hilton Coral E

This training session will be a one (1) full-day class that will present information on searching for a job and the interview process. The presenters for this course will include four (4) seasoned emergency managers. The presenters will discuss how to get yourself discovered, how to develop a successful resume, and to have an effective interview. Upon completion of this course, participants will have their resumes reviewed by the presenters and will participate in a mock interview. **Participants are required to bring four (4) printed copies of their resume to the session.**

Level: Basic

Limit: 30

TS27. Putting Paws in Action! – *Organized by Andrew Sussman*

Wednesday, May 10, 1:30 p.m. – 5:00 p.m.

PBCCC 1B

Come see some PAWsome PAWfessionals at work! The audience will learn the different types of jobs service animals provide as well as the legal definition of a service animal, recent changes pertaining to service animals and the differences between other types of working animals such as police work, search and rescue, emotional and therapy animals. Where they can go what they can do. Live demo at the end.

Level: Basic

TS28. Best Social Media Practices for Emergency Management During Hurricanes – *Organized by John Jamason*

Wednesday, May 10, 1:30 p.m. – 5:00 p.m. PBCCC 1L

Many public safety agencies now have social media platforms. Yet, most agencies are not effectively using their social media accounts, even in crisis situations like hurricanes. Successful social media usage does not happen by chance. It requires legitimate thought and planning. Overall, social media is complex and can get out of hand fast. This research and subsequent presentation is about thinking all the way through social media usage for public safety agencies during hurricane response operations. The presentation will provide an in depth look at technical language surrounding the subject matter. The presentation will then look at benefits and potential concerns to social media, including a case study, followed by how to navigate social media to maximize outcomes. The presentation will wrap up with recommendations and an opportunity for discussion.

Level: Basic
Limit: 40

TS29. Emergency Communications: You Are Not Reaching Everyone - *Organized John Jamason*

Wednesday, May 10, 1:30 p.m. – 5:00 p.m. PBCCC 2C

Deaf and hard of hearing is a disability that is overlooked. It is difficult to know how many people have hearing loss. National Institute of Disabilities estimates 11.5 million ASL users. If the person self-identifies, or you see the hearing aids/cochlear implants or see them signing, you might know there is hearing loss. According to Gallaudet University (Washington, DC), approximately 10% of each state's population is considered to be deaf and hard of hearing. For states like Florida, with a higher number of senior citizens, the number increases to 16%. With almost 21 million residents in Florida, about 3,360,000 are considered deaf and hard of hearing. We provide professional sign language interpreters in all aspects of a disaster where communication with this community is crucial. This training will help you to identify resources in your area for locating certified or qualified sign language interpreters for broadcasts, EOC, shelters, and other communication needs pre-disaster, during the disaster, and post-disaster – recovery updates.

Level: Basic

TS30. Intro to PA Houses of Worship – *Organized by Lee Mayfield*

Wednesday, May 10, 1:30 p.m. – 5:00 p.m. PBCCC 2D

This training will provide an overview of the FEMA's Public Assistance Program for Houses of Worship. The course will include an introduction to the grant program and eligibility requirements, the difference between applying to PA directly vs establishing a Mass Care Agreement with the legally responsible government entity, information on cost share, categories of work, and reimbursement requirements for eligible applicants.

Level: Basic
Limit: 40

TS31. Understanding the Details of the Florida Recovery Obligation Calculation Initiative (F-ROC) – *Organized by Lee Mayfield*

Wednesday, May 10, 1:30 p.m. – 5:00 p.m. Hilton Coral A

This course introduces Public Assistance Applicants to the Florida Division of Emergency Management's initiative, Florida Recovery Obligation Calculation (F-ROC). Detail will be provided on updates and changes to submitting forms for Category A (Debris Removal) and Category B (Emergency Protective Measures). It will also cover best practices on how to manage activities before, during, and after an event as well as the F-ROC risk scoring assessment.

Level: Basic
Limit: 40

TS32. Psychological First Aid: Helping Others in Times of Stress – *Organized by John Vicenti*

Wednesday, May 10, 1:30 p.m. – 5:00 p.m. Hilton Coral D

Psychological First Aid: Helping Others in Times of Stress is a basic level course that enables participants to provide basic care, comfort, and support to people who are experiencing disaster-related stress. The course provides a framework for understanding the factors that affect stress responses in disaster relief workers and the clients they serve, introduces the principles of psychological first aid, and provides guidelines for when to refer a client or fellow relief worker to a disaster mental health worker or partner agency focused on mental health or crisis counseling. Participants engage in practice exercises and a review of the course content.

Upon completion of this course, participants will be able to: recognize the signs of stress in clients, co-workers, and themselves, provide immediate support to people who may be experiencing stress by using psychological first aid principles, obtain disaster mental health support for clients, co-workers, and themselves, when needed.

Level: Basic

Limit: 35

TS33. Palm Beach County's Debris Management Plan: Tour the SWA's Renewable Energy Facility – *Organized by Bill Johnson, RN*

Wednesday, May 10, 1:30 p.m. – 5:00 p.m. Offsite Tour

This three hour on-site experience will include Solid Waste Authority of Palm Beach County emergency response staff presenting its debris management plan, which includes interlocal agreements with most municipalities, four qualified contractors, and nine potential sites to manage post-storm debris; a discussion with the waste-to-energy operator(s) on their storm preparation and recovery plans to allow them to continue to operate after an event; and an interactive tour of a renewable energy facility to see an almost \$700 million community investment in the cleanest, greenest, waste-to-energy facility in North America. **Bus loads at 1:00 p.m. at the southeast entrance of the convention center**

Level: Basic

Limit: 35

TS34. Hurricane Hunter Tour – *Organized by Bill Johnson, RN*

Tuesday, May 9, 5:00 p.m. – 7:30 p.m. Off Site

Specially equipped NOAA aircraft play an integral role in hurricane forecasting. Data collected during hurricanes by these high-flying meteorological stations help forecasters make accurate predictions during a hurricane and help hurricane researchers achieve a better understanding of storm processes, improving their forecast models. Take advantage of this unique opportunity to tour their WP-3D aircraft, understand some of the instruments and equipment used during flight to collect meteorological data, and learn from actual crew members and scientists.

Please note: This tour is off-site, outside of regular conference hours, and may be cancelled at any time due to inclement weather. Attendees will be transported from and to the Palm Beach County Convention Center at the conclusion of the tour. **Attendees will be responsible for their own transportation back to their hotel.**

Training Certificates will not be issued for this tour.

Limit: 35

TS35. Hurricane Hunter Tour – *Organized by Bill Johnson, RN*

Tuesday, May 9, 6:00 p.m. – 8:30 p.m. Off Site

Specially equipped NOAA aircraft play an integral role in hurricane forecasting. Data collected during hurricanes by these high-flying meteorological stations help forecasters make accurate predictions during a hurricane and help hurricane researchers achieve a better understanding of storm processes, improving their forecast models. Take advantage of this unique opportunity to tour their WP-3D

aircraft, understand some of the instruments and equipment used during flight to collect meteorological data, and learn from actual crew members and scientists.

Please note: This tour is off-site, outside of regular conference hours, and may be cancelled at any time due to inclement weather. Attendees will be transported from and to the Palm Beach County Convention Center at the conclusion of the tour. **Attendees will be responsible for their own transportation back to their hotel.**

Training Certificates will not be issued for this tour.

2023 Workshops

- WS102. Florida's Venture Back into Temporary Housing--The 2022 Hurricane Experience
- WS103. Public Assistance Hot Topics
- WS104. Large Disasters, Partnerships, and Innovative Mass Care Solutions
- WS105. Damage Assessment Best Practices
- WS106. Aligning Planning Processes to Make Risk Mitigation & Preparedness Initiatives More Efficient, Effective and Equitable
- WS107. What is Accessible Emergency Information? Why is it Critical?
- WS108. Mental and Behavioral Health Support for the Emergency Response Community Part 1
- WS109. When the "Stuff" Starts to Pile Up: How to Navigate the Second Disaster
- WS110. Hero Helpers: Resources to Support Children Post Disaster
- WS111. Inclusive Disaster Planning with Public Librarians at The Table
- WS112. Panel Discussion: The Psychology of Decision-Making During Hurricane Emergencies
- WS113. The Power of Collaboration: Hurricane Ian Response Done Right
- WS114. How to Become an Emergency Management Influencer
- WS115. Individual Assistance--The Local Role in a Catastrophic Disaster
- WS116. Politics, Elected Officials & Disasters
- WS117. Sheltering Pets in Hurricane Ian
- WS118. How Infrastructure Dependency Analysis and Planning Can Mitigate Disaster Impacts
- WS119. The Impact of Hurricane Michael on the Mental Wellbeing of Area First Responders
- WS120. Vulnerable Populations in Recovery
- WS121. Mental and Behavioral Health Support for the Emergency Response Community Part 2
- WS122. Role of Women in Disaster Response and Recovery
- WS123. Drone Program Development and Disaster Deployments in 2022
- WS124. NWS Decision Support in High Impact Situations: From Preparedness to Recovery
- WS125. Team Rubicon - How we Get Stuff Done for you!
- WS126. Florida National Guard Update
- WS127. Using Data Analytics to Improve Response, Recovery and Mitigation Efforts
- WS128. Do You Have a Swiss Army Knife in Your Community?
- WS129. Recovery, Sheltering and Resident Transition
- WS130. Community Lifelines Operationalized-Hurricane Ian
- WS131. Interdisciplinary Approaches to Analyzing the Impacts of Hurricanes in the Southeastern U.S. and Caribbean
- WS132. Unpacking Successes in BRIC
- WS133. Mental and Behavioral Health Support for the Emergency Response Community Part 3
- WS134. Hurricane Ian Response Through the Lens of Service and Guided by the Toyota Production System
- WS135. Are you FEPA certified? Let's Talk About the NEW Online Application Portal!
- WS136. Disaster Intelligence Gathering and Analysis
- WS137. Best Practices using HURREVAC for Hurricane Decision-Making
- WS138. Hurricane Ian PIO Deployment
- WS139. Municipal Emergency Management: Building a Culture of Preparedness
- WS140. Engaging with Your Human Services Department in All Phases of Disaster
- WS141. Florida Recovery Obligation Calculation Initiative (F-ROC) Applicant Assessment

WS142. Safe Sheltering of Vulnerable Populations in Hurricane-Pandemics: A Data-Analytical and Socio-Technical Decision-Making Framework
 WS143. How to Manage a HMGP Project Post-Award
 WS144. Medical Support for Vulnerable Populations Part 1
 WS145. People with Access & Functional Needs Including Those with Disability in Emergency & Disasters
 WS146. Implementing Diversity, Equity and Inclusion in Disaster Recovery
 WS147. Expanding Emergency Management Programs Into the K-12
 WS148. Future Plans for the Suite of NWS Tropical Products
 WS149. FDOT Hurricanes Ian and Nicole Response-Our Story
 WS150. Post Ian and Nicole Flooding
 WS151. What Happens When the Government Needs Help?
 WS152. Atlantic Basin Hurricane Season Prediction/Outlook
 WS153. Why is There a Reporter in the Lobby?
 WS154. Hurricane Ian Logistics: Best Practices & Lessons Learned
 WS155. Student Academic Research Presentations
 WS156. The Basics of Special Needs Shelter Support
 WS157. Medical Support for Vulnerable Populations Part 2
 WS158. Florida Agency for Health Care Administration: eTools for Emergencies–E-PLUS & HFRS
 WS159. Debris Management 101 for Emergency Managers
 WS160. Orange County Public Schools-Hurricane Ian Debrief

2023 Workshop Descriptions

WS102. Florida's Venture Back into Temporary Housing–The 2022 Hurricane Experience – *Organized by Ian Guidicelli*

Thursday, May 11, 8:30 a.m. – 10:00 a.m. PBCCC 1B/C

The lack of non-damaged affordable housing combined with high rental occupancy rates made temporary housing options extremely limited when Hurricanes Ian and Nicole impacted Florida. FEMA implemented its Direct Housing Program in seven counties that provided several options to address these issues; however, the Program is challenged in providing timely and sufficient resources to meet expected demand. To address this shortfall, Florida offered another option to disaster survivors through the Non-Congregate Shelter Program. Here speakers from FDEM overseeing this program describe the pre-planning and implementation of this program, what it was able to accomplish, lessons learned and best practices.

WS103. Public Assistance Hot Topics – *Organized by Lee Mayfield*

Thursday, May 11, 8:30 a.m. – 10:00 a.m. PBCCC 1D/E

This workshop will include a general “State of Public Assistance” overview and a presentation of the most current updates in Public Assistance here in the State of Florida such as the new policy on \$1M Large Project Threshold: Enhanced Small Project Procedures. This session will introduce attendees to FEMA's August 2022 rule change to the Public Assistance Program's Simplified Procedures Large Project Threshold, explore FEMA's subsequent policy guidance, and discuss the procedural changes to Small Projects that FDEM is making in response.

WS104. Large Disasters, Partnerships, and Innovative Mass Care Solutions – *Organized by Ricardo Rosario*

Thursday, May 11, 8:30 a.m. – 10:00 a.m. PBCCC 1G/H/I

Learn how non-profit organizations and other non-traditional partners can help you overcome the growing challenges that result from large disasters and meet the needs of your communities.

Population growth and extreme weather events increases the cost and the complexities associated with disaster response operations. Isolated communities and those that are hard to reach because of floods and other hazards present special challenges. Non-profit organizations, subject matter experts, and other resources in the community that can offer innovative solutions are often underutilized or overlooked. Learn how non-profit organizations and other non-traditional partners can help you overcome challenges and meet the needs of your communities.

The panelists will discuss lessons learned from their 2023 responses in Florida, Kentucky and Alaska as well as discuss how those lessons can be put to use in future disaster.

WS105. Damage Assessment Best Practices – Organized by Lee Mayfield

Thursday, May 11, 8:30 a.m. – 10:00 a.m. PBCCC 1L

In 2022 Hurricane Ian brought extreme challenges for jurisdictions throughout Florida. Damage assessment data collection was critical towards meeting these challenges and in moving counties from response to recovery. This workshop will explore how Manatee County's damage assessment process has evolved over the years, starting with using paper forms after Hurricane Hermine in 2016, to newer, turnkey products for Ian. Manatee County staff will outline how they prepare for assessments before the storm, how stakeholders from different departments collaborate, and how they work with FDEM to make sure data is quickly passed along.

Additionally, Manatee County representatives will be joined by key staff from the Florida Division of Emergency Management (FDEM) to discuss their crucial role in coordinating Joint Preliminary Damage Assessments.

WS106. Aligning Planning Processes to Make Risk Mitigation & Preparedness Initiatives More Efficient, Effective and Equitable – Organized by Jessica Geib

Thursday, May 11, 8:30 a.m. – 10:00 a.m. PBCCC 2A

In the last 30 years, Florida has experienced 10 major landfalling hurricanes and numerous other less intense storms, all of which have presented a risk to life and property. During this period, significant strides have been made to decrease statewide losses and expand focus on risk reduction, including a rise in new planning initiatives and funding opportunities. This expansion in new initiatives also brings potential unintended consequences including a lack of coordination in plan development, community outreach, data sharing and ultimately project prioritization. Research findings will explore opportunities for planning process alignment in order to implement comprehensive mitigation and preparedness strategies more efficiently and effectively between jurisdictions and across different risk-based plans. This workshop will also explore how new technologies have been utilized for engaging the public perception of risk and evacuation decision making.

WS107. What is Accessible Emergency Information? Why is it Critical? – Organized by John Vicenti

Thursday, May 11, 8:30 a.m. – 10:00 a.m. PBCCC 2B/C

Attendees will gain a clear understanding of the barriers encountered by people with sensory disabilities when emergency information alerts are not provided in accessible formats. Real life examples will be provided, such as, the impact an accessible “boil water” alert had when a mother (deaf) received the alert in ASL and learned not to use “un-boiled” tap water with the powder formula for her premature twins. This session is not only about people who need access to emergency information using the modality that best accommodates their disability, but also about the proven solutions that are being used today to ensure the access and inclusion for people who are deaf, blind, low vision, deaf and blind, hard of hearing as well as individuals with literacy challenges.

Interpreting provided by AQI Interpreting Services.

WS108. Mental and Behavioral Health Support for the Emergency Response Community Part 1 – *Organized by John Wilgis*

Thursday, May 11, 8:30 a.m. – 10:00 a.m.

PBCCC 2D

Emergency management and response personnel are critical to effective crisis management. There is a tremendous amount of work supporting the well-being, psycho-social, and emotional needs of victims and those impacted by disasters. There's a gap in providing the same level of care to those on the front lines and behind the scenes of emergency management and response.

This three-part, interactive, discussion-based workshop will provide stress first aid and resiliency tips, tactics, and tools that are available as well as, discuss crisis response team development and maintenance.

WS109. When the “Stuff” Starts to Pile Up: How to Navigate the Second Disaster – *Organized by Christy Rojas*

Thursday, May 11, 8:30 a.m. – 10:00 a.m.

PBCCC 2E

Inevitably following a disaster event, well-meaning do-gooders will start showing up with truckloads of stuff...prom dresses, prepared food, a gently used coffin (true story), and create what's known as the “disaster within a disaster”. Hurricane Ian was no exception. Piles of clothing lined communities trying to recovery from impacts and managing this was no easy task. Hear from those who were on the ground tasked in navigating the clean-up, both on a local level, from the non-profit perspective as well as national level partners. Know what to do next time donations start to pile up and how to turn stuff into goods.

WS110. Hero Helpers: Resources to Support Children Post Disaster – *Organized by Ian Guidicelli*

Thursday, May 11, 8:30 a.m. – 10:00 a.m.

PBCCC 2F

A consistent theme in all communities - regardless of the disaster type - is when and how to best talk to kids about disaster events. AshBritt has spent the past 3 years working with international experts specializing in childhood trauma and in supporting children post-disaster. Together, we developed tools to support children, specifically including children with intellectual and developmental disabilities. The panel will be moderated by award-winning children's book author and illustrator, Nathan Jarvis. Panelists will include Brittany Perkins Castillo, Board Member of the AshBritt Foundation and 4Girls Foundation; Sara Newhouse, FDEM Disaster Recovery Mental Health Coordinator; and a M.D./Sr. Representative from The University of Miami School of Medicine's Global Institute for Community Health and Development, which is actively involved in the recovery of local communities in the U.S., Bahamas and Haiti following recent hurricanes and earthquakes. The panel of experts will share best practices and tools for outreach to children in the wake of disaster and provide insights on how to incorporate tools that resonate with children and support parents, caregivers, and schools in your pre and post disaster work. The panel will also use case studies and inform the audience of communities of practice. Case studies will include kid-focused response tools from COVID-19, the 2022 KY floods, and Hurricane Ian that audience members can utilize, such as Family Emergency Preparedness Resources and the Hero Helpers Activity Book (for free!) in their communities.

WS111. Inclusive Disaster Planning with Public Librarians at The Table – *Organized by Kimberly Prosser*

Thursday, May 11, 8:30 a.m. – 10:00 a.m.

Hilton Coral A/B

The Stafford Act designates public libraries as essential disaster response facilities, complementing the Florida Statutes' recognition that public librarians may be asked to act as emergency responders during adverse events. How these requirements are implemented varies widely across the state, with some models showing particular efficacy. This session will review the state of public libraries' disaster planning, response, and recovery contributions, then explore effective collaborative planning practices to include public librarians and their facilities to community resiliency efforts. Session facilitators will actively engage participants in thinking about their own public library systems, disaster response strategy identification, and inclusive action planning and evaluation for their own localities.

WS112. Panel Discussion: The Psychology of Decision-Making During Hurricane Emergencies – *Organized by Pablo Santos*

Thursday, May 11, 8:30 a.m. – 10:00 a.m.

Hilton Coral C

Esteemed Social Scientist, Dr. Laura Myers (University of Alabama), will moderate a discussion among a panel of experienced panelists having diverse perspectives on how people process and/or respond to scientific/technological information and emergency messaging. Topics will be addressed that consider when good decisions are made and implemented within a community, and when they are not. Contextual aspects will be entertained in light of public testimonials and social science research findings regarding hurricane risk perceptions, understanding the psychology of risk and protective action decision making, good science communication strategies, and emergency messaging that leads to optimal protective action.

WS113. The Power of Collaboration: Hurricane Ian Response Done Right– *Organized by Lyle Briggs*

Thursday, May 11, 8:30 a.m. – 10:00 a.m.

Hilton Coral D/E

Duke Energy and Lee County Electric Cooperative joined forces to restore power quicker than expected to an island cut off from the mainland. A solid plan, local knowledge, vast disaster response experience, and an army of resources were the perfect ingredients to get the job done. This workshop includes tips to add to your preparedness playbook.

WS114. How to Become an Emergency Management Influencer - *Organized by John Jamason*

Thursday, May 11, 1:30 p.m. – 3:00 p.m.

PBCCC 1A

In the age of influencers, it's clear that anyone can be a brand. Everything posted online is representative of what we do and why we do it. For better or worse, emergency management is a brand. In this workshop we are helping you build your brand. From Tik Tok to Twitter, we are looking at how generations view social media and how to engage with everyone from Boomers to Gen Z. We want to help you create the best posts possible as well understand the analytics behind social media.

We will also show you how to get ahead of your social media. We look at how you can use social media analytics to guide your platform and content. How do you spice up your posts? How to get more people to engage? What is the best or worst way to write a post? How do I track how well my posts are doing? We talk about all this and more.

WS115. Individual Assistance–The Local Role in a Catastrophic Disaster – *Organized by Kimberly Prosser*

Thursday, May 11, 1:30 p.m. – 3:00 p.m.

PBCCC 1B/C

Disasters inherently affect people. As such, the critical ingredients to recovery are stable housing, employment, and social services; all things that support individuals and households. These critical categories are pillars of FEMA's Individual Assistance (IA) Program. However, the IA program and its benefits are less understood than other federal disaster programs like Public Assistance or CDBG-DR. In this workshop, participants will learn about the Individual Assistance suite of programs, disaster housing missions, voluntary agency coordination, local case work, and the local emergency management role at each level. This session will also present real-world examples from 2022 Hurricane Ian.

WS116. Politics, Elected Officials & Disasters – *Organized by Bill Johnson, RN*

Thursday, May 11, 1:30 p.m. – 3:00 p.m.

PBCCC 1D/E

This session will be led by Congressman Jared Moskowitz, who is the only Emergency Manager elected to Congress. Come learn best practices when dealing with elected officials at the state, local, and federal level. Representative Jared Moskowitz will go over what has made him successful and challenges he has experienced during disasters.

WS117. Sheltering Pets in Hurricane Ian – *Organized by Paul Johnston*

Thursday, May 11, 1:30 p.m. – 3:00 p.m.

PBCCC 1G/H/I

When disaster strikes, providing safe refuge for Florida residents necessitates providing safe refuge for the household pets. In 2022, the American Red Cross updated its guidance to view pet-friendly shelter as the norm from American Red Cross shelter operations. Hurricane Ian was the first opportunity for the Red Cross in Florida to implement this guidance. Working with community partners, Emergency Management, and state subject matter experts, the American Red Cross discovered successes and challenges, best practices and corrective actions that will guide our operations going forward. Join us as we discuss our experience and gather feedback on next steps.

WS118. How Infrastructure Dependency Analysis and Planning Can Mitigate Disaster Impacts – *Organized by Lee Mayfield*

Thursday, May 11, 1:30 p.m. – 3:00 p.m.

PBCCC 1L

This Workshop provides a wholistic view of Cybersecurity and Infrastructure Security Agency (CISA) regional and state hurricane response capabilities with an emphasis on dependency analysis. Examples and lessons learned from the Hurricane Ian preparation and response will be used to illustrate the broad spectrum of partnerships, both public and private, required to fully prepare and recover from a tropical event. Audience will leave workshop with a full understanding of the importance of identifying critical dependencies required for normal operations and how the cascading impacts of loss can delay restoration efforts. This workshop will address infrastructure resilience fundamentals, partnerships, analytic considerations, practical methods of assessing infrastructure dependencies, and resource mitigation measures.

WS119. The Impact of Hurricane Michael on the Mental Wellbeing of Area First Responders – *Organized by Jessica Geib*

Thursday, May 11, 1:30 p.m. – 3:00 p.m.

PBCCC 2A

Hurricane Michael struck Northwest Florida on October 10, 2018, with the greatest impacts felt from Panama City to Cape San Blas. However, first responders from across the panhandle region of Florida also felt deep effects, as they deployed to assist survivors. Research conducted through area universities highlights the associations among trauma, depression, anxiety, and suicidal risk to those responders employed in or near a disaster zone. Although the threat for these symptoms continues to remain high, treatment options are scarce and often disorganized. Through a grant from the Substance Abuse and Mental Health Services Administration, the 2nd Alarm Project was developed, focusing on four major components: leadership training, mental health literacy, free counseling services, and peer support training. Learn how research led to the development of this project and ways your community can collaborate.

WS120. Vulnerable Populations in Recovery - *Organized by Lee Mayfield*

Thursday, May 11, 1:30 p.m. – 3:00 p.m.

PBCCC 2B/C

This workshop will discuss the unique needs and attributes of various vulnerable populations throughout the recovery process. Populations to be discussed may include those experiencing homelessness, domestic violence victims, individuals with substance abuse/mental health needs, gender and sexual minorities, human trafficking victims, and people living in poverty. Specific topics within the recovery process will be discussed, including sheltering (short-term and long-term), implementation of community-wide programs (such as Disaster Case Management Programs), as well as complications that may arise with these populations utilizing FEMA or SBA programs.

WS121. Mental and Behavioral Health Support for the Emergency Response Community Part 2 – *Organized by John Wilgis*

Thursday, May 11, 1:30 p.m. – 3:00 p.m. PBCCC 2D

Emergency management and response personnel are critical to effective crisis management. There is a tremendous amount of work supporting the well-being, psycho-social, and emotional needs of victims and those impacted by disasters. There's a gap in providing the same level of care to those on the front lines and behind the scenes of emergency management and response.

This three-part, interactive, discussion-based workshop will provide stress first aid and resiliency tips, tactics, and tools that are available, as well as, discuss crisis response team development and maintenance.

WS122. Role of Women in Disaster Response and Recovery – *Organized by Eve Rainey*

Thursday, May 11, 1:30 p.m. – 3:00 p.m. PBCCC 2F

This workshop will offer an opportunity to hear from and dialogue with industry colleagues on how to continue to support women in our field. While the presentation centers around women, the core message is about building effective teams, strong industries, and resilient communities; it is about how effective EM requires the perspective and work of women and diverse groups. Panelists will share their perspective, experiences, and tools for maintaining our forward momentum engaging women in the industry. Panelists will be encouraged to pull from experiences throughout the pandemic and other emergency management response operations and to focus on the overall impact increasing women in the industry has on community planning, preparedness and response. Audience members will walk away with practical applications on increasing and sustaining women, and diversity in general, in their workplace.

WS123. Drone Program Development and Disaster Deployments in 2022 - *Organized by Melissa Rudd*

Thursday, May 11, 1:30 p.m. – 3:00 p.m. Hilton Coral A/B

This workshop is designed to provide an overview of the building, developing, operating, maintaining, and enhancing a multi-functional, flexible, and active drone program. The presentation will provide tips on seeking, building, and maintaining leadership engagement while highlighting the multiple benefits of building a comprehensive, devise, and multi-functional program that can be used as a tool for multiple types of missions. We will also discuss key elements to design and build a drone program, overcoming obstacles, equipment typing, Part 107 vs. COA, developing initial and ongoing training programs, and ensuring all equipment is maintained and updated regularly. The program will also provide example workflows, GIS mapping, and survey products. The presentation will provide multiple case studies and provide multiple real-world examples of how Drone operations can be a perfect tool that provides the desired results quicker, safer, and more efficiently. We will highlight standard workflows for daily drone operations followed by several examples of emergency response and recovery missions, damage assessment, and mitigation operations strategies. We will cover rapid needs assessment, GIS integration, and how the FSU UAS Team worked and coordinated operations with urban search and rescue and other response agencies following Hurricane Ian.

WS124. NWS Decision Support in High Impact Situations: From Preparedness to Recovery – *Organized by Pablo Santos*

Thursday, May 11, 1:30 p.m. – 3:00 p.m. Hilton Coral C

The workshop will highlight NWS Decision-Support Services (DSS) in tropical situations. Since community decision-making can be challenging, the NWS offers email and webinar briefings, as well as embedded deployments (in-person or virtual), to provide local expertise intended to support emergency managers in making informed weather-related decisions. Topics discussed will include:

The Value of DSS in Tropical Situations
DSS for All Event Phases
DSS Deployment Strategies
DSS & Coordinated Public Safety Messaging
Sharing Tropical DSS Success Stories

WS125. Team Rubicon - How we Get Stuff Done for you! – Organized by Ricardo Rosario

Thursday, May 11, 1:30 p.m. – 3:00 p.m. Hilton Coral D/E

We all know that there is a large price-tag attached to the response to natural and man-made disasters. Team Rubicon can help offset those costs.

This workshop presents an overview of the missions and services that Team Rubicon can offer communities after large disasters. We will talk about the key role that Team Rubicon played in the response to Hurricane Ian. In addition to that, we will also share our success stories and how our emergency management partners and the communities we served, benefitted from our expertise.

WS126. Florida National Guard Update – Organized by Melissa Rudd

Thursday, May 11, 3:30 p.m. – 5:00 p.m. PBCCC 1A

Florida National Guard presents leadership and planning tools on lessons learned from our active hurricane seasons to include our response to Hurricane Ian and Nicole. Senior leaders will discuss present methodologies, training and response guidelines for FLNG missions as well as best practices in response and leadership. Open discussion on planning materials and tools that are applicable across organizations like decision point timelines, battle rhythms, gap analysis products and more.

WS127. Using Data Analytics to Improve Response, Recovery and Mitigation Efforts - Organized by Kimberly Prosser

Thursday, May 11, 3:30 p.m. – 5:00 p.m. PBCCC 1B/C

Data usage in emergency management has exploded, but it can be overwhelming. This workshop is designed to demystify data analytics and provide helpful tools for emergency managers on a strategic and tactical level. Chat with end users from the National Hurricane Center as well as those who use the data to support local and state decision-making based on the latest data and its applications.

WS128. Do You Have a Swiss Army Knife in Your Community? – Organized by Christy Rojas

Thursday, May 11, 3:30 p.m. – 5:00 p.m. PBCCC 1D/E

CERT programs in Florida have grown over the years in their capabilities and are used throughout Florida in various roles and capacities. The panel will present and discuss how CERT is a force multiplier, and can be a gap filler in various situations, and how valuable CERT was during Hurricane Ian in various capacities. Regardless of the size of the organization, CERT can be a valued asset to all communities. This panel discussion will provide an overview of CERT's assistance during Hurricane Ian. The presenters will discuss donation warehouse management, traffic control, points of distribution, logistical support, and managing a citizen information line. The panel will highlight several Florida CERT programs and what makes them successful, and how CERT can integrate into your Mass Care Operations and Logistics Operations.

WS129. Recovery, Sheltering and Resident Transition – Organized by John Vicenti

Thursday, May 11, 3:30 p.m. – 5:00 p.m. PBCCC 1G/H/I

Emergency shelters are taking longer to close as clients face increasingly complex roadblocks and increasingly strained community resources. This workshop will present an overview of common activities of recovery sheltering, including roadblocks and transition needs and the engagement of governmental and community organizations in the process of supporting shelter residents transition from a shelter to more sustainable living solutions. The workshop will also explore the reality of a longer shelter operation, and what it means for the American Red Cross and local governments when residents are in shelters for three weeks or longer.

WS130. Community Lifelines Operationalized-Hurricane Ian – *Organized by Lee Mayfield*

Thursday, May 11, 3:30 p.m. – 5:00 p.m.

PBCCC 1L

The City of Cape Coral adapted the Community Lifelines concept from a reporting mechanism to an operational framework to address needs identified in the lessons learned from Hurricane Irma and an Emergency Operations Center (EOC) capability assessment. Further input from a functional exercise and a small no-notice 6-hour activation was incorporated into the redesign and allowed Emergency Management staff to successfully apply this structure during the response to Category 4 Hurricane Ian. The Community Lifelines based organization is tailored to the needs and capabilities of the city, integrates private sector partners, and fosters ownership of the process among response personnel. This workshop will discuss these concepts in an active EOC environment and lessons learned from a municipal government's perspective.

WS131. Interdisciplinary Approaches to Analyzing the Impacts of Hurricanes in the Southeastern U.S. and Caribbean – *Organized by Jessica Geib*

Thursday, May 11, 3:30 p.m. – 5:00 p.m.

PBCCC 2A

Researchers from the University of Central Florida engaged in multi-disciplinary practices, will present their analysis on varying impacts of Hurricane research. Topics of discussion include: transportation related challenges during hurricane evacuation, with a focus on Hurricane Ian; racial and income disparities in hurricane relief assistance using case studies over the past 20 years; administrative burdens faced by people evacuating to special needs shelters during Hurricane Irma; analyzation of individual real/personal property losses and social vulnerability characteristics; and solutions to provide clean, affordable, and resilient energy systems to at-risk communities focusing on the latest Atlantic hurricane seasons. This workshop will incorporate five 12-minute academic presentations with time for audience participation via question-and-answer period. Come prepared to engage with researchers and offer practitioner focused feedback.

WS132. Unpacking Successes in BRIC - *Organized by Rick Knowles*

Thursday, May 11, 3:30 p.m. – 5:00 p.m.

PBCCC 2B/C

This workshop will provide lessons learned from sub-applications selected for funding through the Building Resilient Infrastructure and Communities (BRIC) grant program's National Competition. We will dive into details about the selected projects and decisions that were made in the application process. In addition, Florida Division of Emergency Management (FDEM) Mitigation Non-Disaster Programmatic and Technical Review staff will explain key points to remember during the application development and submission process. These lessons learned and key points aim to optimize potential future sub-applications.

WS133. Mental and Behavioral Health Support for the Emergency Response Community Part 3 -*Organized by John Wilgis*

Thursday, May 11, 3:30 p.m. – 5:00 p.m.

PBCCC 2D

Emergency management and response personnel are critical to effective crisis management. There is a tremendous amount of work supporting the well-being, psycho-social, and emotional needs of victims and those impacted by disasters. There is a gap in providing the same level of care to those on the front lines and behind the scenes of emergency management and response. This three-part, interactive, discussion-based workshop will provide stress first aid and resiliency tips, tactics, and tools that are available, as well as, discuss crisis response team development and maintenance.

No doubt emergency managers and those we serve have faced unprecedented impacts over the last few years. COVID, civil unrest, active assailant, hurricanes; thus, creating a new wave of mental health challenges. Planning for response and recovery must take into account additional strategies in navigating these complex implications. Connect with the newly formed Statewide Emotional and Spiritual Care Committee as they share best practices, tools, and resources available for both responders as well as the communities you serve.

WS134. Hurricane Ian Response Through the Lens of Service and Guided by the Toyota Production System – *Organized by Christy Rojas*

Thursday, May 11, 3:30 p.m. – 5:00 p.m.

PBCCC 2E

SBP is a national long term disaster recovery organization that has grown since its founding, following Hurricane Katrina. SBP's footprint spans coast-to-coast, with rebuilding operations that have supported over 3,800 disaster-impacted families across 15 U.S. communities, including Puerto Rico and The Bahamas. With our network and partnerships including Toyota and AmeriCorps, SBP's Hurricane Ian response began long before the 2022 Hurricane Season. By mapping out vulnerable communities, and planning response efforts we were positioned to send deployment teams to provide damage assessments within days of Ian making landfall. AmeriCorps members continued to serve across the state - both in the field, and in the office to ensure we were prioritizing resources to the most under-resourced and vulnerable community members. We will share an understanding of the impact of AmeriCorps members during response and the power of collaboration through local partnerships. However, embedded in each of these topics and throughout SBP, the Toyota Production system guides and inspires our work. Specifically, we will focus on the culture of continuous improvement and Yokoten, which means if you do something well, share it. In this spirit we will share best practices and key actions organizations can take to begin building capacity and incorporating TPS values.

WS135. Are you FEPA certified? Let's Talk About the NEW Online Application Portal! – *Organized by Jeff Goldberg*

Thursday, May 11, 3:30 p.m. – 5:00 p.m.

PBCCC 2F

What does it mean to me? Why aren't you FEPA certified? Do you feel the application is too cumbersome? Well, you're in luck! During this interactive workshop, learn about the new, streamlined, online certification application portal as well as learn what kinds of emergency management certification opportunities there are (including Healthcare and Instructor) and what you need to do to accomplish this goal. Commissioners will give an overview of the new online submission portal while presenting on factors needed to succeed, then you will have the opportunity to ask Certification Commissioners on your specific questions regarding the application process and/or your application.

WS136. Disaster Intelligence Gathering and Analysis – *Organized by Melissa Rudd*

Thursday, May 11, 3:30 p.m. – 5:00 p.m.

Hilton Coral A/B

This workshop will introduce the concept of open-source intelligence to build and enhance situational awareness before, during and after a disaster. Participants will see workflows and techniques used in FSU's Disaster Intelligence and Analysis Laboratory (DIAL) to create intel products for dissemination to stakeholders.

WS137. Best Practices using HURREVAC for Hurricane Decision Making – *Organized by Pablo Santos*

Thursday, May 11, 3:30 p.m. – 5:00 p.m.

Hilton Coral C

The workshop will interactively explore the use of HURREVAC to support community decision-making during tropical storms and hurricanes. Participants will have the opportunity to apply select HURREVAC functions through the sharing of best practices as attributes of various wind and surge hazards are evaluated. Topics such as wind timing, deterministic vs. probabilistic projections, storm surge evacuation decision-making, etc., will be considered in application. This is not basic knobology training, but rather a series of demonstrations pointing out best practices in order to get the most out of the data within the common platform of HURREVAC.

- Overview: Storms, Conditions, Resources
- Wind-related decisions; leveraging wind-related tools, functions, and reports
- Surge-related decisions; leveraging surge-related tools, functions, and reports
- Conducting exercises and simulations within HURREVAC

WS138. Hurricane Ian PIO Deployment – *Organized by John Jamason*

Thursday, May 11, 3:30 p.m. – 5:00 p.m.

Hilton Coral D/E

After the devastating landfall of Hurricane Ian, many communities requested assistance with law enforcement, emergency management, fire rescue and public information. Many PIOs from around the state heeded the call from the State Deployment Team and headed to various locales across the west coast and interior of the state. We will speak with some of those PIOs and discuss their deployments and any takeaways they have. There will be ample time for questions and answers.

WS139. Municipal Emergency Management: Building a Culture of Preparedness – *Organized by Eve Rainey*

Friday, May 12, 8:30 a.m. – 10:00 a.m.

PBCCC 1A

The Municipal Emergency Management Challenge – having a successful Emergency Management (EM) Program when an EM Program isn't "required". The City of St. Petersburg, in collaboration with fellow municipal partners and Pinellas County, discuss building a culture of preparedness within your municipality to create a sustainable and valuable EM Program. Topics discussed in the workshop will include: generating buy-in with leadership and department stakeholders, showing your worth to elected officials, the importance of empowering your internal departments to have ownership over processes and procedures, and the necessity of building relationships with fellow municipalities and your County. Join us and bring your own strengths and struggles as we discuss the future of municipal emergency management!

WS140. Engaging with Your Human Services Department in All Phases of Disaster – *Organized by Jessica Geib*

Friday, May 12, 8:30 a.m. – 10:00 a.m.

PBCCC 1G/H/I

Responding to disaster comes down to people helping people- who better to include in your planning than your county Human Services/ Social Services Department? Hear from multiple county Human Services program experts on the creative and innovative ways they partner with their local Emergency Management. Discussion topics include homeless planning implications, utilizing behavioral and mental health data and resources, and engaging in short- and long-term recovery. Understanding the programs and services Human Services provides during blue sky can help strengthen and enhance grey sky response.

WS141. Florida Recovery Obligation Calculation Initiative (F-ROC) Applicant Assessment – *Organized by Lee Mayfield*

Friday, May 12, 8:30 a.m. – 10:00 a.m.

PBCCC 1L

This workshop introduces the Florida Recovery Obligation Calculation (F-ROC) Applicant Assessment and scoring methodology and provides an overview of the five relevant subcategories related to the Applicant Assessment. There will be a live demonstration of the Applicant Assessment and deep dives into the types of questions included. At the end of the workshop, applicants will know how to use the F-ROC technology, navigate through it and better understand the process.

WS142. Safe Sheltering of Vulnerable Populations in Hurricane-Pandemics: A Data-Analytical and Socio-Technical Decision-Making Framework – *Organized by Jessica Geib*

Friday, May 12, 8:30 a.m. – 10:00 a.m.

PBCCC 2A

Researchers will discuss their results and findings from a project funded through the National Science Foundation bringing together investigators from engineering and social science. Focus includes developing a data analytical and qualitative decision-making framework for safe sheltering of vulnerable populations during concurrently occurring hurricane-pandemics. Through the use of data analysis occurring during Hurricane Sally along with a Florida centric survey- preliminary findings will be discussed and presented. Conversations will measure challenges emergency management officials face during co-occurring hurricanes and pandemics, strategies for preparedness, and providing service to socially vulnerable populations.

WS143. How to Manage a HMGP Project Post-Award - Organized by Rick Knowles

Friday, May 12, 8:30 a.m. – 10:00 a.m.

PBCCC 2B/C

The purpose of this workshop is to provide clear information of all HMGP post-award project requirements, and identify potential challenges and solutions. Participants will leave this workshop with a better understanding of post-award responsibilities and requirements and learn about best practices to avoid potential challenges.

Post-award activities involve a significant amount of work, including the following: (1) Implementing the grant (state contracting, technical plan, procurement, bidding, permitting); (2) Monitoring the grant (construction/installation, schedules, Local compliance); (3) Reporting Progress (quarterly); (4) Financial requirements (requesting reimbursement, Cost adjustments); and (5) Closeout requirements (State Inspections/compliance, Financial and FEMA).

WS144. Medical Support for Vulnerable Populations Part 1 – Organized by John Wilgis

Friday, May 12, 8:30 a.m. – 10:00 a.m.

PBCCC 2D

For many years, communities have struggled to develop a consistent approach to providing emergency support during a large-scale, community evacuation scenario (such as a major hurricane) for medically fragile individuals where the level of care exceeds the austere environment of a special needs shelter (SpNS). This is the first of a two-part workshop series that provides an interactive discussion about providing the best care and assistance for medically fragile individuals and how local community providers can strengthen their emergency operations plans to offer assistance.

Part 2 will discuss opportunities for hospitals, other inpatient and residential providers, and clinics can better support the health care needs of medically fragile individuals during emergency response.

WS145. People with Access & Functional Needs Including Those with Disability in Emergencies & Disasters - Organized by Christy Rojas

Friday, May 12, 8:30 a.m. – 10:00 a.m.

PBCCC 2E

In emergencies or disasters, the whole community includes people with access and functional needs. By the nature of emergencies many resources and services people with access and functional needs use become unavailable. Emergency management, social services, medical personnel, public safety professionals, and victim or survivor advocates need to be prepared to provide a plan for inclusion, representation, and access for people with access and functional needs. This includes plans for services in emergencies to help bridge the gap. In this session we will explore lessons learned for people with disabilities (PWD), access and functional needs (AFN) in emergencies and disasters, evaluating shelter issues for people with access and functional needs in general population shelters, assessing methods of transitional housing, examining problems with effective communication and creating a network of contacts with service providers.

Interpreting provided by AQI Interpreting Services.

WS146. Implementing Diversity, Equity and Inclusion in Disaster Recovery – Organized by Eve Rainey

Friday, May 12, 8:30 a.m. – 10:00 a.m.

PBCCC 2F

Diversity, Equity, and Inclusion (DEI) is attracting more attention at the local, state, and national levels; however notable gaps still exist. We must work together to initiate change by focusing our efforts to include DEI concepts in all phases of emergency management by ensuring the inclusion of diverse stakeholders to represent the interests and experiences of vulnerable and underserved communities.

Join us for this informative workshop based on research conducted for the whitepaper titled, “Implementing Diversity, Equity, and Inclusion in Disaster Recovery” written by Clara Decerbo, David Fernandez, Rick Kovar, and David McIntire. Understanding a population’s

unique and diverse landscape, including its demographics, values, norms, community structures, networks, and relationships allows emergency managers to engage in practical actions to operationalize DEI concepts in all phases of emergency management.

WS147. Expanding Emergency Management Programs Into the K-12 – *Organized by Ed Kessler*

Friday, May 12, 8:30 a.m. – 10:00 a.m.

Hilton Coral A/B

This session will discuss the training, drills and variable issues that school districts in Florida need to be prepared for utilizing a true multi-hazard approach. We will discuss how State mandates regarding enhanced drills and awareness training bring teachers, administrators and support staff together for real world training and events. State mandates vs best practices vs real world events and the Orange County School District's perspectives.

WS148. Future Plans for the Suite of NWS Tropical Products - *Organized by Pablo Santos*

Friday, May 12, 8:30 a.m. – 10:00 a.m.

Hilton Coral C

The National Weather Service (NWS) is working to evaluate and update tropical products and services to ensure user understanding and the ability to take needed action based on the provided forecast and impact information. This effort is taking place through the Tropical Roadmap initiative and has utilized information from more than 50 different social science reports to propose changes to the tropical product suite. An imperative part of this process is to seek feedback from users, including emergency managers, early in this process to help drive the direction of these improvements. A few of the proposed changes include significant adjustments to the tropical cyclone wind speed probabilities products that may result in the need for re-calibration of decisional thresholds, moving the Storm/Surge Watch/Warning to a new product to allow for polygon-based alerting, transitioning from using the Hurricane Threat and Impact (HTI) graphics during a tropical event to using the Graphical Hazardous Weather Outlook that is also available on a routine basis, not just during tropical events, and simplifying the local watch/warning statement (TCV) that contains tropical cyclone hazards (tropical storm, hurricane and storm surge watches and warnings) and potential threat and impact information.

WS149. FDOT Hurricanes Ian and Nicole Response-Our Story – *Organized by Andrew Sussman*

Thursday, May 11, 1:30 a.m. – 3:00 p.m.

PBCCC 2E

The Florida Department of Transportation is more than just a roads and bridges department. We would like to highlight the multitude of response and recovery efforts delivered during response to the impacts of Hurricanes Ian and Nicole. We will begin with our pre-landfall preparedness and staging activities in support of local, State and private sector and go through and highlight some of our delivered projects and on-going efforts. We also want to highlight our partnerships with local, state, and private sector to ensure successful delivery of these projects in record breaking timelines to expedite the recovery of heavily impacted communities.

WS150. Post Ian and Nicole Flooding – *Organized by Eve Rainey*

Friday, May 12, 10:30 a.m. – Noon

PBCCC 1A

Hurricanes Ian and Nicole were both intense rain events affecting much of Florida causing massive flooding. This workshop will present information on two specific scenarios both of which highlight the importance of partnerships for expertise and tools to predict, prepare for and respond to wide-spread flooding events. The capabilities and expertise of the United States Army Corps of Engineers and Florida Water Management Districts, and how to access these resources, will be emphasized using these real-world experiences to encourage their inclusion in local emergency management plans and procedures.

WS151. What Happens When the Government Needs Help? – *Organized by Christy Rojas*

Friday, May 12, 10:30 a.m. – Noon

PBCCC 1B/C

As the impact from major disasters continues to grow, public expectation for assistance increases, however government resources often are limited in scope and scale specifically when considering survivor needs. Where can those impacted go for help? Including

whole communities in your recovery planning is critical- these partners include private, public and not-for-profit. However, do you really understand the value the NGO's can bring to your community? Discussion topics include engaging your local VOAD, calculating the value of service-both volunteer hours and resources, developing non-profit partner MOU's, and understanding what each of these organizations bring to the table.

WS152. Atlantic Basin Hurricane Season Prediction/Outlook – *Organized by John Wilson*

Friday, May 12, 10:30 a.m. – Noon PBCCC 1D/E

Colorado State University's initial Atlantic hurricane forecast for the 2023 season will be presented and discussed in detail.

WS153. Why is There a Reporter in the Lobby? – *Organized by John Jamason*

Friday, May 12, 10:30 a.m. – Noon PBCCC 1G/H/I

There are few things more uncomfortable than facing the media unprepared. This program explores the best ways to interface with the media and how to avoid a host of pitfalls. This session will help even the most camera-shy participants to feel comfortable facing media.

WS154. Hurricane Ian Logistics: Best Practices & Lessons Learned – *Organized by Lee Mayfield*

Friday, May 12, 10:30 a.m. – Noon PBCCC 1L

Hurricane Ian brought significant damage to Southwest Florida and other areas across the state. This included storm surge levels that left barrier islands unreachable by land and bridge, leading emergency managers to utilize alternative means of moving resources into impacted jurisdictions. This discussion will center around the unique Hurricane Ian logistics mission and how key agencies worked together to find solutions in a challenging situation. Panel members will also outline new information requirements needed when making resources requests through the state.

WS155. Student Academic Research Presentations – *Organized by Jessica Geib*

Friday, May 12, 10:30 a.m. – Noon PBCCC 2A

This session will feature selected research presentations from students in Emergency and Disaster Management related academic courses or programs. Participants are selected through an application process. A panel discussion with key emergency management stakeholders and practitioners will follow each presentation. All are encouraged to attend to engage with future emergency managers and current researchers. Student scholarship recipients should also plan to attend this session. Research posters will be on display near the registration table throughout the week. Audience participation is encouraged.

WS156. The Basics of Special Needs Shelter Support – *Organized by John Wilgis*

Friday, May 12, 10:30 a.m. – Noon PBCCC 2B/C

This workshop will provide a basic overview of special needs shelter (SpNS) operational support. The interactive workshop will discuss operations, staff and staff roles, intake forms and documentation, check in procedure for clients and staff, staffing models, supplies and supply management, command and control of shelter operations, emergency response considerations, mutual aid, and other important topics for those managing and working in the SpNS environment.

WS157. Medical Support for Vulnerable Populations Part 2 – Organized by John Wilgis

Friday, May 12, 10:30 a.m. – Noon

PBCCC 2D

For many years, communities have struggled to develop a consistent approach to providing emergency support during a large-scale, community evacuation scenario (such as a major hurricane) for medically fragile individuals where the level of care exceeds the austere environment of a special needs shelter (SpNS).

WS158. Florida Agency for Health Care Administration: eTools for Emergencies – E-PLUS & HFRS – Organized by John Wilgis

Friday, May 12, 10:30 a.m. – Noon

PBCCC 2E

This workshop will highlight two systems the Agency for Health Care Administration (AHCA) uses primarily in times of emergency events and response, the Emergency Patient Look-Up System (E-PLUS) and the Health Facility Reporting System (HFRS).

E-PLUS utilizes data from Florida's Health Information Exchange. Through the web-based E-PLUS system, there are three distinct services for emergency response: access to patient records in alternative care sites or shelters; data collection for individuals staying at an alternative care site; and the ability to assist in family reunification. This session will also provide information related to HFRS. This system is an online status tracking and availability tool for reporting information regarding licensed health care facility emergency status, beds, planning, or operations, as required by Section 408.821(4), Florida Statute. Licensees providing residential or inpatient services must utilize HFRS.

WS159. Debris Management 101 for Emergency Managers - Organized by Eve Rainey

Friday, May 12, 10:30 a.m. – Noon

PBCCC 2F

Debris piles don't get picked up with the speed of Amazon deliveries, and citizen expectations for debris collection can be a big stress point for city and county government officials. The Debris Management 101 workshop educates on debris operations and the scope of services required for physical recovery using FEMA Public Assistance category A funds. Debris Management 101 emphasizes the importance of maintaining an affective public-private partnership between contractors and government, with an emphasis on local government. The panel will include 1-2 debris contractors, a monitoring firm, and city or county government representatives. The conversation will discuss pre-positioned contracts and post-event contracts for debris removal, using actual sample contracts from recent events to ground the conversation in real world examples and tools. The conversation will also discuss key operations phases, giving audience members an overview of what they need to know as a foundation for disaster debris removal. Sample contracts, "cheat sheets"/ 101 guides, and case studies will be used and provided to the audience.

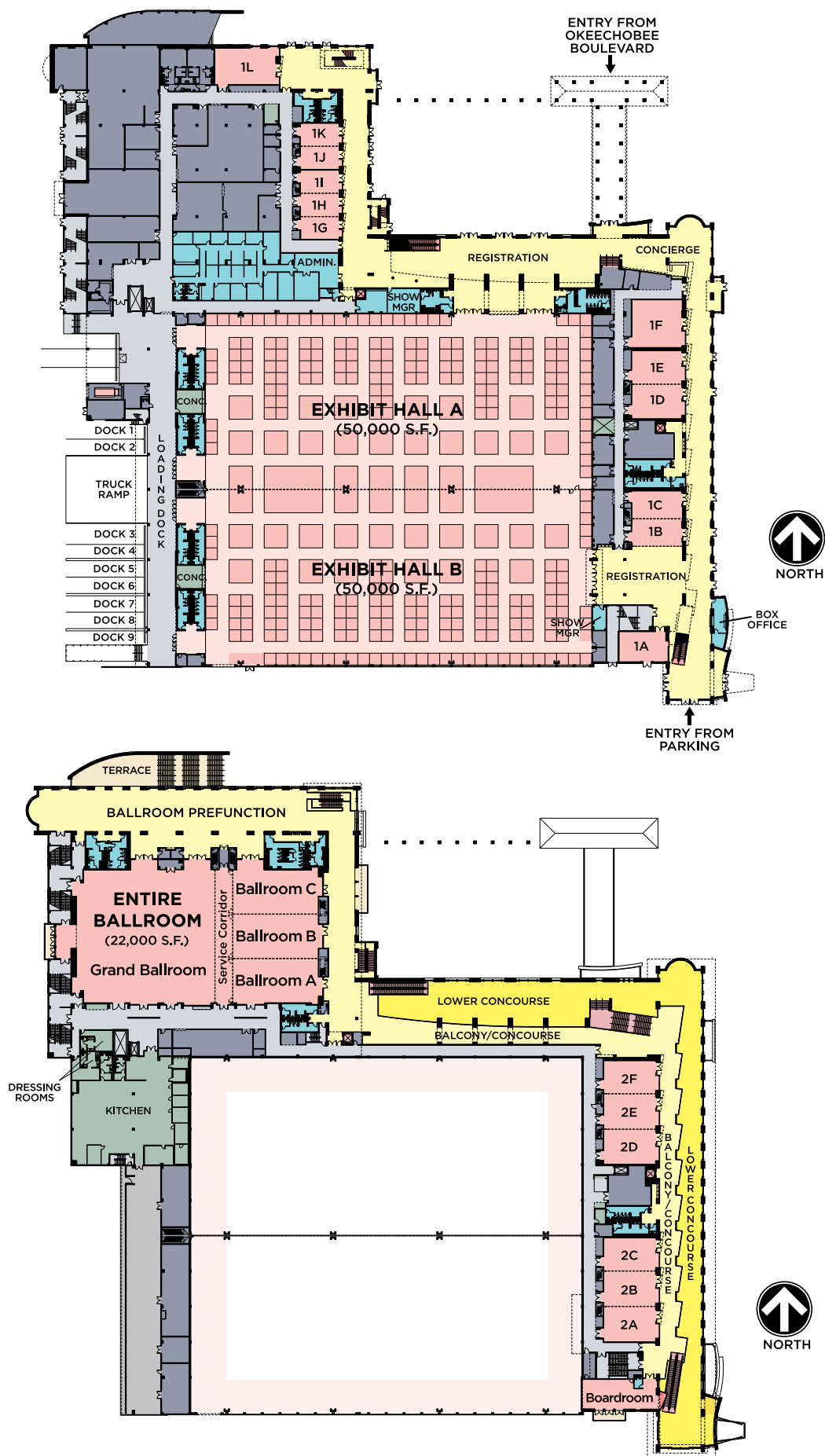
WS160. Orange County Public Schools-Hurricane Ian Debrief – Organized by Ed Kessler

Friday, May 12, 10:30 a.m. – Noon

Hilton Coral A/B

This session will discuss the Orange County Public Schools response to Hurricane Ian. What action steps were taken to prepare, respond and recover from the devastating storm. How did the district handle the flooding at one of its elementary schools and the decision process, which resulted in that school being collocated for the remainder of the school year.

Palm Beach County Convention Center



GrantWorks

BUILDING OUR NATION'S COMMUNITIES

ARE YOU PREPARED FOR LONG-TERM DISASTER RECOVERY?

Visit GrantWorks' booth to learn about our extensive disaster recovery solutions and have a cigar rolled by Certified Master Cuban Roller Fernando Morales while you're there!

Our Services Include:

- Housing Programs
- Construction Management
- Broadband Consulting
- Grant & Program Management
- Disaster Recovery & Mitigation
- Community & Economic Development



info@grantworks.net

FL HQ: 101 E. College Ave, Tallahassee, FL 32301

COME VISIT US!
"MY CIGAR ROLLER"
BOOTHS 818-822



BE A MASTER OF DISASTER WITH AN M.A. IN DISASTER MANAGEMENT

Apply for Fall 2023 | Application deadline: June 1, 2023

From top-ranked academic programs to collaborative partnerships with domestic and international agencies, **Florida International University** is a South Florida anchor institution and a solutions center for growing crises and disasters.

The **Master of Arts in Disaster Management** at FIU's Academy for International Disaster Preparedness is a 30-credit graduate program featuring coursework in emergency management and international humanitarian assistance. FIU developed this program in response to the growing frequency of natural and human-induced disasters. Graduates of the program have pursued careers in private and public sectors across global, federal, state, and local levels.

The program's curriculum develops and improves the skills of disaster practitioners and those interested in entering the exciting field of disaster management. Instead of a traditional thesis, both fully online and face-to-face students complete a multi-day disaster field operations exercise. The exercise tests students' abilities to respond to a large-scale international disaster.

- 11-month graduate program
- Among the lowest tuition rates at FIU (Financial aid and scholarships are available)
- Face-to-Face or fully Online classes
- Flexible program for busy schedules
- Internships and post-graduation job employment opportunities

DID YOU KNOW?

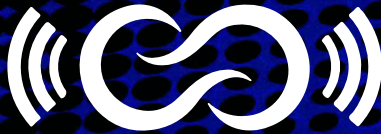
Classes take place in FIU's Emergency Operations Center (EOC)—**only 11%** of universities in the U.S. have an active EOC.



For more information, contact:
Dulce Suarez, PhD
Graduate Program Assistant Director
T: 305-348-0451 | E: dboza@fiu.edu

Learn more at
academy.fiu.edu





Infinity Communications
Group

FOR A FULL LISTING OF OUR
SERVICES AND 16 LOCATIONS,
PLEASE SEE OUR WEBSITE AT

GOCINFINITY.COM

EMERGENCY COMMUNICATIONS AND POWER



TOWER BUILDS AND REPAIR



EMERGENCY FUELING

INFINITY COMMUNICATIONS HEADQUARTERS
5201 INTERNATIONAL DRIVE, DURHAM, NC 27712
INFO@INFINITYCOMMLLC.COM
(919)-797-2334

NOTES

850-426-2327

418 W Garden St, Pensacola, FL, 32502

PMO@capacitypath.com



Capacity Path

Brighter. Stronger.

PRESS RELEASE

Date Release:
2022-2023

Florida Makes a Real Impact and Difference for Residents and Responders in the aftermath of Hurricane Ian

State Sponsored Mental Health Team provided 8000+ Crisis Stabilization and Support Sessions throughout the worst impacted barrier islands and SWFL counties

In the aftermath of Hurricane Ian's devastating landfall on September 28, 2022, the State of Florida faced a multitude of challenges, including widespread distress and immense pressure among impacted residents and emergency responders. Amidst the urgent needs for medical care, search and rescue operations, public safety, shelter, and utilities repair, the Florida Division of Emergency Management recognized the critical importance of addressing the mental health needs of those affected by the disaster. To meet this pressing need, they engaged Capacity Path, a highly-specialized team of crisis stabilization practitioners, to provide an Emergency Response Team (SERT-MHW) for Mental Health and Wellness for this response.

Capacity Path, a Florida-based disaster mental health and first responder resilience organization, deployed Crisis Mental Health specialists trained in advanced methods of crisis stabilization, crisis intervention, and peer support. They provided mobile field units of relief and respite care over the eight-week operational period, serving thousands of residents and more than fifty responder agencies. This historic moment in emergency response was not left to chance or volunteer responders alone but was addressed structurally and systematically, recognizing the critical need for mental health support in disaster response efforts.

Capacity Path's Founder and Clinical Director, Amie Leigh, expressed her gratitude and pride in the team's efforts. "We are beyond honored and humbled to be able to serve not only the residents but also the responders working this disaster, to Tallahassee and all of Lee and Charlotte and every responding agency," she said. "If we can stand up the local community and not shy away from the human factors issues, if we can engage local therapists as well, that is the strongest and best solution-based approach to bringing rapid relief and repair after something like this." Capacity Path's success in responding to Hurricane Ian is a testament to the importance of prioritizing mental health in disaster response efforts and the critical role that "human mitigation" holds in emergency management efforts.



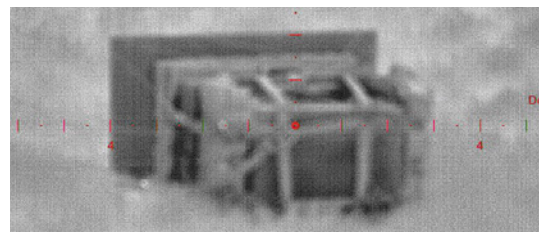


Come see us in Booth 806
Watch our gear pushed out
the back of a C-130!

Pickup your Raffle Tickets!

FIRST RESPONDERS

If you are first in, you need dependable, portable power that can go where you go, and is ready when you are. The United States Military trusts our gear, you should too.



The PortaMaxPower lineup of Solar Sentinel portable solar generators are:

- *Day In Day Out Sustainable – Zero Supply Chain Dependency*
- *Operate Com's, Satellite Uplinks, Computers*
- *Hospital Equipment, Ventilators, Monitors, Blood Bank Refrigeration*
- *Command Centers, Workstations*
- *FLNG ADVON Trucks, DECON Tents*
- *LED Traffic Lights/Intersections*
- *Safe, Silent, No Fumes*
- *No Maintenance, No Operating Cost*



Designed and Built
in the USA.

Reach out to us directly at **militarysupport@PortaMaxPower.com** with your mission's power requirements. If our gear can help, we'll tell you straight. If it can't, we'll tell you that too. We offer equipment not shown on this website and build custom gear as well, so please reach out and let us know what you need.



www.PortaMaxPower.com

www.portamaxpower.com