



# AGENDA

## 1:30 PM - 3:00 PM

- Welcome and overview
- Introduction to NOAA's Office of Response and Restoration, and our resources

## 3:00 PM - 3:30 PM BREAK

## 3:30 PM - 5:00 PM

- Ready, Set, Respond Game Introduction
- Game Play
- Report Out & Wrap Up





# **GROUND RULES**

---

**Make sure you sign in**

**Be present & respectful**

**Take scenarios at face value**

**Please fill out evaluation form before leaving**



# **TRAINING OBJECTIVES**

- 1. Understand the interconnected complexities of post-storm environmental response**
- 2. Become familiar with NOAA's Office of Response and Restoration (OR&R) resources**
- 3. Apply knowledge using a scenario-based, interactive game**



# Introductions

Tell us your.....

Name

Affiliation

One hurricane impact (3 words or less)





# Introduction to NOAA's Office of Response and Restoration (OR&R)



# NOAA's Office Structure



National  
Marine  
Fisheries  
Service

**NMFS**



National  
Weather  
Service

**NWS**



Oceanic &  
Atmospheric  
Research

**OAR**



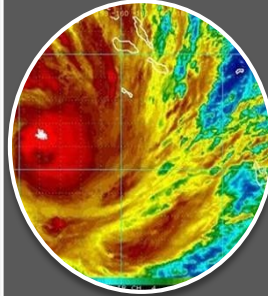
National  
Ocean  
Service

**NOS**



Office of  
Marine &  
Aviation  
Operations

**OMAO**



National  
Environmental,  
Satellite, Data,  
& Information  
Service

**NESDIS**

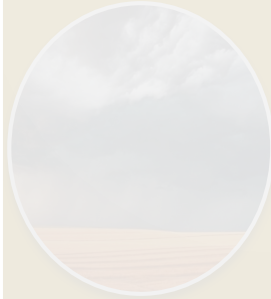


# NOAA's Office Structure



National  
Marine  
Fisheries  
Service

NMFS



National  
Weather  
Service

NWS



Oceanic &  
Atmospheric  
Research

OAR



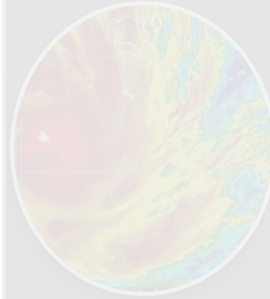
National  
Ocean  
Service

NOS



Office of  
Marine &  
Aviation  
Operations

OMAO



National  
Environmental  
, Satellite,  
Data, &  
Information  
Service

NESDIS



# National Ocean Service

<b>US Integrated Ocean Observing Systems</b>	<b>Office for Coastal Management</b>	<b>Office of National Marine Sanctuaries</b>	<b>National Centers for Coastal Ocean Science</b>
<b>National Geodetic Survey</b>	<b>Center for Operational &amp; Oceanographic Products &amp; Services</b>	<b>Office of Coast Survey</b>	<b>Office of Response &amp; Restoration</b>



# National Ocean Service

National Geodetic Survey	Office of Coast Survey	Office for Coastal Management	Office of National Marine Sanctuaries
US Integrated Ocean Observing Systems	Center for Operational & Oceanographic Products & Services	National Centers for Coastal Ocean Science	<b>Office of Response &amp; Restoration</b>

Disaster Preparedness Program

Emergency Response Division

Assessment and Restoration Division

Marine Debris Program

Business Operations Division





[response.restoration.noaa.gov](https://response.restoration.noaa.gov)

Photo: NOAA

# Our Mission

---

To protect and restore ocean and coastal resources from the impacts of oil, chemicals, marine debris, and other hazards.

We provide expert leadership, training, and time-critical services that benefit the environment, the public, and the economy.

- Disaster preparedness
- Oil and chemical spill response
- Damage assessment and restoration
- Marine debris prevention, removal, and research



# Working Across the Nation

-  OR&R Main Offices
-  Assessment & Restoration Division (ARD)
-  Emergency Response Division (ERD)
-  Marine Debris Program (MDP)
-  Disaster Preparedness Program (DPP)



# Florida's Regional OR&R Contacts



OR&R Main Offices



Assessment & Restoration Division (ARD)



Emergency Response Division (ERD)



Marine Debris Program (MDP)



Disaster Preparedness Program (DPP)



**Jessi James Barry**  
Gulf Coast Marine  
Debris Regional  
Coordinator

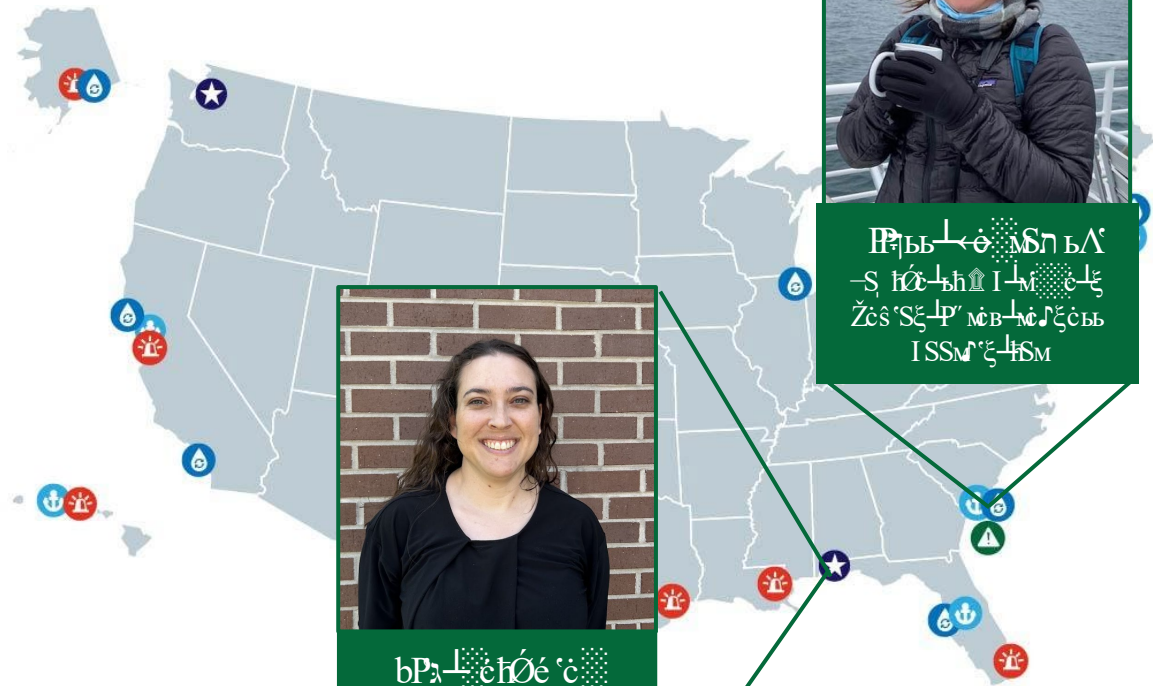


Ἰσσοῦ ἑρ  
-Σ ἰοῦ ἑρ  
Σοῦ Μῆ Ζεῦ Σξ Ἰ  
ΙΣΣΜ ἑρ



# Florida's Regional OR&R Contacts

-  OR&R Main Offices
-  Assessment & Restoration Division (ARD)
-  Emergency Response Division (ERD)
-  Marine Debris Program (MDP)
-  Disaster Preparedness Program (DPP)



ᐃᑦᑲᑦᑲᑦᑲᑦ ᑲᑦᑲᑦᑲᑦ  
ᑲᑦᑲᑦᑲᑦᑲᑦ ᑲᑦᑲᑦᑲᑦᑲᑦ  
ᑲᑦᑲᑦᑲᑦᑲᑦ ᑲᑦᑲᑦᑲᑦᑲᑦ  
ᑲᑦᑲᑦᑲᑦᑲᑦ

ᐃᑦᑲᑦᑲᑦᑲᑦ ᑲᑦᑲᑦᑲᑦ  
ᑲᑦᑲᑦᑲᑦᑲᑦ ᑲᑦᑲᑦᑲᑦᑲᑦ  
ᑲᑦᑲᑦᑲᑦᑲᑦ ᑲᑦᑲᑦᑲᑦᑲᑦ  
ᑲᑦᑲᑦᑲᑦᑲᑦ



# Florida's Regional OR&R Contacts



OR&R Main Offices



Assessment & Restoration Division (ARD)



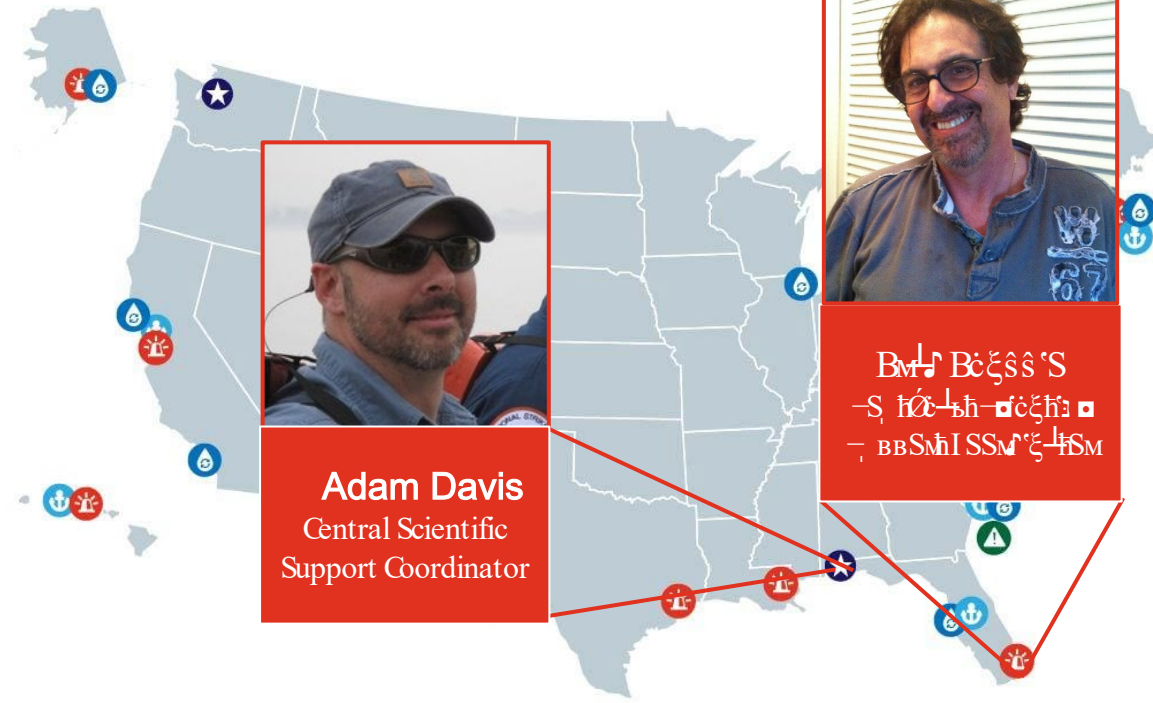
Emergency Response Division (ERD)



Marine Debris Program (MDP)



Disaster Preparedness Program (DPP)



**Adam Davis**  
Central Scientific  
Support Coordinator



**Ben Boessens**  
South Florida  
Regional Coordinator



# Disaster Preparedness Program (DPP)

---

To ensure the National Ocean Service (NOS), partners, and coastal communities are able to effectively prepare for, respond to, and recover from all hazards, including coastal disasters.

- Training
- Exercises and drills
- Regional support
- Lessons learned
- Planning and tool development

Disaster Response Center in Mobile, AL



# Emergency Response Division (ERD)

Under the National Contingency Plan, NOAA is responsible for providing scientific support to the federal on-scene coordinator (FOSC) for oil and hazardous material spills.

## Scientific Support Coordinators (SSCs)

- Serve as science advisor to USCG supporting operational decisions
- Facilitate coordination with Natural Resource Trustees
- 24/7 response support to spill events, as well as support for preparedness activities such as training, exercises, and contingency planning



Photos: NOAA





# Marine Debris

- Regional coordination with local, state and regional partners
- Funding for community-based removal, prevention through outreach and education, and scientific research projects
- Lead shoreline monitoring and detection efforts
- Help coastal communities prepare for, respond to, and recover from debris-generating incidents through expertise, products, and trainings





# Assessment & Restoration

Uses science to hold polluters accountable for hazardous waste pollution, oil spills, and ship groundings and restore waterways across the United States.

- NOAA Damage Assessment, Remediation, and Restoration Program (DARRP) and creation of Damage and Restoration Plans (DARP)
- Develop cutting-edge assessment techniques
- Measure impacts to habitats and natural resources
- Study economic impacts of pollution
- Lead and coordinate Natural Resource Trustee teams





# Business Operations

---

- Provide exemplary business and mission support functions
- Budget/Finance Team assists in planning, executing, and obligating funds
- Contracts Management
- Employee Resources Team
- Administrative Support
- IT Security and Development Support
- Cost Recovery NRDA Support



Photo: Public Domain



# OR&R Resources





# Hurricane Impacts

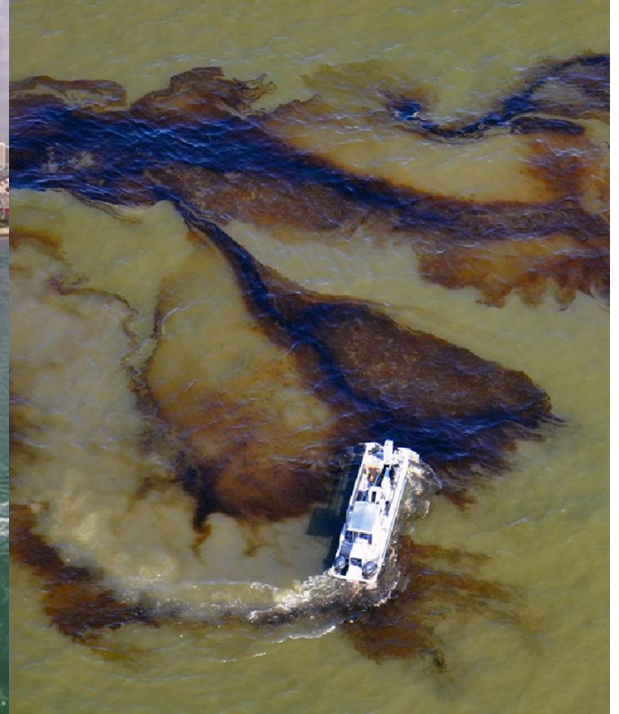
## Natural Resources



## Economy



## Public Health & Safety



# Environmental Hazards



## Pollution





## Marine Debris



# OR&R Resources

## Experts

**EXPERT** 





**Emergency Response  
Division - Scientific  
Support Coordinator**

Special Ability  
While attached, all **DATA**  
cards on this hazard  
remove 1 additional  
damage

Base Damage Removal: -1

## Products

**PRODUCT** 





**Abandoned &  
Derelict Vessels  
Info Hub**

Special Ability  
While attached to a  
hazard located in a coral  
reef or seagrass bed,  
removes 1 additional  
damage for this hazard

Base Damage Removal: -1

## Data

**DATA** 

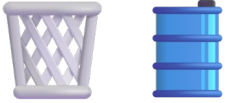


**ERMA**

Special Ability  
While attached, any  
**PRODUCT** card on this  
hazard removes 1  
additional damage

Base Damage Removal: -2

<b>Experts</b>	<b>Products</b>	<b>Data</b>
Emergency Response Division Scientific Support Coordinator	Marine Debris Emergency Response Guide	ERMA
Disaster Preparedness Program Regional Preparedness Coordinator	Debris Removal Best Management Practices	CAMEO
Marine Debris Program Regional Coordinator	Abandoned & Derelict Vessels Info Hub	GNOME Suite
	Shoreline Assessment Job Aid	

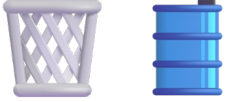


# Emergency Response Division Scientific Support Coordinator (SSC)

—I Ъ BMDY'Jc Ъ □ cξhñ □ Ъ BBSMhS hōc R, JcMPP  
Sξϕ □ cξc □ SSM'ξ- hSMϕh'V □ Pϕ D- I S- Ъ hC, -M  
Smb" ϕ SMS'P-ξ J ϕ -M S, Ъ θ - hCM- P Ъ B' Pϕ  
'ξ □ P J'ξs hM A □ SM ϕ S Jc B- ϕ c Ъ S, m c Ъ - hM Ъ A  
-ξ J Ъ BSh ϕ S m c □ Ъ hξs hōs, sō; z -ظ

Sōc ϕ - P S Ъ BBSMhBMcB- m c Jc c Ъ B - h'v' h'c Ъ  
Ь □ O- Ъ c ϕ c m c Ъ c Ъ - Sξhξs c ξ □ B P ξ ξ 'ξ s  
hM-ξ 'ξ s ظ





# Disaster Preparedness Program Regional Preparedness Coordinator (RPC)

- **Build relationships** with regional partners and stakeholders
- **Provide awareness and knowledge** of NOAA services and products that could assist in emergency planning and response
- **Create opportunities** to enhance preparedness and readiness including workshops, exercises and training activities.



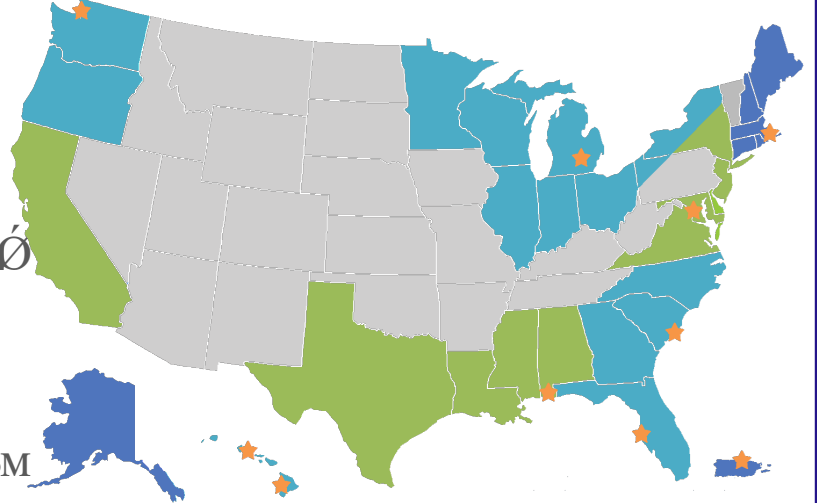


# Marine Debris Program Regional Coordinator

- B, P, M, P, H, S, G, B, O, B, V, B, n, H, O, M, S, S, G, P, B, M, G, C, M, B, L, G, M, B, L, A, C, O, S, P, C, M, B

- —, B, B, S, M, H, O, L, M, G, C, M, B, G, H, H, V, C, B, G, P, M, G, S, M, S, S, G, P, H, S, G, B, P, G, B, G, M, S, V, M, C, H, C, O, G, P, S, M, G, S, G, M, C, H, S, V, P, M, G, V, C, G, H, S, G, M, B, C, M, O, S, M, G, H, B

- S, M, G, S, M, B, B, S, G, B, C, M, S, V, M, C, V, M, H, P, S, M, G, B, C, M, S, G, H, C, O, G, P, B, B, B, S, M, H, C, B, S, M, C, B, G, S, M, G, S, M, G, S, M, H, S, M, H, S, G, B, S, V, C, M, H, S, G, B



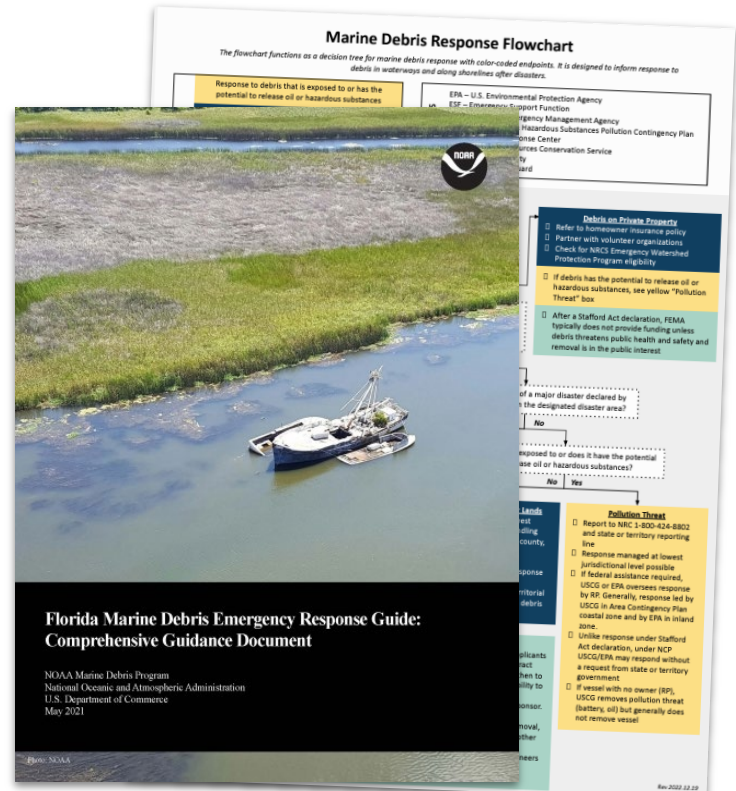


# Marine Debris Emergency Response Guide

Documents aimed at **improving preparedness** and facilitating a coordinated, well-managed, and immediate response to debris incidents.

These efforts work to **outline existing response structures** at the local, state, and federal levels, capturing all relevant responsibilities and existing procedures into one guidance document for easy reference.

<http://marinedebris.noaa.gov/resources/>



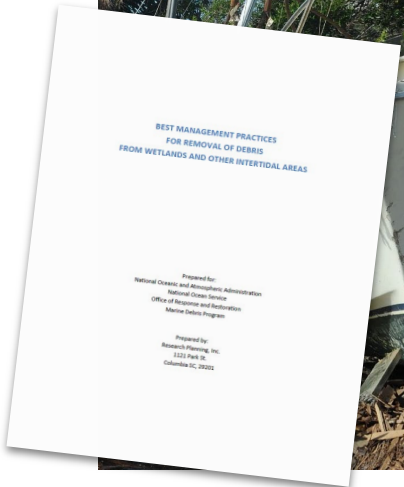
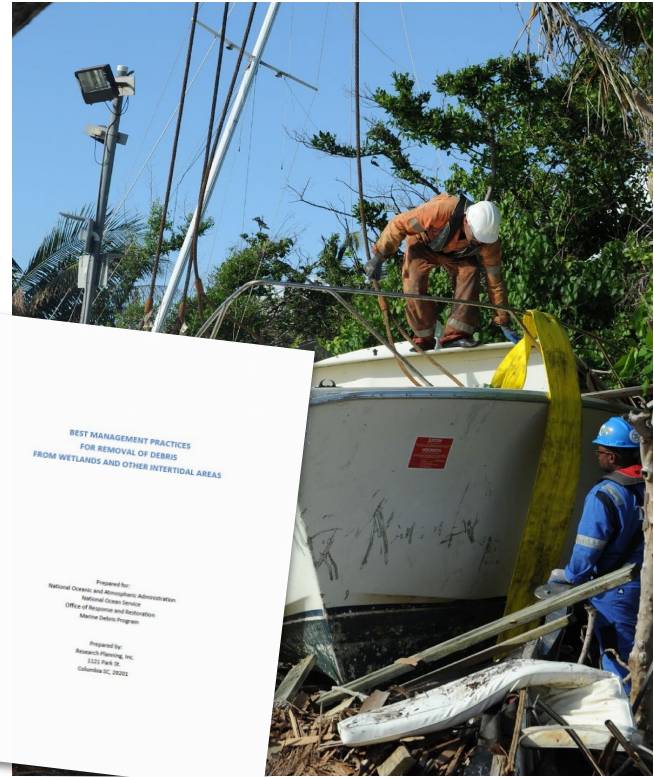


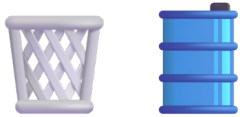
# Debris Removal Best Management Practices

ξ ΣΥΣΤΗΜΑΤΑ ΣΥΛΛΕΞΗΣ ΚΑΙ ΑΠΟΚΑΘΑΡΙΣΗΣ  
ΑΠΟΡΡΙΜΜΑΤΩΝ ΚΑΙ ΑΝΕΛΕΥΣΗ ΑΠΟΡΡΙΜΜΑΤΩΝ  
ΕΝΤΟΣ ΤΗΣ ΑΡΧΑΙΑΣ ΚΑΙ ΝΕΩΝ ΑΝΕΛΕΥΣΕΩΝ  
ΕΝΤΟΣ ΤΗΣ ΑΡΧΑΙΑΣ ΚΑΙ ΝΕΩΝ ΑΝΕΛΕΥΣΕΩΝ

ΑΠΟΚΑΘΑΡΙΣΗ ΚΑΙ ΑΠΟΚΑΘΑΡΙΣΗ  
ΑΠΟΡΡΙΜΜΑΤΩΝ ΚΑΙ ΑΝΕΛΕΥΣΗ ΑΠΟΡΡΙΜΜΑΤΩΝ  
ΕΝΤΟΣ ΤΗΣ ΑΡΧΑΙΑΣ ΚΑΙ ΝΕΩΝ ΑΝΕΛΕΥΣΕΩΝ

[www.environmental.gov.gr](#)



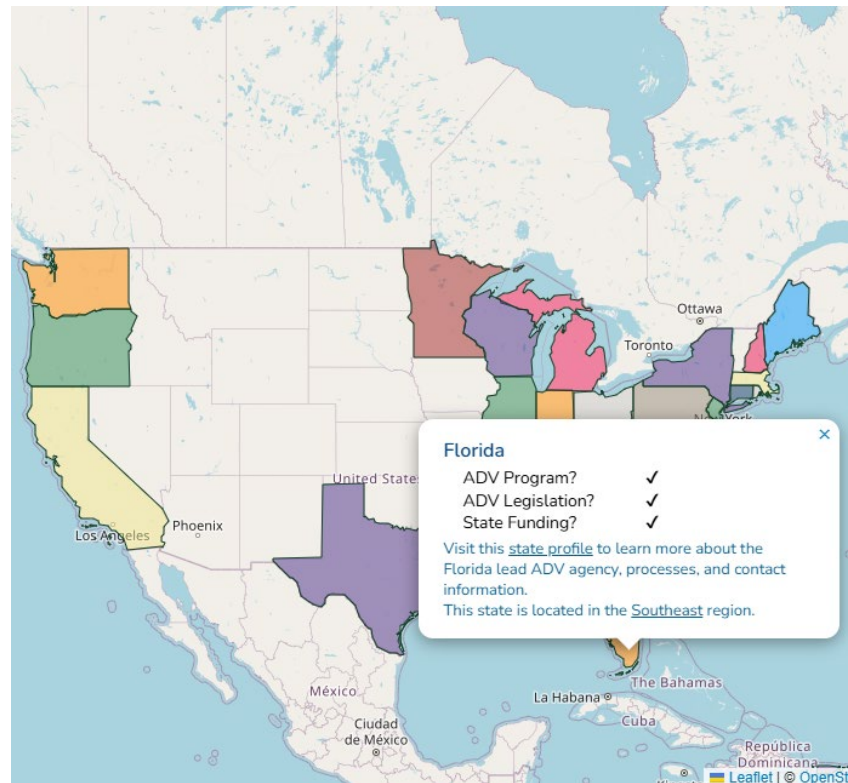


# Abandoned and Derelict Vessels (ADV) InfoHub

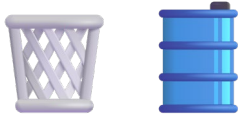
A central source of information regarding ADVs, for coastal states and territories.

Use the **interactive map** to read an outline of how ADVs are handled in each jurisdiction, including details about relevant **contact information, funding, legislation, and publications.**

<http://marinedebris.noaa.gov/resources/>



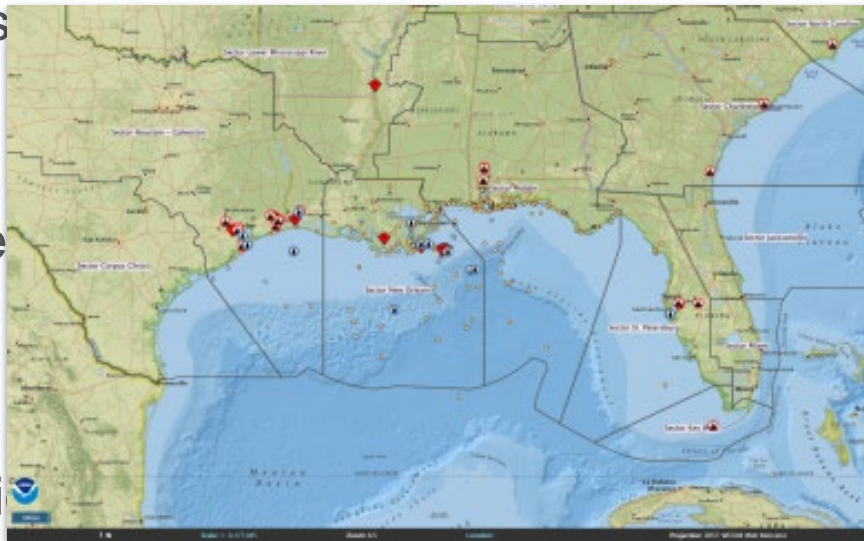




# Environmental Response Management Application (ERMA)

An online mapping tool that integrates both static and real-time data in a centralized format

It provides environmental resource managers with the data necessary to make informed decisions for environmental response, damage assessment and recovery/restoration



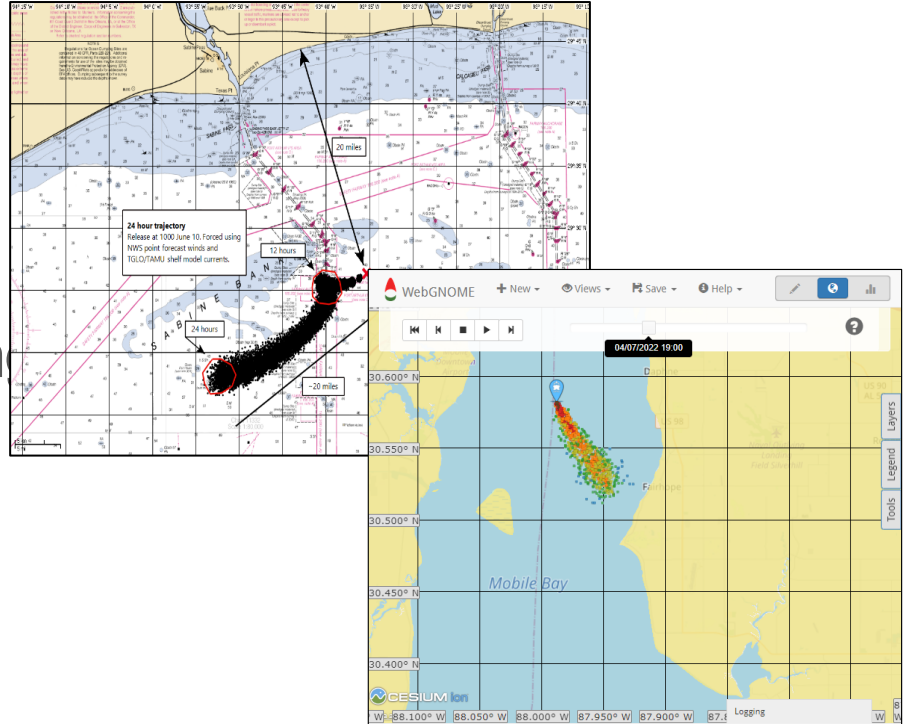
<https://erma.noaa.gov/gulfofamerica>





# General NOAA Operational Modeling Environment (GNOME)

- Set of modeling tools for predicting trajectory of pollutants
- Active spill or **scenario planning**
- **WebGNOME** provides user friendly interface



# ESI Map Overview

























# Environmental Sensitivity Index (ESI) Maps

## ESI Shoreline and Habitat Ranking

		1B) Exposed, Solid Man-Made Structures
		2A) Exposed Wave-Cut Platforms (Bedrock/ Mud/Clay) 2B) Exposed Scarps and Steep Slopes (Clay)
		3A) Fine to Medium Grained Sand Beaches 3B) Scarps and Steep Slopes (Sand)
		4) Coarse-Grained Sand Beaches
		5) Mixed Sand and Gravel Beaches
		6A) Gravel Beaches
		6B) Riprap
		7) Exposed Tidal Flats

		8A) Sheltered Scarps (Bedrock/Mud/Clay)
		8B) Sheltered, Solid Man-Made Structures
		8C) Sheltered Riprap
		9A) Sheltered Tidal Flats 9B) Vegetated Low Banks
		10A) Salt and Brackish Water Marshes
		10B) Freshwater Marshes
		10C) Swamps
		10D) Scrub and Shrub Wetlands
		10F) Mangroves

# Environmental Sensitivity Index (ESI) Maps

تصنيف الحساسية البيئية

1B: Exposed Solid Man-Made Structures



# Environmental Sensitivity Index (ESI) Maps

قۇملۇق ۋە ئۆسۈملۈك  
ئۆزگىرىشچانلىقى

ئۆسۈملۈك ۋە  
قۇملۇق ئۆزگىرىشچانلىقى



# Environmental Sensitivity Index (ESI) Maps

b ñ h P L B Ω L B B

## SHORELINE HABITATS

1A) Exposed, Rocky Shores	8A) Sheltered Scarps (Bedrock/Mud/Clay)
1B) Exposed, Solid Man-made Structures	8B) Sheltered, Solid Man-made Structures
1C) Exposed, Rocky Cliffs w/Boulder Talus Base	8C) Sheltered Riprap
2A) Exposed, Wave-Cut Platforms (Bedrock/Mud/Clay)	8D) Sheltered, Rocky, Rubble Shores
2B) Exposed Scarps and Steep Slopes (Clay)	9A) Sheltered Tidal Flats
3A) Fine- to Medium-grained Sand Beaches	9B) Vegetated Low Banks
3B) Scarps and Steep Slopes in Sand	10A) Salt- and Brackish-water Marshes
4) Coarse Grained Sand Beaches	10B) Freshwater Marshes
5) Mixed Sand and Gravel Beaches	10C) Swamps
6A) Gravel Beaches	10D) Scrub-Shrub Wetlands
6B) Riprap	10E) Mangroves
7) Exposed Tidal Flats	



ESI maps are available through ERMA

# Biological Resources

---



# Biological Resources

---

- Rare, threatened, and endangered species
- Sensitive or ecologically valuable species
- Concentration areas
- Areas where sensitive life-history stages or activities occur

## Biological Legend:



### Birds



Diving



Gull/Tern



Passerine



Pelagic



Raptor



Shorebird



Wading



Waterfowl



### Reptiles/Amphibian



Alligator



Other Reptile/Amphibian



Turtle



### Invertebrates



Bivalve



Crab



Lobster/Crayfish



Shrimp



### Terrestrial Mammals



Small Mammal



### Marine Mammals



Dolphin



Manatee



Whale



### Fish Summary



Fish



### Benthic



Coral/Hardbottom Reef



Submerged Aquatic  
Vegetation



Threatened/Endangered/  
Species of Special Concern

# Biological Resources

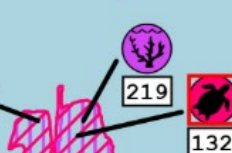
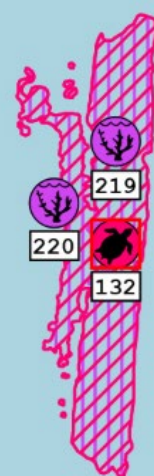
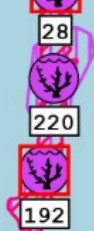
## INVERTEBRATE:

RAR#	Species	S	F	Concentration	Mapping Qualifier	Monthly Presence (Jan-Dec)	Spawning	Eggs	Larvae	
46	Calico scallop			Common	General Distribution	J F M A M J J A S O N D	Jan-Apr	-	-	Mar-Jun
47	Calico scallop			Uncommon	General Distribution	J F M A M J J A S O N D	Jan-Apr	-	-	Mar-Jun
55	Caribbean spiny lobster			-	General Distribution	J F M A M J J A S O	Apr-Oct	-	Apr-Oct	-
117	Blue crab			-	General Distribution	J F M A M J J A S O N D	Dec-Sep	-	-	Jan-Dec
	Quahog			Common	General Distribution	J F M A M J J A S O N D	-	-	-	-
118	Quahog			Uncommon	General Distribution	J F M A M J J A S O N D	-	-	-	-

## MARINE MAMMAL:

RAR#	Species	S	F	Concentration	Mapping Qualifier	Monthly Presence (Jan-Dec)	Mating	Calving	Pupping	Molting
38	Bottlenose dolphin			-	General Distribution	J F M A M J J A S O N D	-	-	-	-
163	West Indian manatee	T	T	-	General Distribution	J F M A M J J A S O N D	-	-	-	-
174	North Atlantic right whale	E	E	-	General Distribution	J F M A	-	-	-	-
178	Atlantic spotted dolphin			-	General Distribution	J F M A M J J A S O N D	-	-	-	-
	Bottlenose dolphin			-	General Distribution	J F M A M J J A S O N D	-	-	-	-
	Fin whale	E	E	Rare	General Distribution	J F M A M	-	-	-	-
	Humpback whale			-	General Distribution	J F M A M	-	-	-	-
	Rough-toothed dolphin			-	General Distribution	J F M A M J J A S O N D	-	-	-	-

# Benthic (Purple)



## BIOLOGICAL RESOURCES:

### BENTHIC:

RAR#	Species	S	F	Concentration	Mapping Qualifier	Monthly Presence (Jan-Dec)
28	Acropora spp.	T	T	-	Vulnerable Occurrence	J F M A M J J A S O N D
80	Deep sea coral			Likely	General Distribution	J F M A M J J A S O N D
81	Deep sea coral			Potential	General Distribution	J F M A M J J A S O N D
192	Mountainous star coral	T	T	-	Vulnerable Occurrence	J F M A M J J A S O N D
219	Coral patch reef			-	Vulnerable Occurrence	J F M A M J J A S O N D
220	Aggregate reef			-	Vulnerable Occurrence	J F M A M J J A S O N D
221	Hardbottom reef			-	Vulnerable Occurrence	J F M A M J J A S O N D
237	Seagrass			Patchy	High Ecological Value	J F M A M J J A S O N D
238	Johnson's seagrass	T	T	Present	Vulnerable Occurrence	J F M A M J J A S O N D
243	Johnson's seagrass	T	T	Potential	Vulnerable Occurrence	J F M A M J J A S O N D
	Seagrass			Patchy	High Ecological Value	J F M A M J J A S O N D

-  **Benthic**
-  Coral/Hardbottom Reef
-  Submerged Aquatic Vegetation
-  Threatened/Endangered/Species of Special Concern

# Reptiles (Pink)

## HERPETOFAUNA:

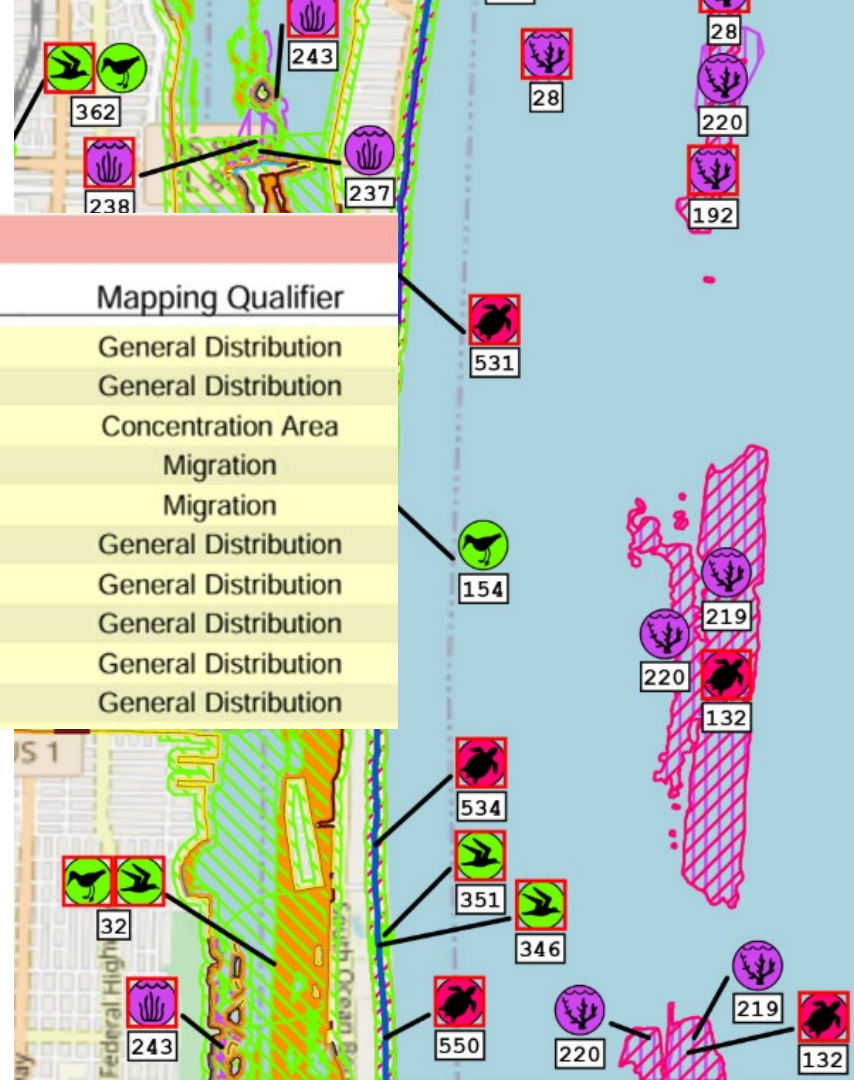
RAR#	Species	S	F	Concentration	Mapping Qualifier
106	Green sea turtle	T	T	-	General Distribution
	Loggerhead sea turtle	T	T	-	General Distribution
132	Hawksbill sea turtle	E	E	High	Concentration Area
166	Green sea turtle	T	T	High	Migration
	Loggerhead sea turtle	T	T	High	Migration
177	Green sea turtle	T	T	-	General Distribution
	Hawksbill sea turtle	E	E	-	General Distribution
	Kemp's ridley sea turtle	-	-	-	General Distribution
	Leatherback sea turtle	-	-	-	General Distribution
	Loggerhead sea turtle	-	-	-	General Distribution

### Monthly Presence (Jan-Dec)

J	F	M	A	M	J	J	A	S	O	N	D
J	F	M	A	M	J	J	A	S	O	N	D
J	F	M	A	M	J	J	A	S	O	N	D
				M	J	J	A	S	O		
		M	A	M	J	J	A	S			
J	F	M	A	M	J	J	A	S	O	N	D
J	F	M	A	M	J	J	A	S	O	N	D
J	F	M	A	M	J	J	A	S	O	N	D
J	F	M	A	M	J	J	A	S	O	N	D

### Reptiles/Amphibians
























-  Alligator
-  Other Reptile/Amphibian
-  Turtle



# Environmental Sensitivity Index (ESI) Maps

## Human-Use Resources

Use	Examples
Resource Extraction	Mining, Aquaculture, Oil Facilities
Cultural	Archaeological and Historic
Operations	Access Points, Boat launches
Recreation	Beaches
Management	Reserves, Sanctuaries

	Access		Marine Sanctuary
	Airport		National Forest, National Park, or Nature Conservancy
	Aquaculture		Park
	Boat Ramp		Recreational Beach
	Coast Guard		Recreational Fishing
	Commercial Fishing		Sampling Site
	Dive Site		Surfing
	Historical Site		Water Intake
	Hoist		Wildlife Refuge
	Management Area		Alert
	Marina		Management Area Boundary
			Mile Marker

# Environmental Sensitivity Index (ESI) Maps

## Resources at Risk Report



Report generated using ESI maps

Common tool in spill response

Identify shorelines, habitats,  
species, and human-use features  
potentially affected by an event or  
action

# ESI Map Exercise





# ESI Map Exercise

ثك ١-θ ١- ПЬ ÓSṁ Pξ̇ ١- ђ ВСЬ ВМЬС̇ξ̇ ħ

ثك ž Ó ħ ħ Óṁ ١- ħ̇ ξ̇ ١- ξ̇ ١- ξ̇ ŝ̇ ١- ṁ ١-

١- и ١- ħ̇ Б В С ђ С Ъ ١- ṁ В М Ъ С̇ ξ̇ ħ̇ ξ̇ ξ̇ ١- ṁ ÓSṁ

١- ħ̇ ṁ ξ̇

ثك ž Ó ħ ħ Óṁ ١- ħ̇ ξ̇ ١- ξ̇ ١- ξ̇ ŝ̇ ١- ṁ ١- М Ъ

١- ṁ В М Ъ С̇ ξ̇ ħ̇ ξ̇ Ω ١- ħ̇





# ESI Map Exercise

3. What threatened and endangered birds present in May?

" 'B 'ξŝ B I S ŷ ċ M θ ċ M □ L ξ S 7 Ъ ċ M □ h □ Ō ċ M ≠ ċ L Ъ ħ  
ħ ċ M ξ - B P L □ Λ Ъ Λ ' θ θ ċ M



# Ready, Set, Respond



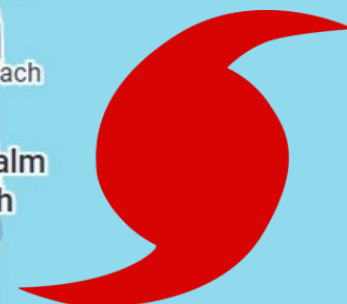




# Objective

ż SMΛ SPŁ SMh'ycP, hS m'θ S'z'c 1\_b θ, □Ó  
ćξ'z' Mξθ ćξh'P'1-θ 1\_s'c 1\_b B S\_b'b' P'c 7, 6'ξ's  
—Z'Z' m'c' S, m'c' b' 1\_ξ' n' c' s'θ'ξ's h'c' ćξ'c' h'  
SR'c' 1\_□Ó' c'□\_b' 'S'ξ' ć' R' S' m'c' m'c' b' S'ξ' n' 'ξ's'ظ

h'h'c' ćξ' n' SR' 1\_θ' 'ξ' h'c' b' h'c' h'c' 1-θ n' o's' o'1\_b  
ć'P'θ 'ξ' 1\_h'c' h'c' h'c' θ S\_b'h'c'ξ'z' Mξθ ćξh'P'1-θ 1\_s'c  
n' h'c' s' h'c' b' R'h'ξ's h'c' 'm'c'ξ'c'm'ξ' 7 1\_ξ'Λ n' 'ξ' b'



# Ready, Set, Respond

The game takes place in 3 phases:

**READY:** Set-up and overview

**SET:** Preparedness actions

**RESPOND:** Strategy and resource allocation

# Game Over: Discussion



# Discussion Questions:

ظت é Sη η'η η S, mhc-θ ηc□ηc Sξ ⊥\_bhmhcš ηξ z ⊥\_b 'hcRc□η'zcξ

ظت S'η hóc IS□h'Sξ SRhóc Ó\_λ ⊥\_M\_b Sξ hóc b-ñθ ⊥\_B ⊥\_Rc□hη S, M  
SzcM ⊥\_P\_bhmhcš ηξ

ظت é Sη ÓcBR Pη cMc η S, MBMcB ⊥\_Mcηξ c\_b\_b BCMAξ

4. How did the escalation events affect your team's decisions or outcomes?

# **TRAINING OBJECTIVES**

- 1. Understand the interconnected complexities of post-storm environmental response**
- 2. Become familiar with NOAA's Office of Response and Restoration (OR&R) resources**
- 3. Apply knowledge using a scenario-based, interactive game**





# Wrap-Up

- ±c̣ ȳc̣ ȳPṢ ȳθ̣ c̣ θ̣ ȳf̣c̣Ṃ ȳḄ Ṣξ̣  
ȳṢ, Ṃḥ ȳP̣c̣
- " ȳP̣c̣ ȳ ȳPṢ, ḥḥc̣ c̣ȳ ȳP̣ ȳḥṢξ̣  
ȳSṂ c̣ȳSṂ ȳṢ, ȳP̣c̣
- Ω̣ȳc̣ ȳ, Ṃc̣ ȳṢ, Ø̣ȳc̣ ȳPṢṚȳṢ, Ṃ  
c̣ȳṢξ̣ṣ̂ ξ̣ṣ̂ȳ

ȳȳ ȳP̣ ȳḥṢξ̣ ȳSṂ





Thank You!