

---

# Unit 8:

# Coordination with the IMT



**FEMA**

Visual 8.1

# Unit Terminal Objective

---

**Describe the interactions with the Command and General staff and other ICS functional areas that are required to perform the Division/Group Supervisor's job.**



**FEMA**

Visual 8.2

# Unit Enabling Objectives

---

- **Describe what information needs to be exchanged, why the information is important and, with whom to exchange information.**
- **Discuss how to successfully coordinate relations within the incident management organization.**
- **Describe ways to obtain support for Division/Group resources from the Planning, Logistics, and Finance/Administration sections.**



**FEMA**

# Information Communication

---

**The early organization and establishment of lines of communication with resources assigned to the Division or Group is critical.**



**FEMA**

# Information Communication (Cont.)

---

## Sharing:

- From you to your assigned resources
- From your assigned resources to you
- From you to adjoining Divisions, Groups, and resources
- From you to the OSC or OPBD
- From the OSC or OPBD to you



**FEMA**

# Interactions with Command and General Staff (1 of 20)

---

- Inherent to the tasks of the Division/Group Supervisor.
- The ability to do this effectively will determine your success as a Division/Group Supervisor.



**FEMA**

# Interactions with Command and General Staff (2 of 20)

---

**Division/Group Supervisor and Incident Commander. The Incident Commander provides:**

- **Broad direction**
- **Policy interpretation**



**FEMA**

# Interactions with Command and General Staff (3 of 20)

---

**Division/Group Supervisor with Safety Officer and/or assistants:**

- Risk assessment and mitigation.
- Accident or incident investigations.
- May act as a second set of eyes and ears for the DIVS.



**FEMA**

# Interactions with Command and General Staff (4 of 20)

---

## Division/Group Supervisor and Planning:

**Most of the interactions will be with subordinate staff rather than the Planning Section Chief.**



**FEMA**

# Interactions with Command and General Staff (5 of 20)

## Division/Group Supervisor and Planning (Cont.):

## Resources Unit Leader (RESL):

- Maintains current incident resource status
- Assembles Task Forces and Strike Teams
- Prepares the ICS Form 204 - Assignment List

ASSIGNMENT LIST (ICS 204)				
1. Incident Name:		2. Operational Period: Date From: _____ Date To: _____ Time From: _____ Time To: _____		3. Branch:
4. Operations Personnel: Name _____ Contact Number(s) _____ Operations Section Chief: _____ Branch Director: _____ Division/Group Supervisor: _____				Division: Group: Staging Area:
5. Resources Assigned:			Contact (e.g., phone, pager, radio frequency, etc.)	Reporting Location, Special Equipment and Supplies, Remarks, Notes, Information
Resource Identifier	Leader	# of Persons		
6. Work Assignments:				
7. Special Instructions:				
8. Communications (radio and/or phone contact numbers needed for this assignment): Name/Function _____ Primary Contact: Indicate cell, pager, or radio (frequency/system/channel) _____ / _____ / _____ / _____				
9. Prepared by: Name _____ Position/Title: _____ Signature: _____				
ICS 204	IAP Page _____	Date/Time: _____		



FEMA

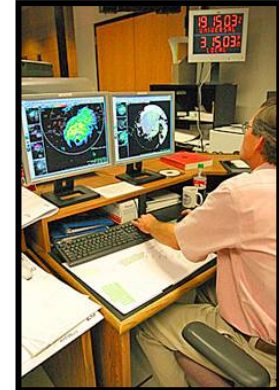
# Interactions with Command and General Staff (6 of 20)

---

## Division/Group Supervisor and Planning (Cont.):

### Situation Unit Leader (SITL):

- Incident prediction and probabilities
- Maps and photo services
- Incident perimeter
- Situation status
- Weather
- Summary and status of accomplishments



**FEMA**



# Interactions with Command and General Staff (8 of 20)

---

## Division/Group Supervisor and Planning (Cont.):

### Demobilization Unit Leader (DMOB):

- Preparation of Demobilization Plan
- Check-out procedures



**FEMA**

# **Interactions with Command and General Staff (9 of 20)**

---

## **Division/Group Supervisor and Planning (Cont.):**

### **Technical Specialists**

- **Meteorologist**
- **Training Specialist**
- **Rehabilitation Specialist**
- **Urban Search and Rescue**
- **Hazardous Materials Specialist**
- **Seismologist**



**FEMA**

# Interactions with Command and General Staff (10 of 20)

---

## Division/Group Supervisor and Logistics:

- Interaction is critical for accomplishment of the job.
- Most interactions will take place with subordinate staff rather than the Logistics Section Chief.



**FEMA**

# Interactions with Command and General Staff (11 of 20)

---

## Division/Group Supervisor and Logistics (Cont.):

### Supply Unit Leader (SPUL):

- Establishes times, methods by, and locations where supplies are to be delivered and returned
- Tactical items
- Logistical items (including rations)



**FEMA**

Visual 8.16

# **Interactions with Command and General Staff (12 of 20)**

---

## **Division/Group Supervisor and Logistics (Cont.):**

### **Ground Support Leader (GSUL):**

- **Support and transportation vehicles**
- **Crew transports**
- **Tactical vehicles and support**
- **Fueling, maintenance, and repairs**
- **Transportation Plan**



# Interactions with Command and General Staff (13 of 20)

---

## Division/Group Supervisor and Logistics (Cont.):

### Communications Unit Leader (COML):

- Resolves communications problems.
- Maintains, repairs, and replaces radios.
- Coordinates message center operations.



**FEMA**

# Interactions with Command and General Staff (14 of 20)

---

## Division/Group Supervisor and Logistics (Cont.):

### Facilities Unit Leader (FACL):

- **Base and Camp establishment, maintenance, and organization**
- **Site location and layout**
- **Security**



**FEMA**

# Interactions with Command and General Staff (15 of 20)

---

## Division/Group Supervisor and Logistics (Cont.):

### Food Unit Leader (FDUL):

- **Caterer (contract administration)**
- **Meals**
- **Kitchen**
- **Potable water**



**FEMA**

# **Interactions with Command and General Staff (16 of 20)**

---

## **Division/Group Supervisor and Logistics (Cont.):**

### **Medical Unit Leader (MEDL):**

- **Paramedics, EMTs, and other medical staff**
- **Preventative care**
- **First aid treatment**
- **Evacuations**
- **Comp-for-injury documentation**



# Interactions with Command and General Staff (17 of 20)

---

**Division/Group Supervisor and Finance/Administration**

**Most interactions will take place with subordinate staff rather than the Finance/Administration Section Chief.**



**FEMA**

Visual 8.22

# Interactions with Command and General Staff (18 of 20)

---

## Division/Group Supervisor and Finance/Administration

### Time Unit Leader (TIME):

- Personnel time recording
- Equipment time recording



**FEMA**

# **Interactions with Command and General Staff (19 of 20)**

---

**Division/Group Supervisor and Finance/Administration (Cont.):**

**Procurement Unit Leader (PROC):**

- **Procurement and contract administration**
- **Information on contracts and agreements**
- **Payment documents**



**FEMA**

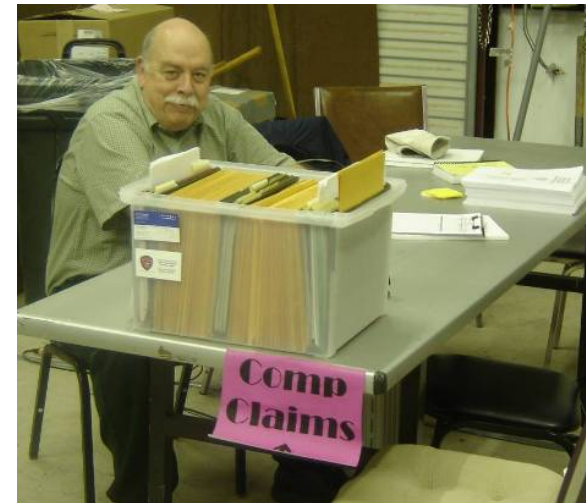
# Interactions with Command and General Staff (20 of 20)

---

**Division/Group Supervisor and Finance/Administration (Cont.):**

**Compensation/Claims Unit Leader (COMP):**

- **Comp-for-injury documentation processing**
- **Written authority for persons requiring medical treatment**
- **Claims investigation and documentation**



**FEMA**

# Objectives Review

---

**What data would the DIVS exchange with:**

- **The Resources Unit Leader?**
- **The Safety Officer?**

**What support would the DIVS seek from:**

- **The Planning Section?**
- **The Logistics Section?**
- **The Finance/Administration Section?**



**FEMA**

# Review Course Expectations

---



**FEMA**

Visual 8.27

# Final Exam

---



**FEMA**

Visual 8.28