



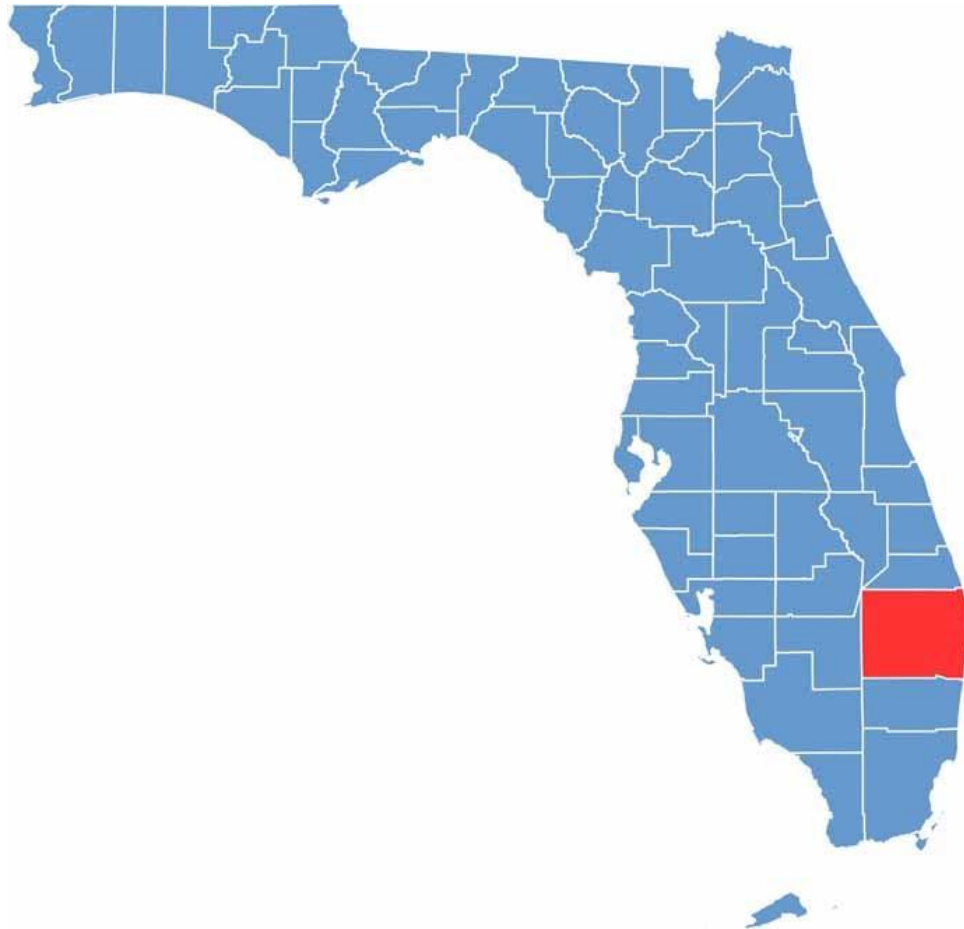
One TEAM, One Voice

# Introductions



Mary Blakeney, Director Palm Beach County Division of Emergency Management  
Ed Chase, Intergovernmental Affairs Director Palm Beach County  
Richard Radcliff, Executive Director Palm Beach County League of Cities

# Palm Beach County



Population: 1,492,191

Households: 589,594

Municipalities: 39

Demographics: 74.1% white, 24.2% Hispanic, 20.1% black

Median income \$76,066/household

Major employers: Palm Beach County School District, Palm Beach County Government, Tenet Healthcare, NextEra Energy, Florida Atlantic University

Largest employer: Palm Beach County School District

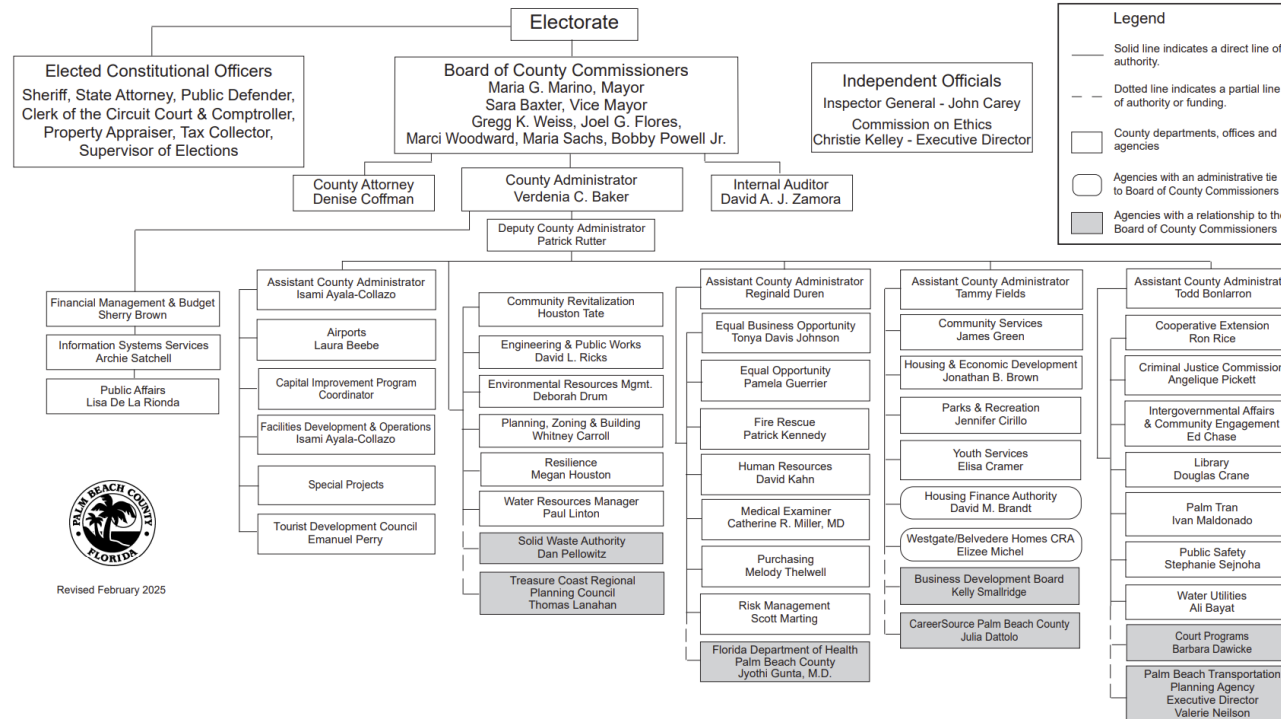
Infrastructure: Palm Beach International Airport, Port of Palm Beach, Several General Aviation Airports, FEC, CSX, FDOT/Tri-Rail, South Central Florida Express

Emergency Management Staffing: 28 (includes 24/7 County Warning Point and EMS Administration)

# Blue Sky Organization



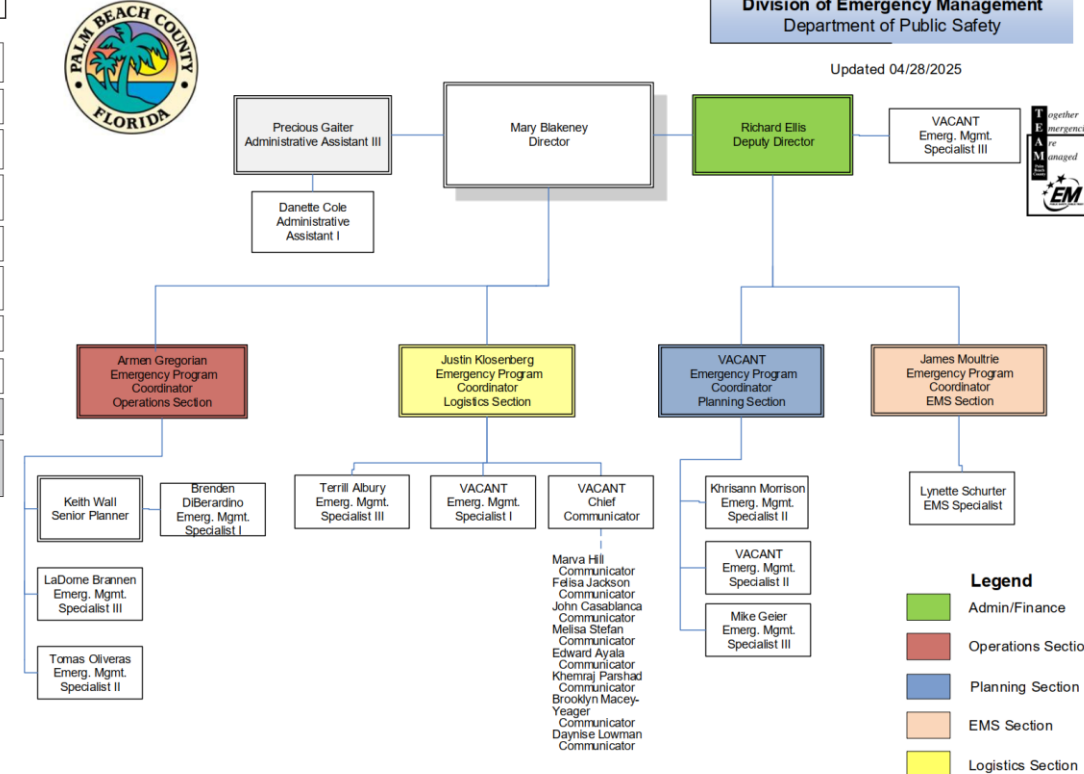
## Palm Beach County Board of County Commissioners Organizational Structure



Revised February 2025

## Organizational Chart Division of Emergency Management Department of Public Safety

Updated 04/28/2025



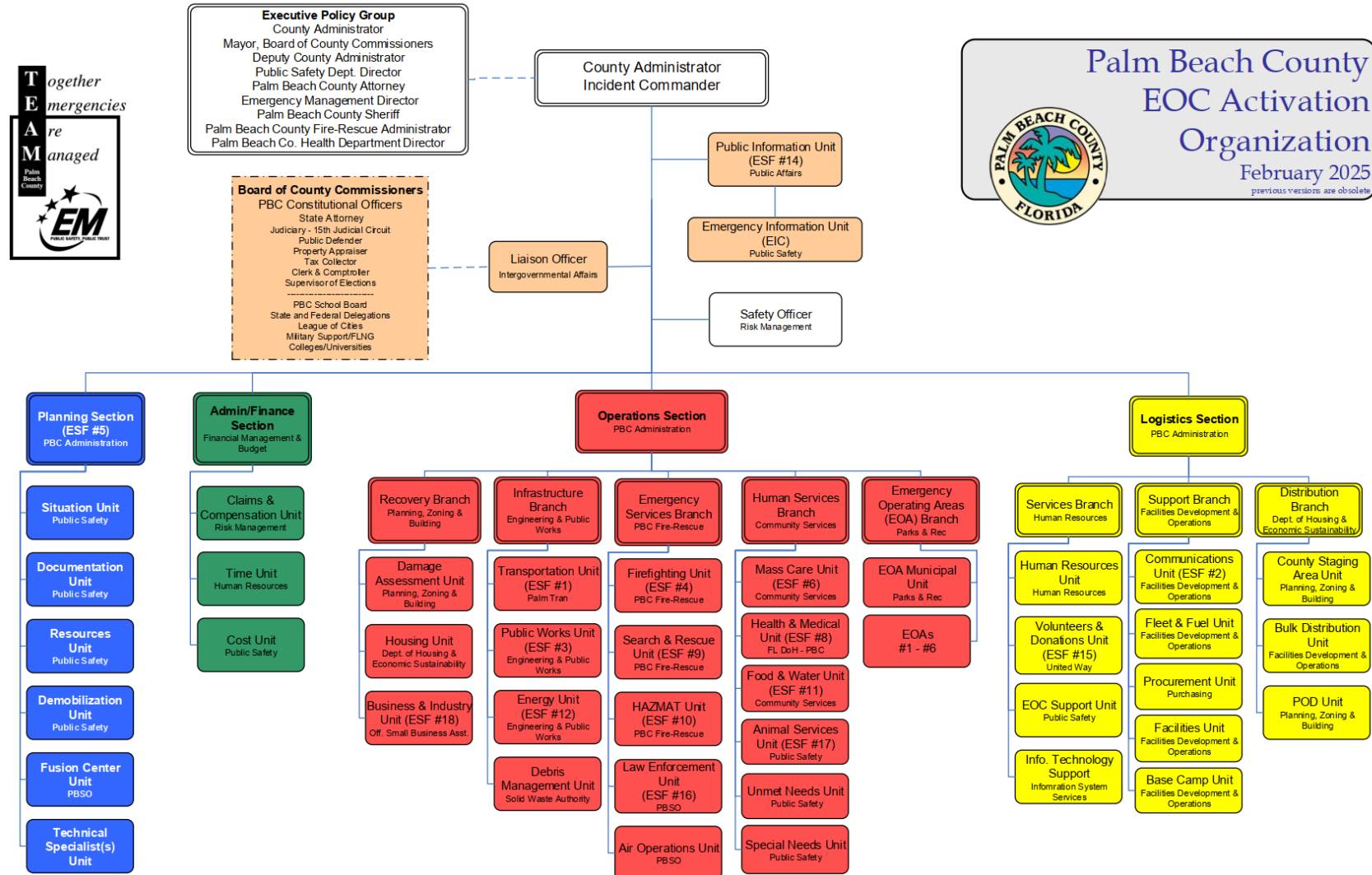
# Blue Sky Coordination



- Provide Daily Operations Report
- Hold Bi-monthly Municipal Meetings
- Hold Bi-Monthly Emergency Management TEAM Meetings
- Hurricane Season Presentation to the League of Cities
- Provide Bi-Weekly Training and Exercise Announcements
- LMS and CRS Working Group Meetings

**EM representatives:** please remember that since DEM notifies only the two (2) representatives designated by your municipality or organization, it is your responsibility to communicate with, and share all emergency alerts/notifications and other relevant information received from, the DEM and EOC with all appropriate personnel within your municipality or organization in a timely manner.

# Gray Sky Organization



# Gray Sky Coordination



- Hold Municipal Conference Calls
- Municipal EEI Board in WebEOC
- Municipal Build Out in WebEOC
  - Mission/Resources, IAPs, etc.

**EM representatives:** please remember that since DEM notifies only the two (2) representatives designated by your municipality or organization, it is your responsibility to communicate with, and share all emergency alerts/notifications and other relevant information received from, the DEM and EOC with all appropriate personnel within your municipality or organization in a timely manner.

# Questions?

