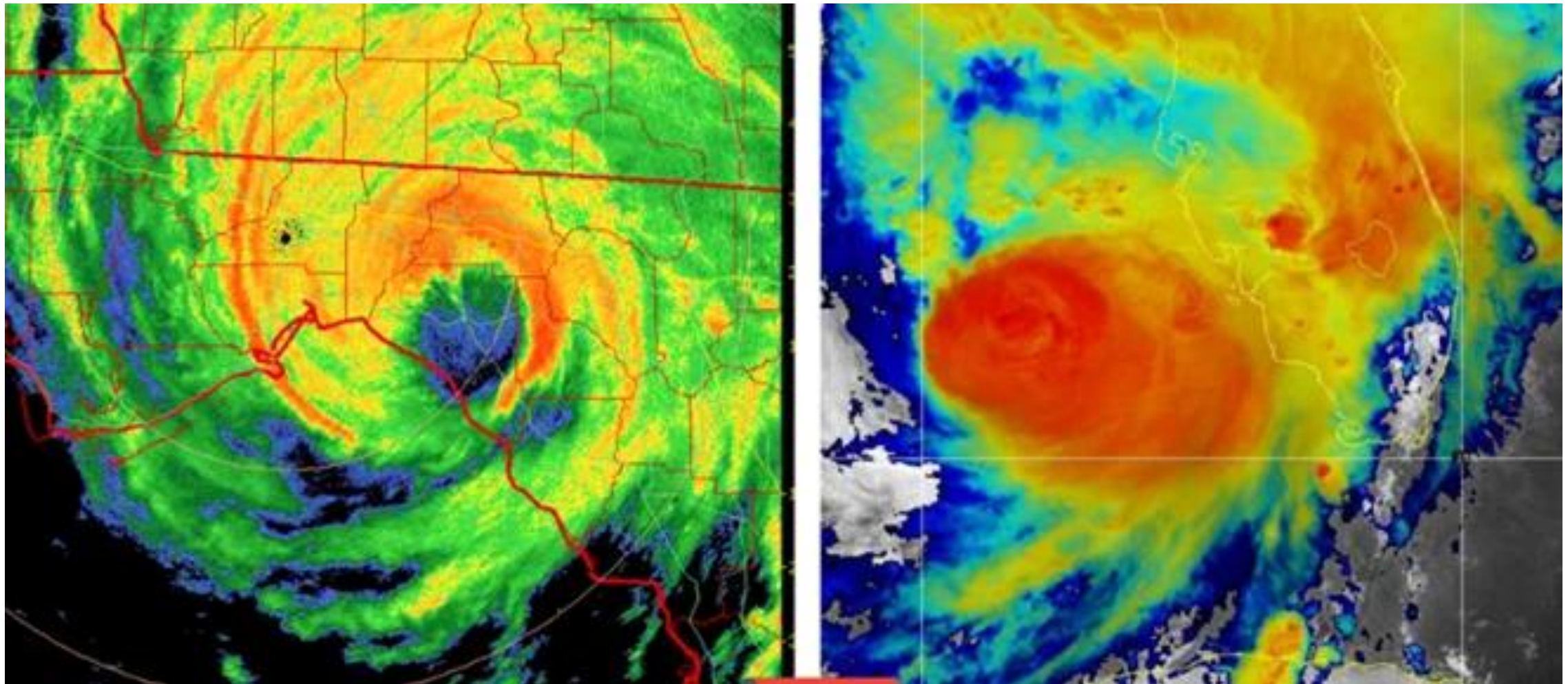


Hurricanes Helene & Milton

The Pinellas County Experience



09/23: Potential Tropical Cyclone #9 Forms



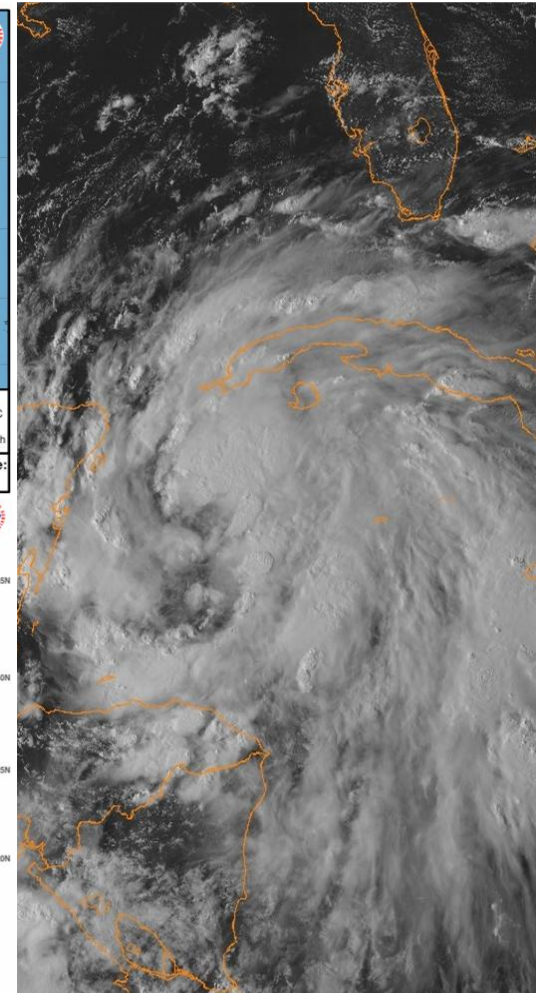
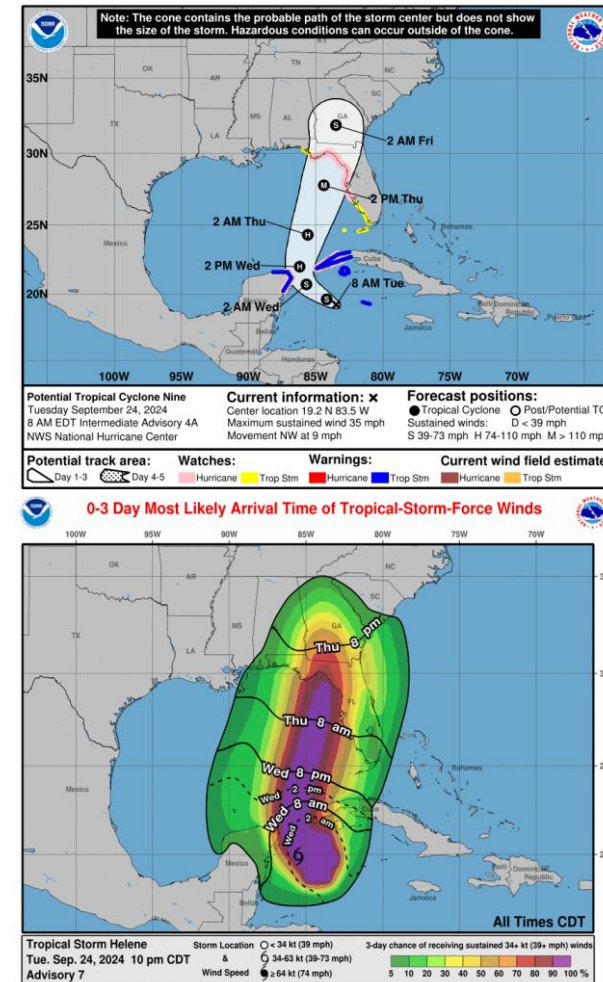
- While Tampa Bay is still recovering from Hurricane Debby, Potential Tropical Cyclone #9 forms in the W Caribbean
- NHC begins explicitly forecasting a Major Hurricane to hit FL
- EOC Activates to a Level 3 – Enhanced Monitoring, begins calls/meetings, partner and public messaging
- FL State of Emergency declared; Emergency BCC meeting scheduled



09/24: Tropical Storm Helene Forms



- Hurricane, Storm Surge Watches issued for Pinellas County in the AM; Warnings issued in the PM
- 5' – 8' of Surge, 80+ MPH gusts forecast
- CIC activates, EOC activates to a Level 2 – Partial Activation
- BCC declares a Local State of Emergency
- Mandatory Evacuation Order issued for Level A Healthcare Facilities
- Schools, County Government announce closures

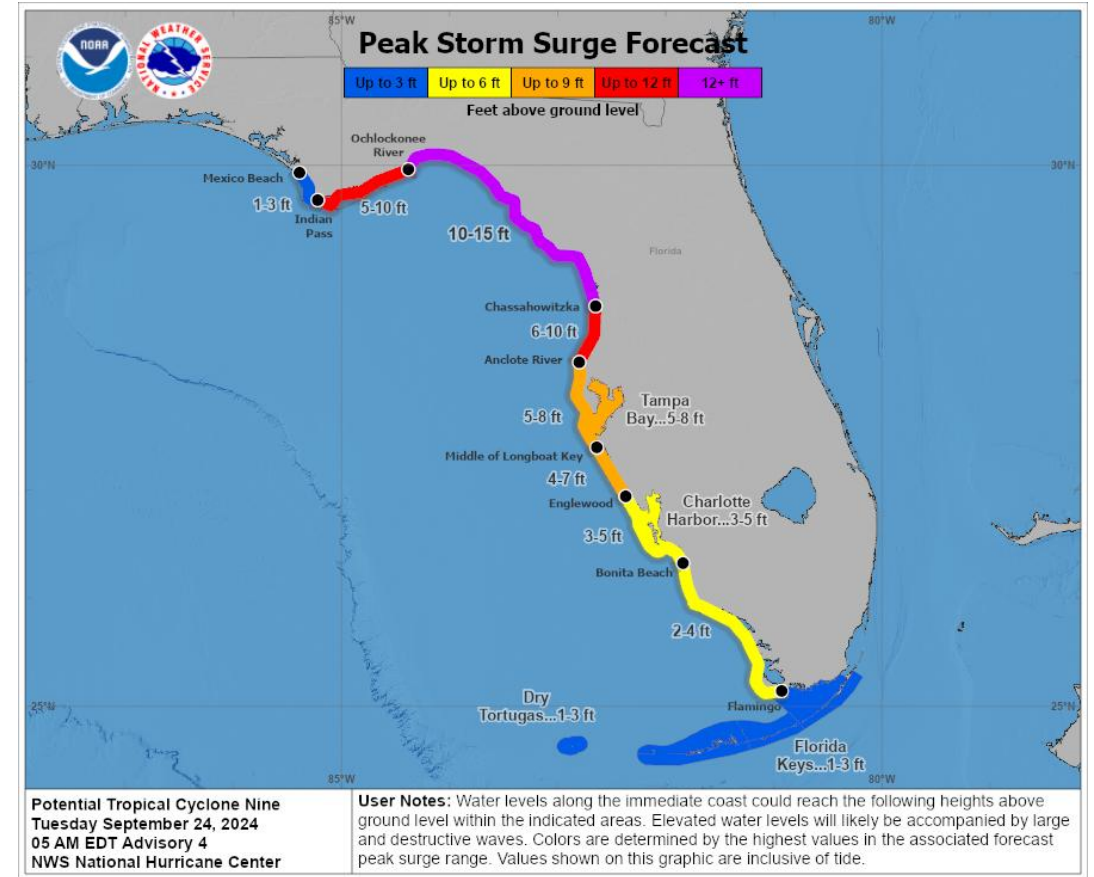
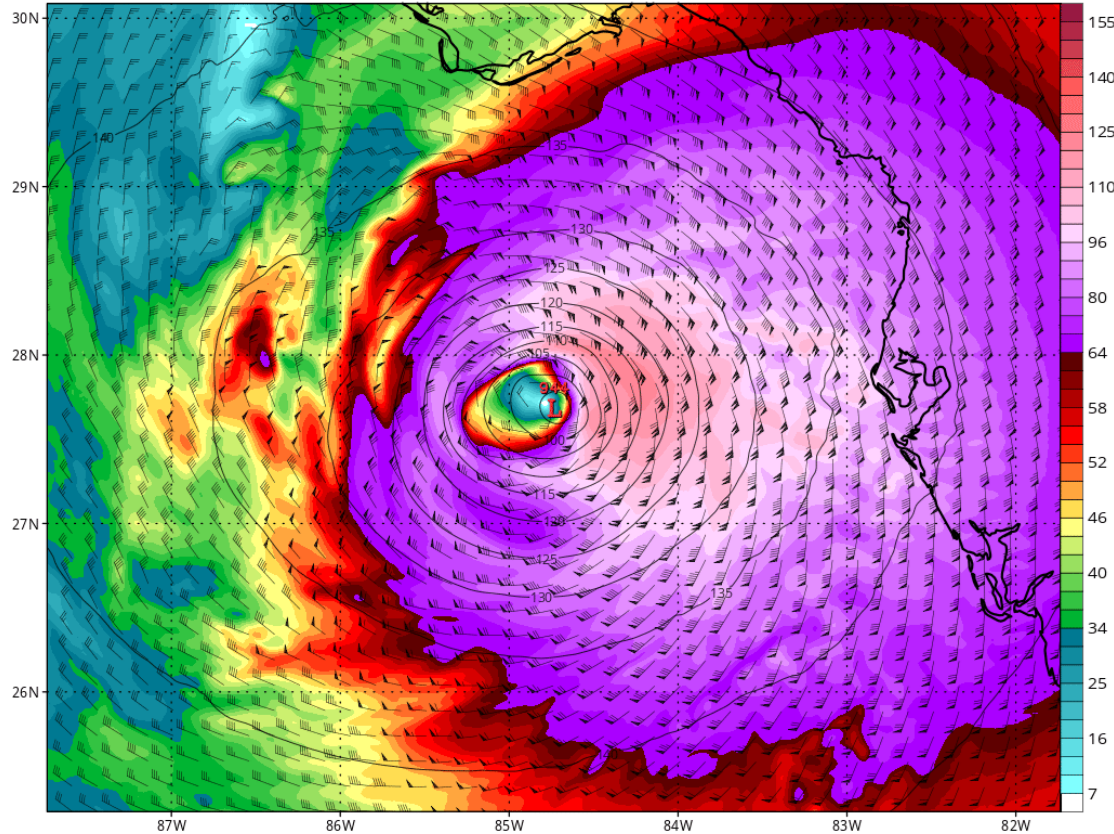


09/24: Tropical Storm Helene Forms



HWRP HELENE-09L 850 hPa Height (dam), Wind (kt), & MSLP Centers (hPa)
Init: 18z Sep 24 2024 Forecast Hour: [48] valid at 18z Thu, Sep 26 2024

Min MSLP: 944.2mb | Max Wind: 123.0kt
TROPICALTIDBITS.COM

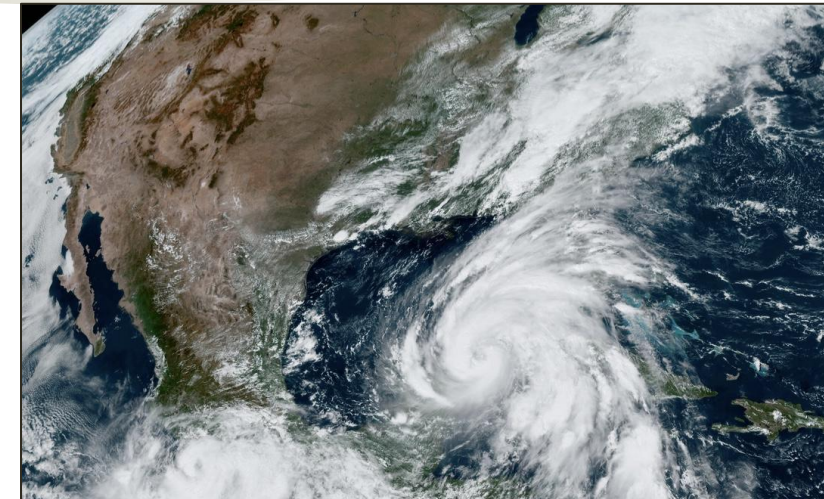
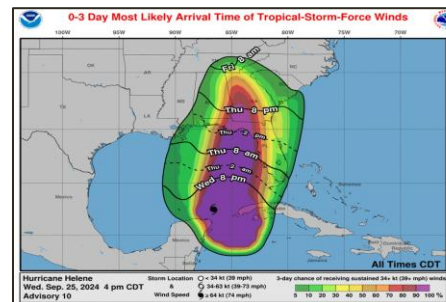
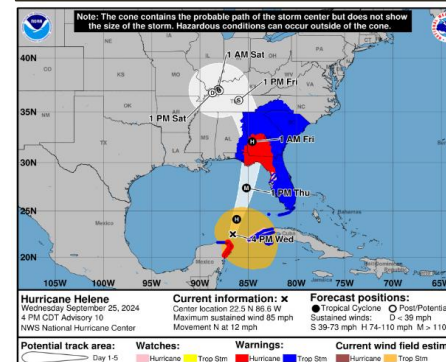


Potential Tropical Cyclone Nine
Tuesday September 24, 2024
05 AM EDT Advisory 4
NWS National Hurricane Center

User Notes: Water levels along the immediate coast could reach the following heights above ground level within the indicated areas. Elevated water levels will likely be accompanied by large and destructive waves. Colors are determined by the highest values in the associated forecast peak surge range. Values shown on this graphic are inclusive of tide.

09/25: Helene Grows/Strengthens Rapidly

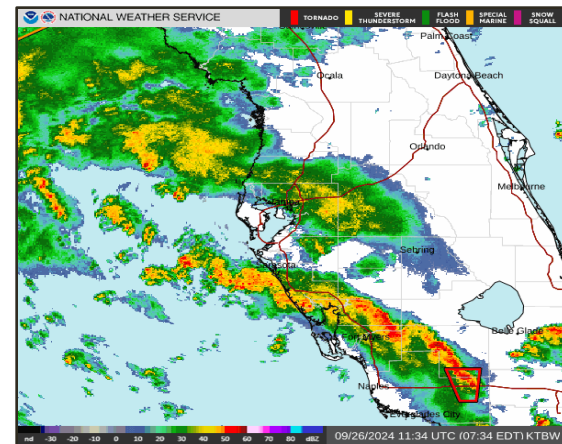
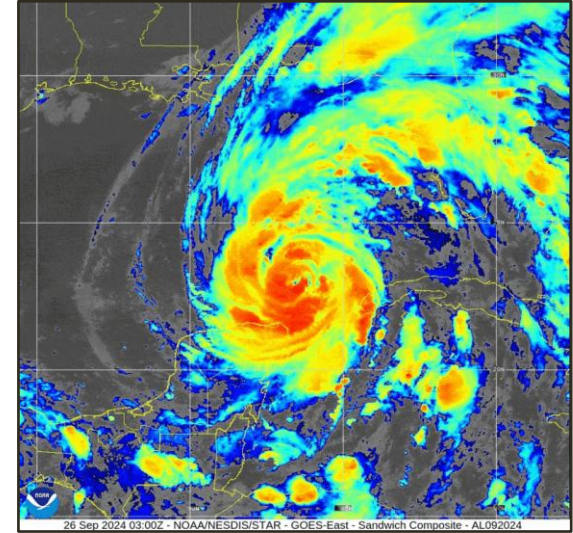
- Helene becomes a Hurricane, forecast to strengthen rapidly and grow to 400+ miles wide
- EOC activates to a Level 1 – Full Activation
- Mandatory Level A Evacuation Order issued
- Special Needs, Hospital, etc. Evacuations Begin and shelters open
- 6 shelters open at 5 locations with additional shelters on standby status



09/26 AM: Major Hurricane Helene



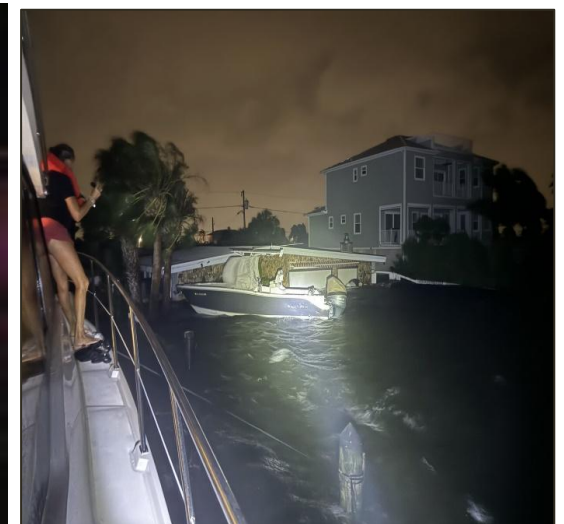
- Rainbands, TS winds arrive in the county
- Barrier Islands access restricted/closed by law enforcement
- Fire stations, Police stations evacuate
- Airports, bridges, some roads begin shutting down due to impacts
- Last minute public transit options organized
- No additional standby shelter will open



09/26 PM: Major Hurricane Helene



- Winds of 70 MPH+ measured, widespread life-threatening storm surge flooding begins
- All bridges shut down, isolating Pinellas County
- Emergency services shut down in some areas due to flooding; numerous structure fires and water rescues reported
- Many critical pump, lift, and water treatment stations go offline, large water main breaks reported
- Population in shelters is at 1700 residents
- Nearly 50% of the county without power



09/27 AM: Helene Moves Away

- Winds begin to die down, flooding recedes, all Watches/Warnings cancelled
- Widespread damage reported, debris, and erosion/sand with critical infrastructure damaged/destroyed
- Urban Search and Rescue, Debris Pushes, Rapid Assessments begin
- Many critical pump, lift, and water treatment stations remain, large water main breaks reported
- Nearly 50% of the county without power
- 12 people found to have drowned in surge

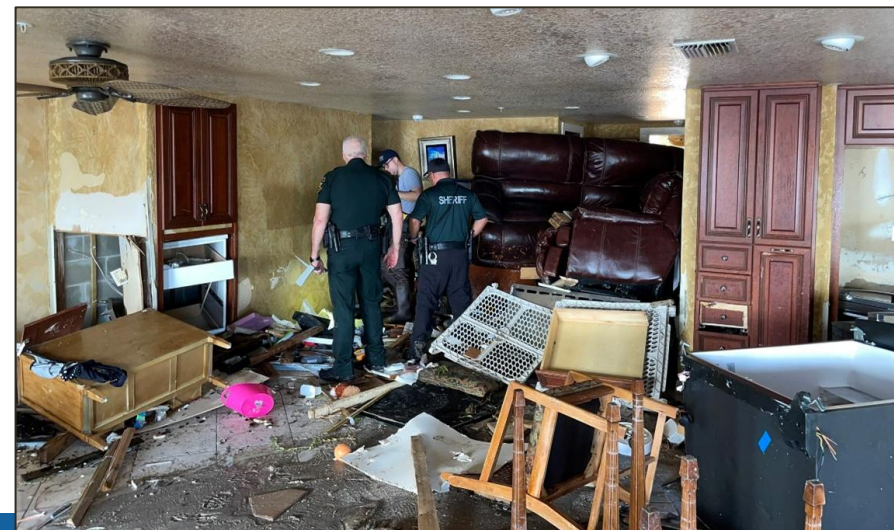
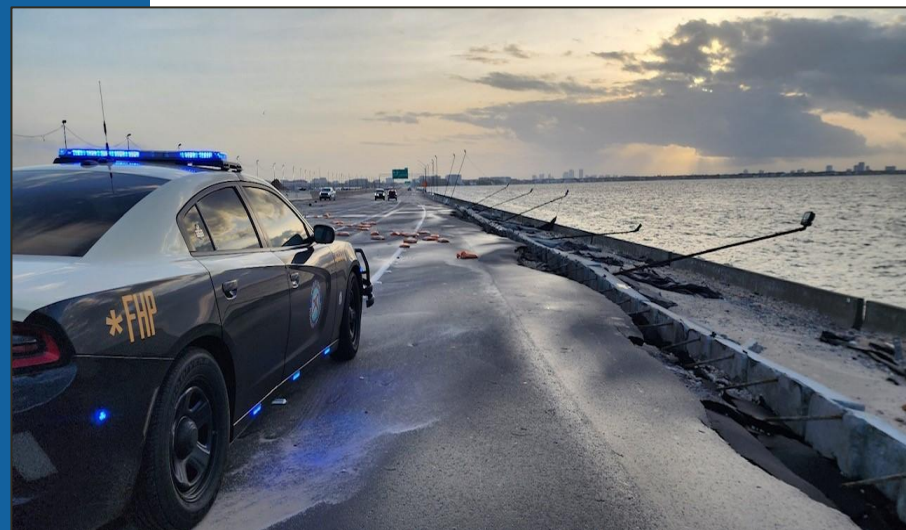
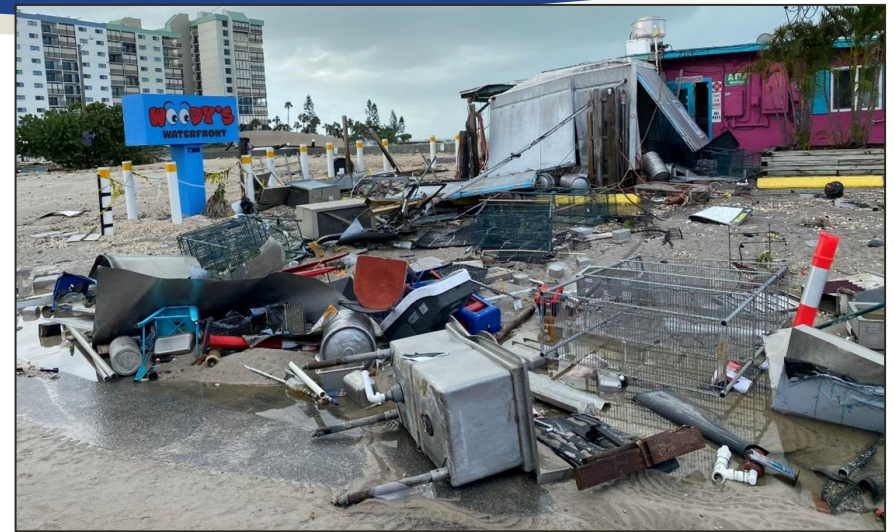
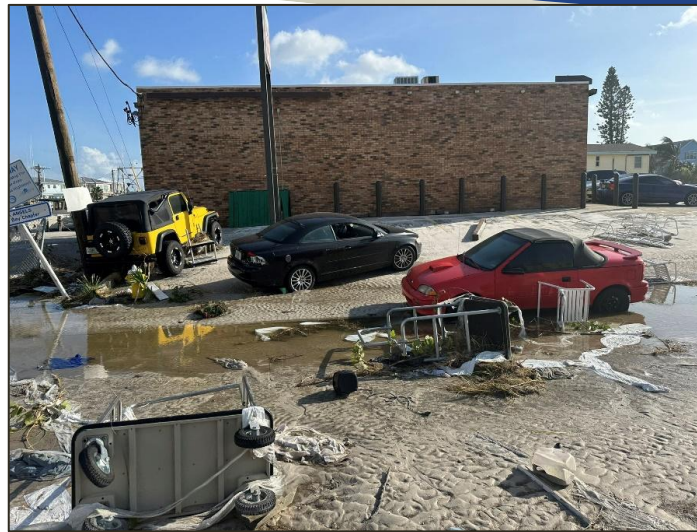


09/28: Helene Aftermath



- **2 step down shelter locations will open**
 - **Ross Norton – Gen Pop** (Supported by Amer. Red Cross)
 - **Lealman Exchange – Special Needs** (Operated by DOH and County)
- **107 residents at step down shelters, this population will grow to almost 225 residents over the next week**
- **County starts first of its kind NCS program to move residents out of shelters, this program continues until Hurricane Milton**

Helene Aftermath

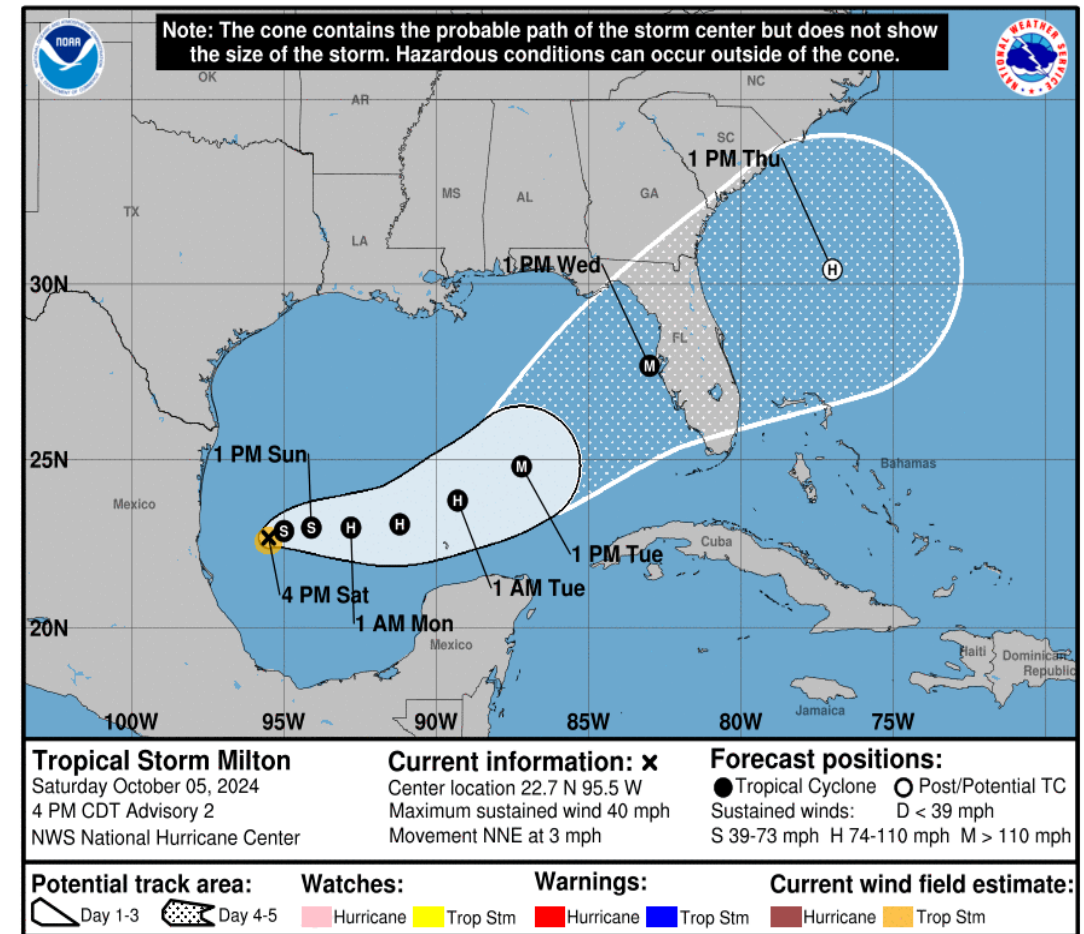




If Helene was not bad enough...

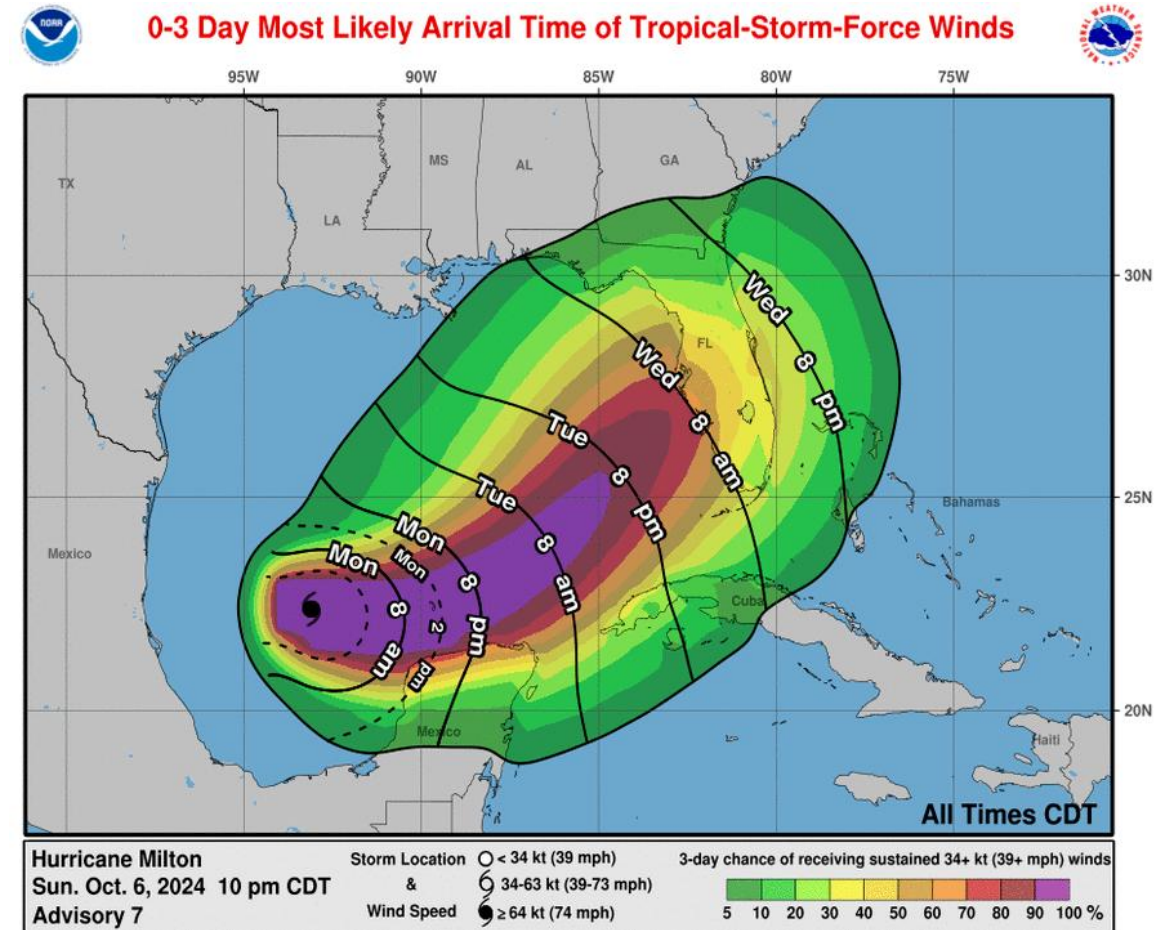
10/05: Tropical Storm Milton Forms

- In the immediate recovery of Helene, Milton forms
- Forecast to rapidly intensify into a Major Hurricane and hit west central FL
- Many residents still displaced or in shelter
- EOC remained at a Level 1 – Full Activation, CIC Activated
- Recovery operations largely stop and transition back to response
- Critical push to clear debris ahead of the storm
- Human Services Branch Activates staffing contract with CDR



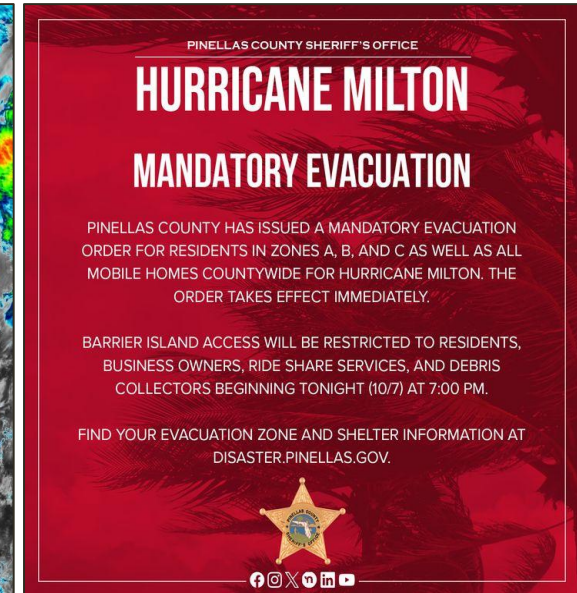
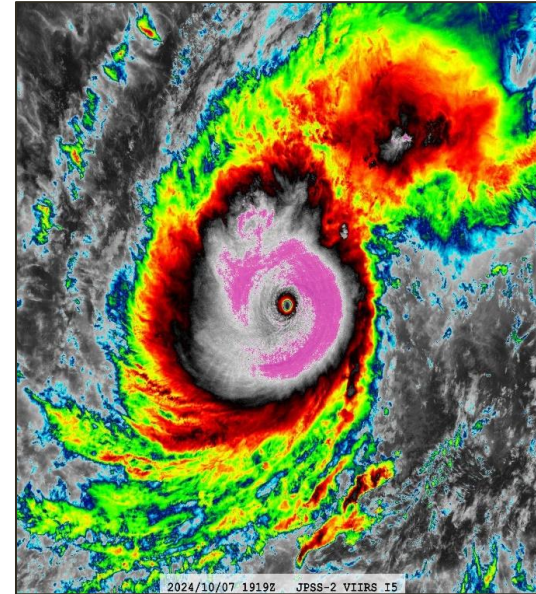
10/06: Milton Intensifies

- Milton begins explosive intensification by the afternoon
- Mandatory evacuation order for all healthcare facilities in Level A, B, and C
- Schools, County Government close again
- Residents urged to prepare for possibly catastrophic impacts



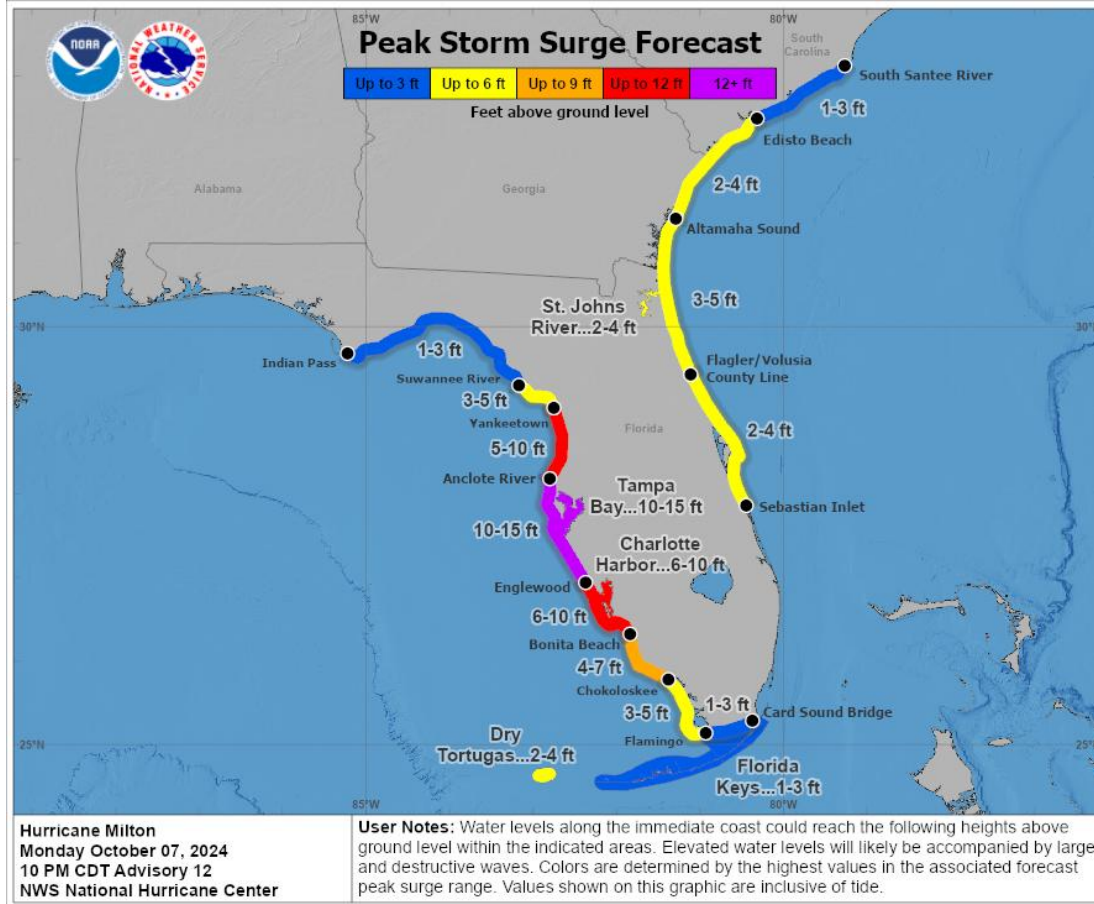
10/07: Milton Explosively Intensifies

- Milton becomes an extremely powerful Category 5 Hurricane
- Hurricane, Storm Surge Warnings issued
- Mandatory Evacuations Ordered for Levels A, B, and C in Pinellas County
- 6 shelters open for Milton
- Presidential Declaration, State of Emergency, Local State of Emergency issued



“Residents in Florida should closely follow the orders from their local emergency management officials, as Milton has the potential to be one of the most destructive hurricanes on record for west-central Florida”

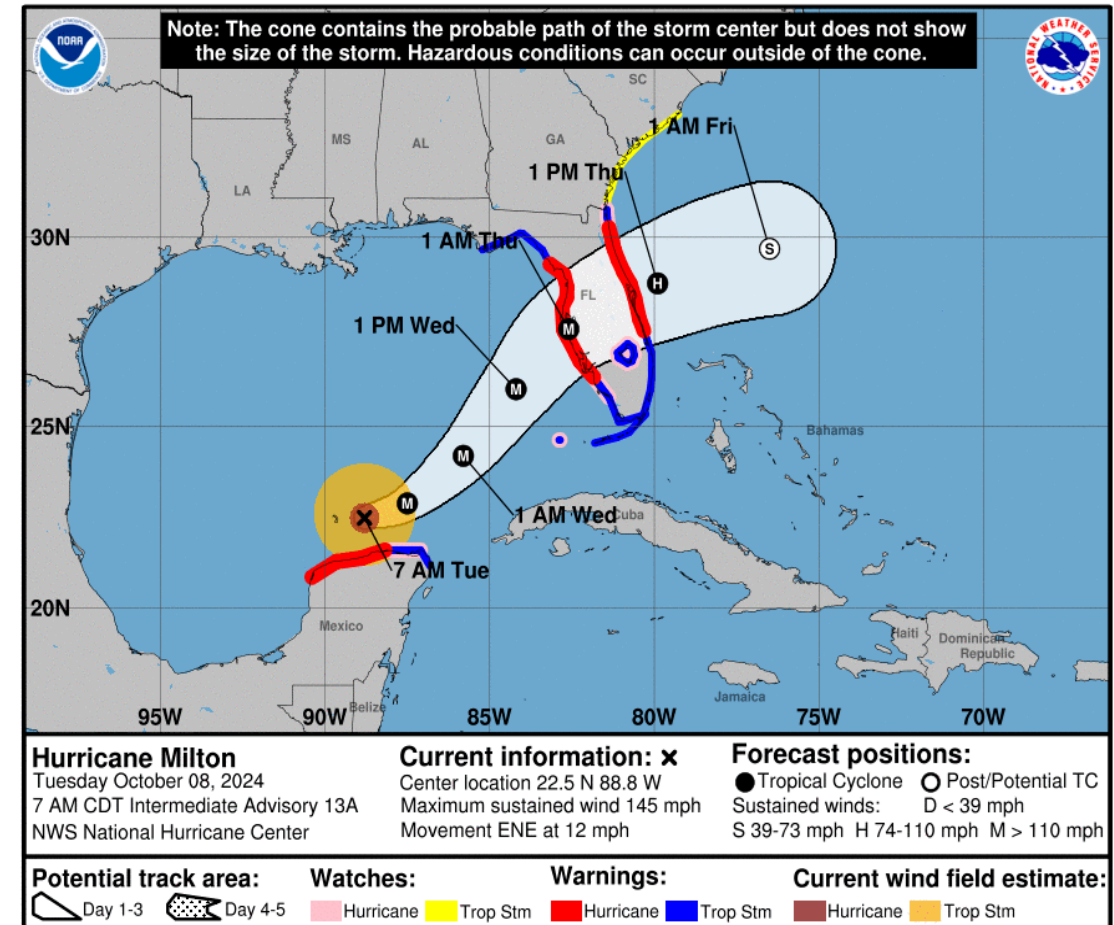
10/07: Milton Explosively Intensifies



10/08: Major Hurricane Milton Approaches

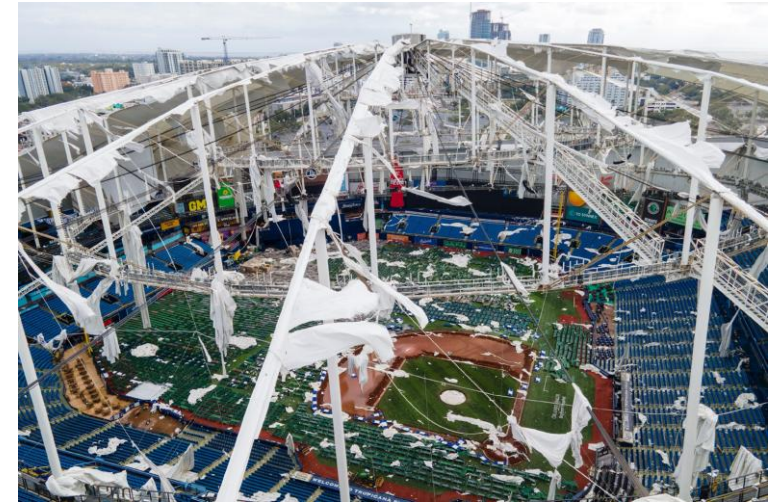


- Response actions continue with dire messaging sent urging residents to evacuate and take action
- Widespread major hurricane force winds, storm surge, and flooding rains remained forecast for Pinellas County
- Additional shelters open



10/09: Major Hurricane Milton Impacts FL

- Extreme Wind Warning issued for first time ever in Pinellas County
- Final standby shelters open
- Widespread wind damage, flooding rains reported
- Many critical infrastructure sectors go offline or are shut down
- No storm surge in Pinellas County as Milton makes landfall to the south in Sarasota County
- 13 Risk shelters and 2 Helene shelters provide safety for close to 12,000 residents during the height of the storm



10/10: Milton Moves Away

- Winds begin to die down, all Watches/Warnings cancelled
- Widespread wind damage reported, some rain flooding damages
- Urban Search and Rescue, Debris Pushes, Rapid Assessments begin
- Over 80% of the county without power



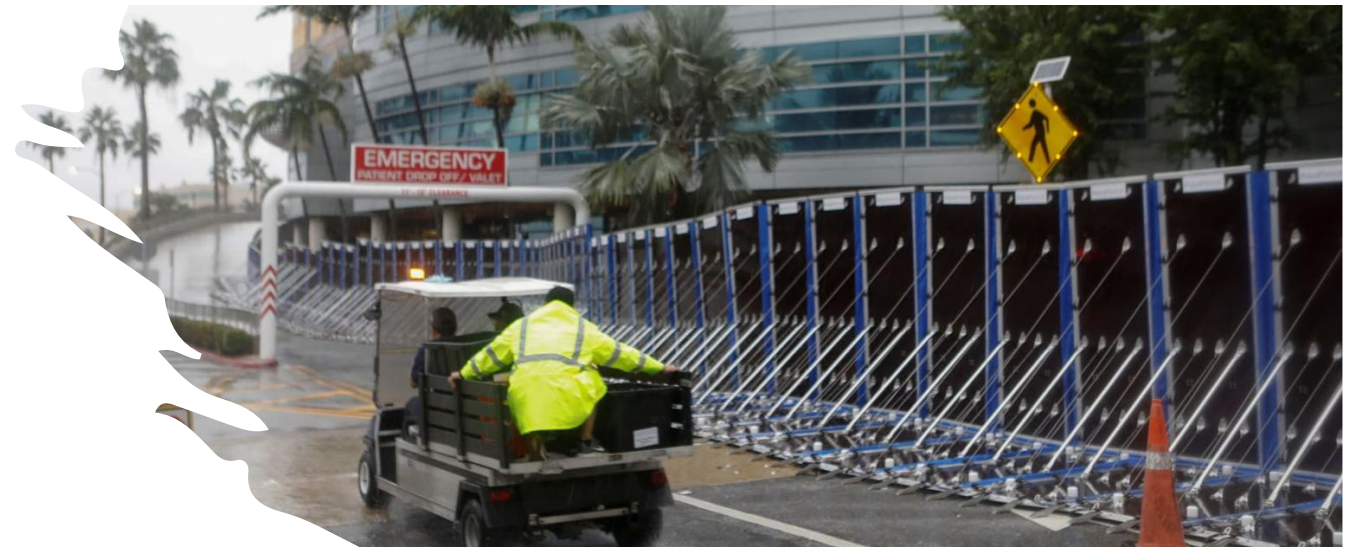
10/10 to 11/14



- **4 step down shelters are opened or transitioned to assist residents**
 - **Ross Norton**
 - **Lealman Exchange**
 - **Coliseum in St Pete**
 - **White Chapel**
- **Over 540 residents are assisted at step down sheltering that lasted until 11/14/24**

PRE-EVENT

- COMMUNICATION
 - Internal
 - External
 - Patient
- PREPARATION ACTIVITIES
 - Facility Protection/Readiness
 - Staff
 - Patient Services
- RESOURCES
 - Supplies
 - Equipment



RESPONSE

- COMMUNICATION
 - Internal
 - External
 - Patient
- RESPONSE
 - Sheltering in-place
 - Special Needs placements
 - Community Surge
- RESOURCES
 - Supplies
 - Equipment



POST EVENT

- COMMUNICATION
 - Internal
 - External
 - Patient
- RESPONSE
 - Sheltering in-place
 - Special Needs placements
 - Community Surge
- RESOURCES
 - Supplies
 - Equipment



Healthcare Facility Evacuations

- 90 healthcare facilities report evacuations, which included the movement of 4,263 patients/residents
- Compared to statewide data:
 - Pinellas County's evacuations led the state in facilities evacuated
 - Accounted for 22% of statewide healthcare facilities evacuated
 - 28% of statewide healthcare patients/residents evacuated



HCA Largo Field Hospital

- Major basement flooding which disabled hospital's internal infrastructure and critical services for 34 days
- DOH-provided FORTS field hospital allowed the emergency room to remain open to serve the community
- ~25 ambulances and walk-up patients per day
- Critical patients referred to other nearby hospitals



Healthcare Fueling Sites

- Tampa Bay and St. Petersburg = 2/3 gas stations with no fuel (back-to-back events)
- Three sites established in south, mid, and north county
- Providing fuel meant staff can report and facilities can stay operational

Location	Diesel	Gasoline
All Children's (South) Mission 04542	96.20	15,577.81
TBHMP Warehouse (Mid) Mission 04139	144.30	18,702.70
BayCare Corporate (North) Mission 03690	40.0	5530.10



Ongoing Recovery Operation & Preparedness Activities

- Hospital Site Visits
 - FDEM / TBHMPC
- Medical Provider Preparedness Meeting Series
- Local Push Packages / MRPs
- Contracted Shelter Support Staff

