



# **Engaging Business & Industry: Practical Strategies to Strengthen Emergency Management Capabilities**



# Why Partnership Matters

- **Emergencies impact both government and the private sector**
- **Businesses provide critical resources, services, and infrastructure**
- **Government and industry must work together before, during, and after disasters**
- **Strong partnerships improve community resilience**



# The Role of Emergency Management



Preparedness  
planning

Coordination  
during  
incidents

Resource  
management

Situational  
awareness and  
communication

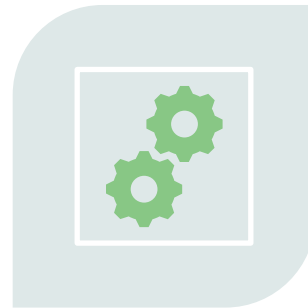
Recovery and  
continuity  
support



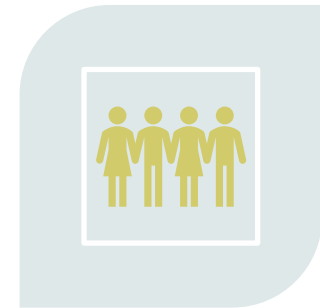
# The Role of Business & Industry



MAINTAIN CRITICAL SERVICES



PROVIDE LOGISTICS,  
SUPPLIES, TRANSPORTATION,  
AND COMMUNICATIONS



ASSIST WITH COMMUNITY  
RECOVERY EFFORTS



# How We Work Together



Information sharing



Emergency planning  
and exercises



Damage assessment  
and recovery support

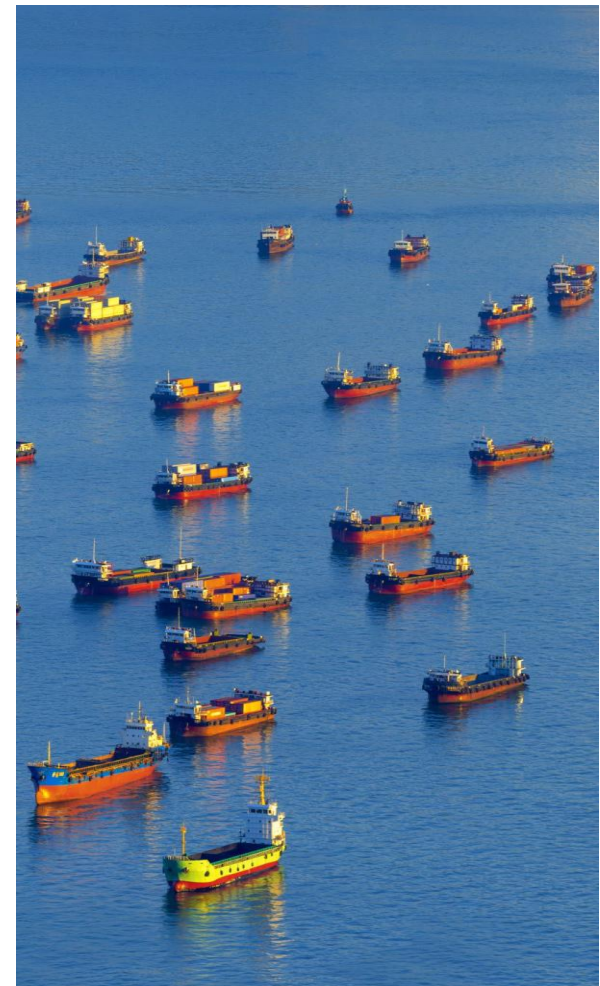


Business continuity  
planning



# Partner Spotlight: Tropical Shipping

- Importance of transportation and supply chain continuity- **90% of world trade depends on ships**  
<https://youtu.be/rTgvv7iE4OQ?si=G0OR0N1AhOwLpcn1>
- Supporting port and logistics operations- **Florida's 16 public deepwater seaports**
- Delivering critical goods and supplies before and after storms- **A critical Lifeline to Florida's economy**
- Helping restore normal operations after disasters – **This takes on the best of true public-private partnership – Reentry protocols for essential workers to USCG & Army Corp of Engineers**



Business  
Continuity  
Planning-  
The Video





# Partner Spotlight: Comcast



Supports critical communications infrastructure



Maintains internet and connectivity during emergencies



Enables real-time information sharing and coordination



Assists with rapid restoration of services post-disaster



# Partner Spotlight: Solid Waste Authority

- Debris management and post-storm cleanup
- Supporting safe and efficient recovery operations
- Coordination with county and municipal partners
- Importance of debris removal in restoring normalcy







## GOVERNOR'S HURRICANE CONFERENCE®

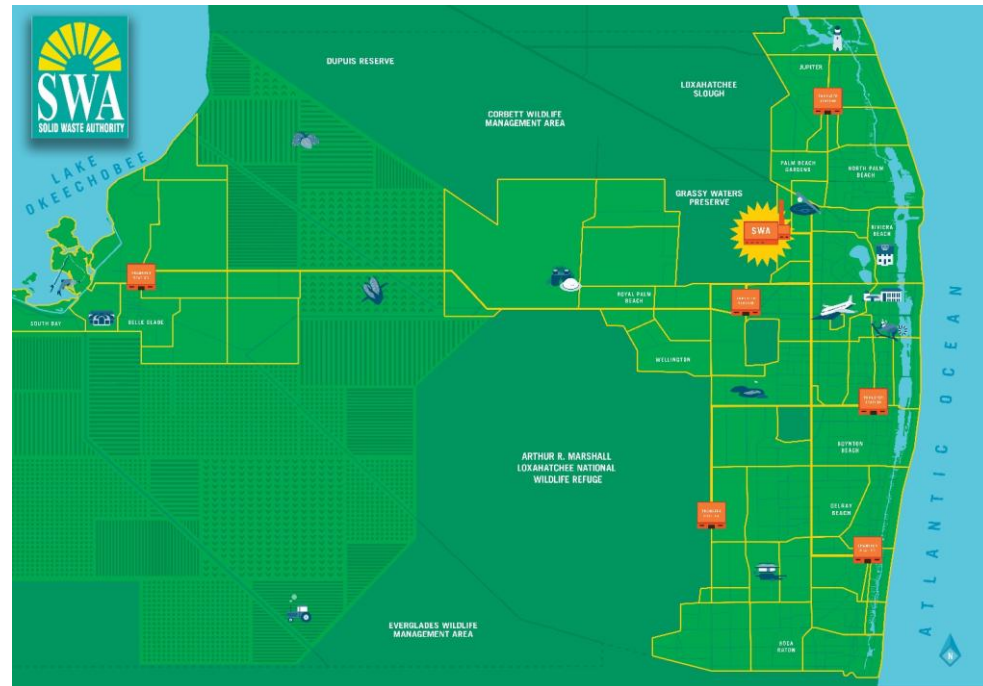
# About the Solid Waste Authority of Palm Beach County

Formed by the Florida Legislature in 1975

Responsible for disposal of all county waste and collection in the unincorporated parts (55%/45%; 2,300 sq/mi)

### Integrated Solid Waste Management System

- 2 renewable energy facilities
  - Combusts 1.8M tons of post-recycled municipal solid waste (garbage) each year
- 7 Home Chemical and Recycling Centers
  - Processes ~4.8M pounds of household hazardous waste each year
- 6 transfer stations
  - Consolidates ~75% of the county's curbside trash
- Recovered Materials Processing Facility (recycling)
  - Processes ~100,000 tons of recyclables each year
- Biosolids Processing Facility
  - Processes ~131,000 wet tons of biosolids each year
- Landfill
  - Last resort for waste disposal





## Pre-storm Priorities

### Agreements with the county

- Palm Beach County Post Disaster Debris Recovery Ordinance (2006-17)
  - Sets the legal responsibility
- Mandatory Collection Resolution (2021-01)
  - Includes right of entry and indemnification of FEMA
  - Can find both at <https://www.swa.org/246/Laws-Rules-Plans>
- Debris sites partnership at parks
- Debris removal in gated communities and on private roads for health and safety of residents and the economic recovery of the community
  - Require letters of support from county administrator, sheriff, fire rescue, school board, health department
  - Can be found at <http://www.swa.org/DocumentCenter/View/2626>

### Agreements with municipalities

- Interlocal Agreements to bring storm debris to an SWA approved site
- Memorandum of Understandings for an approved debris site to satisfy recent legislative requirements
- Debris removal contracts for cooperative purchasing
  - Can be found at [www.swa.org/157/Local-Government-FEMA-Compliance](http://www.swa.org/157/Local-Government-FEMA-Compliance)
- Palm Beach County League of Cities meetings and coordination

# Pre-storm Priorities



2026 Solid Waste Authority of PBC Debris Collection Management Workshop

© Unfiled

## MEMORANDUM OF UNDERSTANDING

This Memorandum of Understanding (MOU) is entered into on the \_\_\_\_\_ day of \_\_\_\_\_

In \_\_\_\_\_ ( herein referred to as the "Effective Date" ) by and between:

The Solid Waste Authority of Palm Beach County (Authority)

Name of Municipality \_\_\_\_\_

Parties may be referenced individually as "Party" and collectively as "Parties."

### PURPOSE AND INTENT

The purpose of this MOU is to establish a path for municipalities who wish to partner with the Authority to satisfy the requirement created by the passage of SB 180 Emergencies effective July 1, 2026. Specifically, by entering into this MOU it is the intent of the Parties to apply jointly for the authorization and use of a debris management site.

### ROLES AND RESPONSIBILITIES

In the event of a storm or similar natural disaster the Parties agree to work cooperatively for the purpose of debris management and for the use of debris management sites operated by the Authority. These sites are specifically identified and shown on Exhibit 1, which is attached hereto and incorporated herein. The terms and conditions of the use of such sites, upon authorization, are outlined in the Interlocal Agreement previously executed by the Parties for this purpose and dated ( \_\_\_\_\_ ).

### TERM AND TERMINATION

This MOU becomes effective on the date it is signed by both [all] Parties. It remains in force unless explicitly terminated, in writing, by either Party or mutually by the Parties upon 30 calendar days' notice.

The undersigned Parties acknowledge and agree to this MOU for the purposes set forth herein.

### SIGNATURES

WITNESSES:

**SOLID WASTE AUTHORITY OF  
PALM BEACH COUNTY**



## Pre-storm Priorities (Municipalities)



## Pre-storm Priorities (SWA)





## Emergency Operations Center



## Post-storm Priorities

### Immediately after a storm

- Damage assessment of critical waste infrastructure

### 24-hours after a storm

- The restoration of garbage and recycling collection services

### 24-72 hours after a storm

- Truck certifications
- Debris sites operational
- Piles at the curb: Separate garbage, vegetation and mixed storm debris



The Solid Waste Authority  
needs your help to clean up!

**Pile 1**  
 Pile 1 - garbage and recyclables

**Pile 2**  
 Pile 2 - yard waste

**Pile 3**  
 Pile 3 - storm debris

By keeping these three piles separate and away from power lines, fire hydrants and mailboxes, you will help speed our recovery!

[SWA.org/Hurricane](http://SWA.org/Hurricane)



# Post-storm coordination

\*\*\*All data contained in this report is estimated until final reconciliation has occurred\*\*\*

thompson CONSULTING SERVICES		<b>DAILY DEBRIS COLLECTION REPORT</b>		
		Daily Report For: 11/4/2017		
		Client: Solid Waste Authority of Palm Beach County		
		Project: Hurricane Irma Debris Removal		
		Report Generated On: 11/5/17		
Description of Daily Activities		Collection Statistics		
November 4, 2017		November 4, 2017		
Debris removal operations are continuing for both local and end user hauling. Truck certification is ongoing as needed.		Days from Debris Removal Start:	52	
		Days from FEMA Disaster Incident Start:	61	
		Daily Personnel / Equipment Detail		
		Total Number of Load Monitors:	45	
		Total Number of Disposal Monitors:	14	
		Total Number of Trucks & Trailers in Field		
		Unincorporated:	60	
		All Other Municipalities:	10	
		Daily ROW Debris Load Detail		
		Total Loads Collected:	492	
		Average Load by CY:	43	
		Minimum Load by CY:	16	
		Maximum Load by CY:	67	
		Average Load Call %:	89%	
		Daily Unit Rate Detail		
		Leaner:	-	
		Hanger:	-	
Right of Way (ROW) Debris Statistics				
November 4, 2017				
ROW Debris Received Detail - All Municipalities & Unincorporated				
Debris Type	Daily Received		Project to Date	
	Loads	Cubic Yards	Loads	Cubic Yards
Vegetative Debris	470	20,299	60,795	2,190,798
C and D Debris	22	907	1,101	34,990
ROW Debris Management Site (DMS) & Landfill Final Disposal Site (FDS) Detail				
Disposal/Landfill Site Name	Daily Collection		Project to Date	
	Loads	Cubic Yards	Loads	Cubic Yards
131st Ave	82	3,484	9,238	348,769
Aquarius	45	1,418	3,774	108,944
Lantana	20	588	8,566	305,069
Palm Beach Downs	158	6,898	6,867	300,357
Palm Beach Wood Products	46	2,108	6,333	224,564
South County Regional Park	103	5,180	7,748	383,938
Hooker Hwy	25	982	2,868	87,179



## Questions?





# Benefits to the County



Faster response and recovery



Better resource coordination



Improved situational awareness



Greater community resilience



# Ways Businesses Can Get Involved



Join local emergency planning efforts



Participate in exercises and training



Build relationships before disasters happen



Share capabilities and resources



Develop continuity plans



# Closing / Key Takeaways



Preparedness starts before  
hurricane season



Partnerships are essential and  
improve response and  
recovery to your community



Everyone has a role in building  
a resilient community



# Questions

- **Tomas Oliveras**
  - [toliveras@pbc.gov](mailto:toliveras@pbc.gov)
- **Jennfifer Nugent-Hill**
  - [Jnugent-hill@tropical.com](mailto:Jnugent-hill@tropical.com)
- **Michelle McGovern**
  - [Michelle\\_mcgovern@comcast.com](mailto:Michelle_mcgovern@comcast.com)
- **Willie Puz**
  - [wpuz@swa.org](mailto:wpuz@swa.org)