



Disaster Logistics Best Practices

Thursday, May 14, 2026 – 3:30pm



Purpose

In this workshop, panelists will share their experiences and outline best practices, successes, and challenges to include skill sets and attributes that make a good emergency management logistician.



Introduction of Panelists

Organizer:

Lee Mayfield, Director, Response Division – Hagerty Consulting

Panelists:

Mike Nevarez, Deputy Emergency Manager – North Port EM

Kevin Langley, CEO, Langley Insights (Former FEMA Dir Log Sys)

Jon Diamond, Program Manager - Tetra Tech



EOC Logistics Overview

Resource Management

- Triage WebEOC Resource Requests
- Acquire resources
- Track resources
- Manage County Staging Area
- Emergency Site Support
- Manage/Support Demobilization

First Responder Support

- Equipment Relocation Area
- Mutual Aid Teams
- Base Camps
- Sat Phones/Internet
- Amateur Radio Operators
- Vehicles/Fuel
- Equipment/Supplies
- Wraparound and other support services

EOC Support

- EOC Feeding and Custodial Services
- Tech Support
- Mobile Command Vehicles
- EOC Staff Support
- Sleeping Trailers
- Shower/Laundry Trailers
- Other Unmet Needs

Mass Care Support

- PODS
- Shelters
- Mass Feeding
- Volunteer/Donations
- Comfort Stations
- Public Fuel



Blue Skies Logistics

Preparedness activities to make your response life easier

- Preseason Logistics Section Meeting/WebEOC Training
- Emergency site identification, securing agreements, surveying property and confirming POC info
- Generator inventory and critical building generator needs (generator size, hookups, fuel type, burn rate, tank capacity)
- Shelter supply maintenance and deployment drills
- Understand what resources exist locally and cultivate relationships and partnerships/MOUs





Webeoc Mission Requirements

- **Clear Concise Title**
 - Does the title include the main resources requested?
- **Detailed Description**
 - Who? What? Where? When? Why? How?
 - You can, but don't need to NIMS-type your requests. Common language ok
- **Primary Point of Contact**
 - Who can answer operational/technical questions about request?
- **On-Scene Point of Contact**
 - Who will be present at the delivery location to answer questions
- **Address**
 - Where is this going?

Good Example

- Title: Dual Diesel/Gasoline Bob Truck – City of North Port PDHQ
- The City of North Port is requesting a dual diesel / gasoline bob tail fuel truck (1,000/1,000 gallons minimum) with qualified and credentialed operator to be located at City of North Port Police Department Headquarters (4980 City Hall Blvd, North Port, FL 34286) for use by first responders and generator refueling. Fuel truck is requested post landfall ASAP and for a two week time period with the ability to extend as needed.
 - Site is secured, call on-scene POC upon arrival for access to gated lot behind the PD Facility
- POC: Mike Nevarez, 941-740-2912
- On Scene POC: Jon Diamond – 305-202-0373

Bad Example

- Fuel needed ASAP



Disaster Resource Categories



Personnel



Facilities



Commodities



Vehicles



Equipment



Support Services

Personnel

EOC Support vs IMT

Team vs Single Resource

SMAA vs FEPA FMAST vs EMAC

USAR

Strike Teams (Ambulance (ALS vs BLS), Engine,) (Type)

Cut/Toss Team

Shelter Staffing vs Case Management vs MASTT

HAZMAT

IA/PA, DSA

Liaison (FDEM, Recovery, FLNG, etc)

Technical (ex: GIS)

1206 Substantial Damage Assessment

Code Enforcement/Permit Review/Building Inspectors



Equipment



Forklift



Generators (building, vs deployed)



Mobile Command Unit



Flood Control (Tiger Dams, Muscle Walls, Bags)



Pumps



Comms (Starlink, MARC, COW, COLT)



Connex, 53' Trailer





Vehicles

- UTVs
- Box Truck
- Semi-truck
- Reefer
- Vac Truck
- Florida Licensing on Wheels (FLOW) Bus
- High Water
- Heavy Machinery: Front Loader/Dump Trucks/Claw Truck, etc
- Air Ops
- Mobile Command Vehicles



Facilities/Emergency Sites



- Staging Areas (not just yours; everyone wants one)
- Base Camps, PODs, Shelters
- DRCs and MARCs
- Debris Management Sites
- Comfort Stations
- Donation Warehouses + Collection Sites
- Volunteer Reception Center
- Volunteer Housing
- DSNAP
- Fuel Sites
- Insurance Villages





Services

- EOC Feeding
- EOC Custodial
- EOC Security
- Other EOC Support Services!



Commodities



Most Requested



- Meals



- Water



- Ice



- Tarps/Sheeting

Shelter Support Items (CUSI)



- Cots



- Blankets



- Hygiene Kits



- Infant Toddler Kits



Points of Distribution

- **POD Operations – Why They Succeed or Fail**
 - PODs fail more from **planning gaps** than staffing shortages
- **Common issues:**
 - Poor site selection
 - Traffic flow breakdowns
 - Resupply timing mismatches
 - No real-time consumption tracking
- **What high-performing PODs get right:**
 - Pre-identified sites with logistics ingress/egress plans
 - Consumption-rate forecasting
 - Clear local/federal handoff rules





Staging Areas (LSA/CSA)

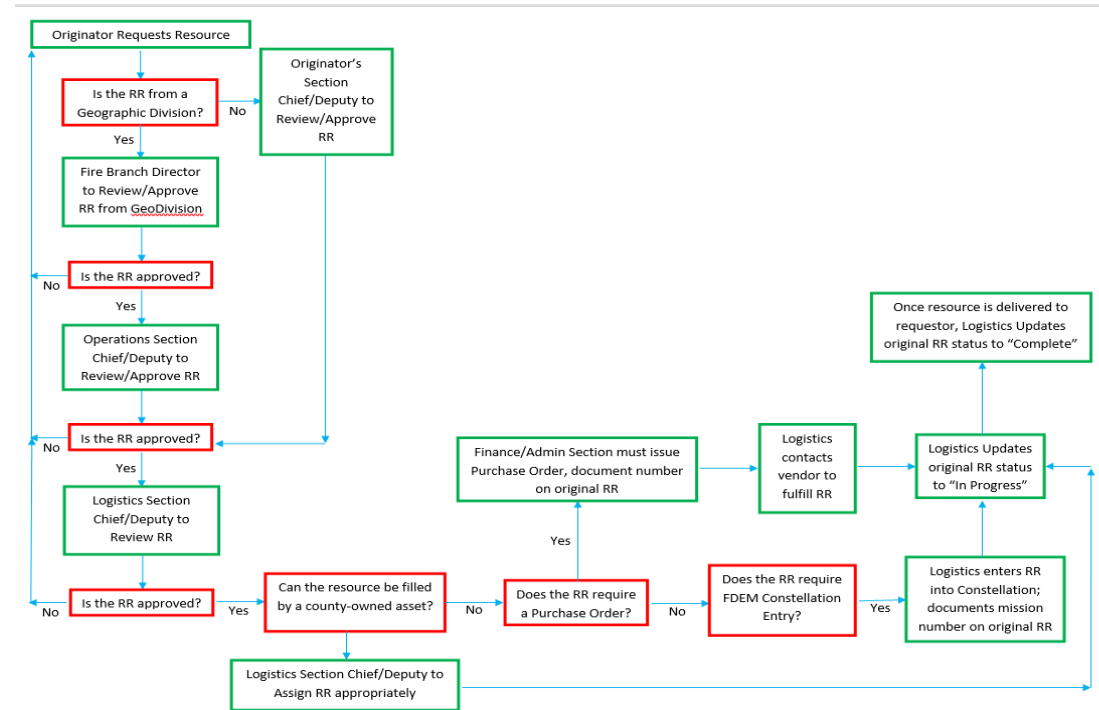
- **Staging Areas are force multipliers or force drains**
 - **Forward positioning of resources: Cuts transportation time**
 - **Deconfliction and visibility: Allows flow visibility**
 - **Flexibility: Can support multiple ISBs as needs shift**
 - **Efficient distribution: Hub where assets can push quickly**
 - **Force preservation: Reduces strain on tactical personnel**
- **Key success factors:**
 - **Proximity vs survivability trade-offs**
 - **Command and control discipline**
 - **Inventory accountability**
- **Hidden killer: staging areas that become parking lots**
- **Operational Truth**
 - **If you don't know what's in your staging area in near real-time, you don't have a staging area—you have a rumor**



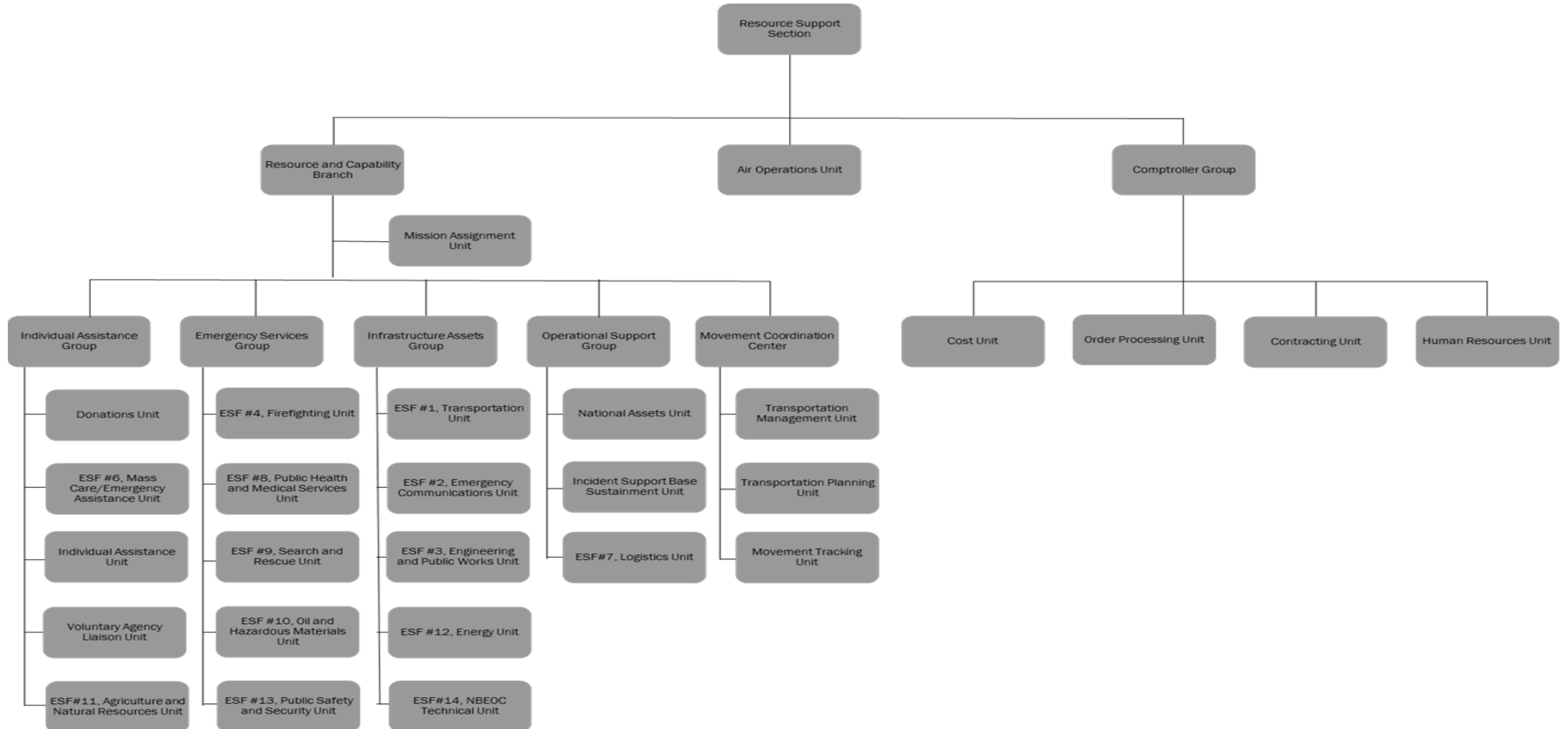


Resource Ordering Process

- Single Point Ordering System
 - Usually WebEOC
 - Approvals built-in
 - System of record (cost recovery)
- City -> County -> State -> Fed
 - Each level/jurisdiction should be attempting to use their own contracts, vendors and internal resources before submitting a request upward



Federal Resource Support Organization



Federal Resource Request Form Process



Phase	Lead Entity	Key Actions	Output
1. Initiation	STT Gov't	Identify need, complete RRF, authorize	Submitted RRF
2. Validation	FEMA RRCC	Review, verify eligibility and mission	Approved RRF
3. Sourcing	FEMA Logistics/Ops	Assign fulfillment method	Assigned sourcing path
4. Execution	FEMA Logistics	Deliver and confirm	Fulfilled request
5. Closeout	FEMA + STT	Verify completion and recordkeeping	Closed RRF

Resource Tracking & Inventory/Asset Management



Federal Systems (ATO, FEDRAMP SAAS COTS Products)

1. Logistics Supply Chain Management System (LSCMS) State Portal

- **Operational Capability:** Facilitates end-to-end, no-cost State tracking of federal commodities.
- **Logistics Node Visibility:** Provides granular, real-time visibility to State EOCs from federal ISBs to state staging areas (SSA) down to Points of Distribution (PODs).
- **Edge Device Accessibility:** Fully accessible and operable on mobile devices to support field operations.
- **Licensing Model:** Provisioned with two licenses per state; disasters facilitate funding for supplemental licenses as needed.
- **System Intelligence:** Enhances decision-making and rapid replenishment planning by tracking commodity consumption rates (e.g., water, meals) directly at the SSA and POD level.

Resource Tracking & Inventory/Asset Management



Federal Systems (ATO, FEDRAMP SAAS COTS Products)

2. Lifecycle Process Management System

- **No-Code Configuration:** Easily configured to support diverse logistics profiles.
 - State EM Warehouses and Medical Supply inventories.
- **Comprehensive Asset Management:** Tracks and manages assets, providing predictive and preventative maintenance schedules for critical equipment.
 - Generators and Water Pumps
 - Emergency Shelters
 - Communication Systems
 - Rescue Equipment (Boats, helicopters, vehicles for search-and-rescue operations).
- **Austere Operations Capability:** Features a mobile capability (phones and tablets) that supports work processes in both connected and disconnected environments.
- **Operational Reporting:** Provides the ability to instantly track and generate reports across the entire chain of command, facilitating direct reporting to FEMA and government entities.
- **Interoperability:** Architected for ease of integration with Helpdesk platforms (e.g., ServiceNow) and financial systems.



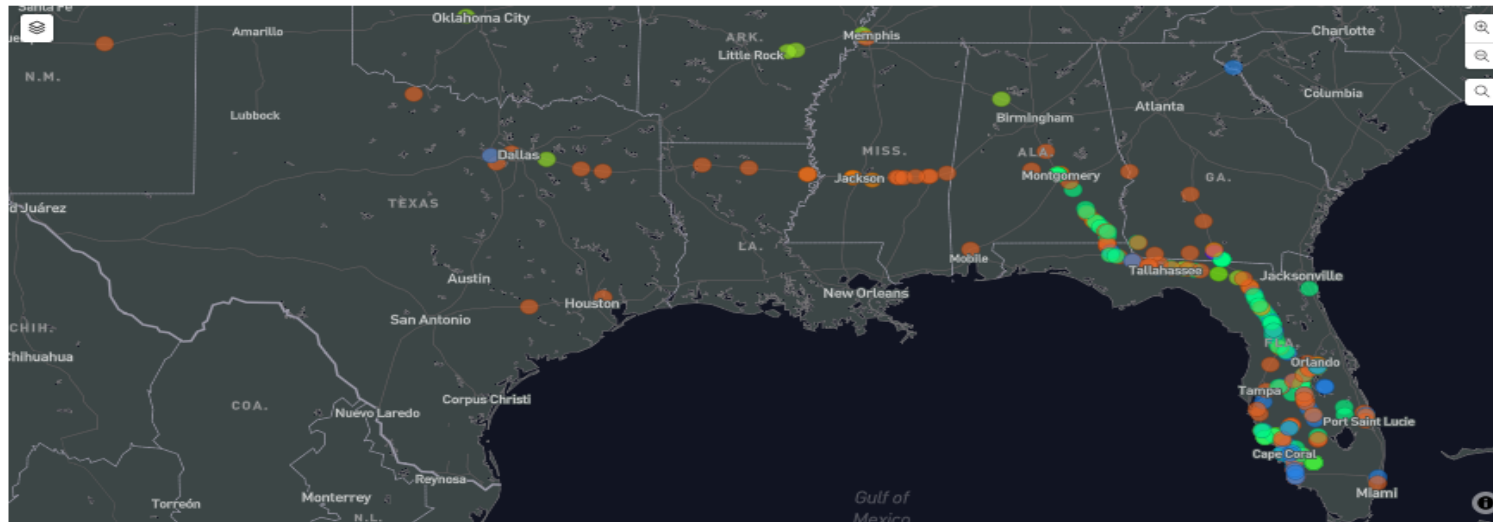
Intransit Visibility Improves Decision Making

FEMA LSCMS | InTransit ASNs - To Disaster & State

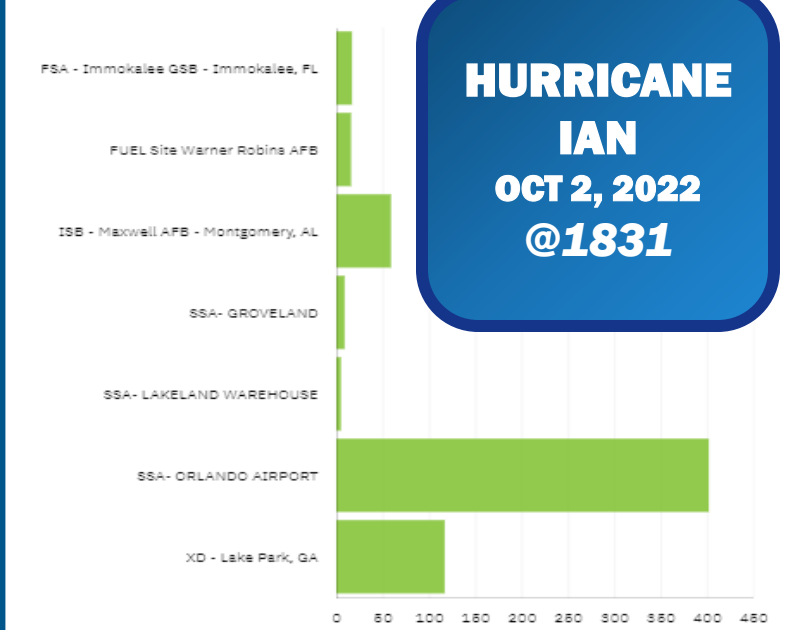
Trailer Loads In-Transit to Disaster	17	155	15	6	0	0	0	0	16	0
	Gens	Water	Meals	Tarps	CUSI	Sheeting	Cots	Blankets	Fuel	Ladders
Trailer Loads In-Transit to State	0	257	99	55	5	0	0	0	0	0
	Gens	Water	Meals	Tarps	CUSI	Sheeting	Cots	Blankets	Fuel	Ladders

Item Description

- Generator, 60KW to 99KW, Die...
- Woven Tarp, 20X25, Fire Retar...
- Meals, Regular
- Drinking Water, 2 Year
- Drinking Water, 10 Year
- Generator, 101-200kW
- Drinking Water, 50 Year
- Meals, Human Daily Ration Me...
- Generator, 15-60kW
- Generator, 401-704kW
- Generator, 201-400kW
- Perishable Infant Toddler Kit, ...
- Generator, 301KW to 600KW, ...
- Generator, 705KW->1MW
- Generator, 61-100kW
- Non-Perishable Infant Toddler...



InTransit ASNs by Destination



**HURRICANE IAN
OCT 2, 2022
@1831**



Common Pitfalls

- Straight to Site vs Staging Area
- Dedicated Phone for Logs
- Mobilization disruptions – roads closed, bridges out, post-landfall site changes
- Deviation from Single Point Ordering System (requests initiating outside WebEOC)
- Recognizing difference between routine requests and extraordinary requests (i.e. tasks that may require a multi-agency taskforce not a besieged Logistics Ordering Unit Leader)



Lessons Learned

- Planning Coordination for Resource Targeting
- Importance of Resource Mission Numbers
- Resource Prioritization
- Right resource for the job – FLNG vs Law Enforcement vs Security
- Access and Functional Needs
- Selling the narrative



QUESTIONS ?



THANK YOU!

Mike Nevarez: mnevarez@northportfl.gov

Kevin Langley: kevin@langleyinsights.com

Jon Diamond: jon.diamond@tetrattech.com