



ABCs of Debris Management

Jeffrey M. Goldberg, FPEM, FMI, ICT3
Director
Walton County Emergency Management

Wes Holden
Director of Government Relations
DRC Emergency Services

Matt Gierden
Senior Vice President
AshBritt

Joe Hayes
Regional Manager - Florida
CrowderGulf, Inc.

Joe Gross
Executive Vice President/Director of Operations
Synergy DR



Overview and Introductions



AshBritt

Matt Gierden
Senior Vice President

AshBritt



AshBritt



AshBritt

Debris Collection & Allowables



Debris removal guidelines

In efforts to expedite the debris removal process, please follow these rules

Placing debris **near or on trees, poles or other structures** makes removal difficult. This includes fire hydrants and meters.

Debris separation

Please separate debris into the **six categories**, shown below.

Electronics

Television, computer, stereo, phone, DVD player

Large Appliances

Refrigerator, washer/dryer, air conditioner, stove, water heater, dishwasher

Hazardous waste

Oil, battery, pesticide, paint, cleaning supplies, compressed gas

Vegetative debris

Tree branches, leaves, logs, plants

Construction debris

Building materials, drywall, lumber, carpet, furniture, plumbing

Household garbage

Bagged garbage, discarded food, paper, packaging.

Debris should be placed curbside

Debris should not **block roadway**

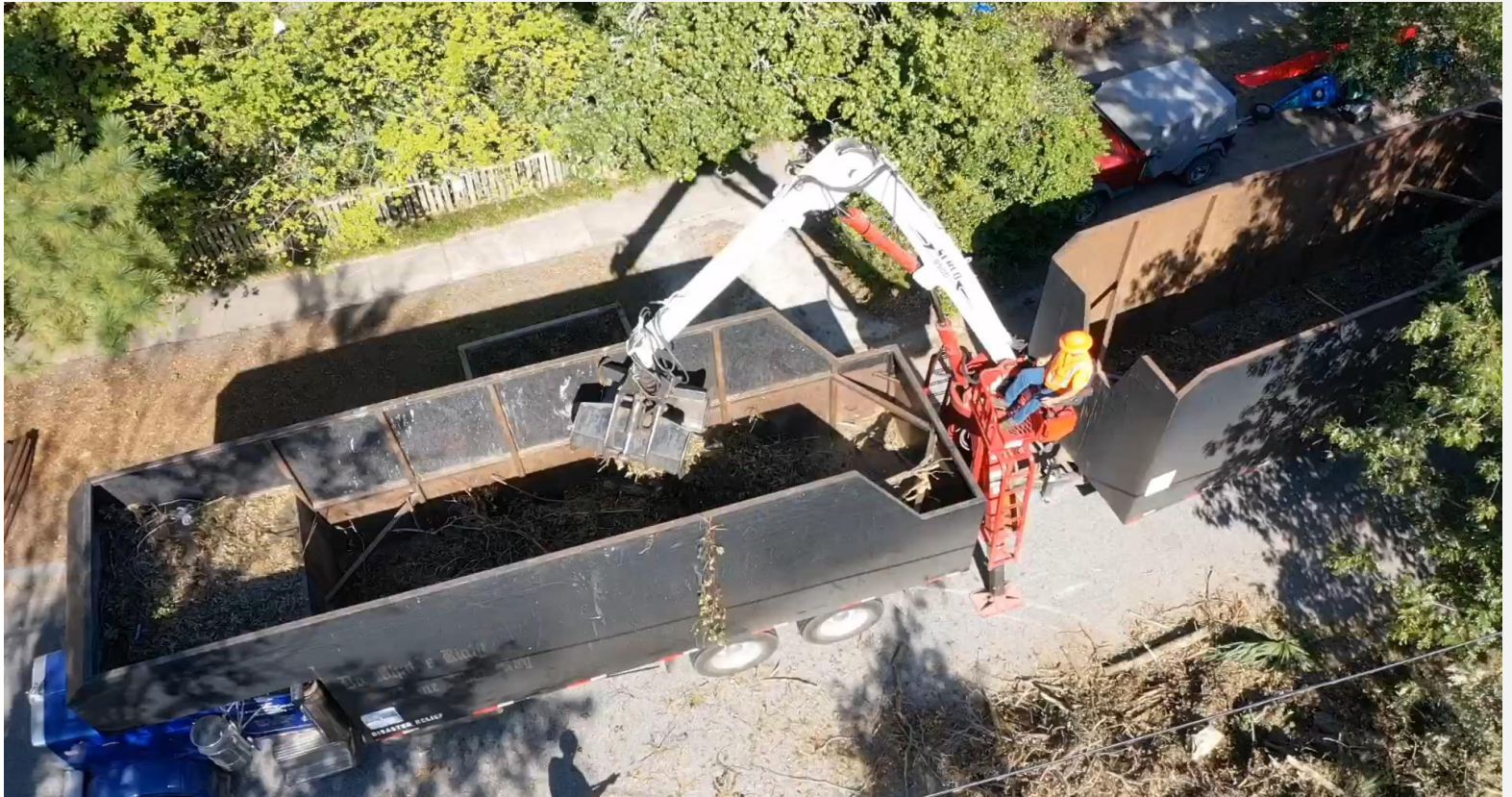
10 feet

AshBritt



AshBritt

AshBritt



AshBritt



AshBritt



AshBritt



AshBritt

AshBritt



AshBritt





DRC Emergency Services

Wes Holden

Director of Government Relations

DRC Emergency Services



HURRICANE HELENE



DRC Emergency Services



HURRICANE MILTON



DRC Emergency Services



HURRICANE HELENE



DRC Emergency Services



HURRICANE BERYL



DRC Emergency Services



DRC Emergency Services



DERECHO STORM



DRC Emergency Services



DRC
EMERGENCY SERVICES
Striking Back

DRC Emergency Services



HURRICANE FRANCINE



DRC Emergency Services



DRC Emergency Services





CrowderGulf, LLC

Joe Hayes

Regional Manager - Florida



Synergy DR

Joe Gross

Executive Vice President/Director of Operations