



Long-Term Recovery Why Wait?

Why fast, targeted repairs matter for survivors, communities, and recovery



Introductions of Presenters

Chris Johnson

Erin Lollar-Lambert

Aaron Barreda

We Should Not Wait



- US Chamber of Commerce: A multi scenario economic study found that every \$1 spent on resilience and preparedness yields about \$7 in avoided economic costs (and up to \$13 when including broader impacts), indicating large net savings when mitigation and early recovery actions reduce building costs
- Damage to homes disrupts safety, health, income and community stability
- Delays in home repair increase risks: secondary hazards, health problems, displacement and higher long-term costs.



Timeline of Disaster

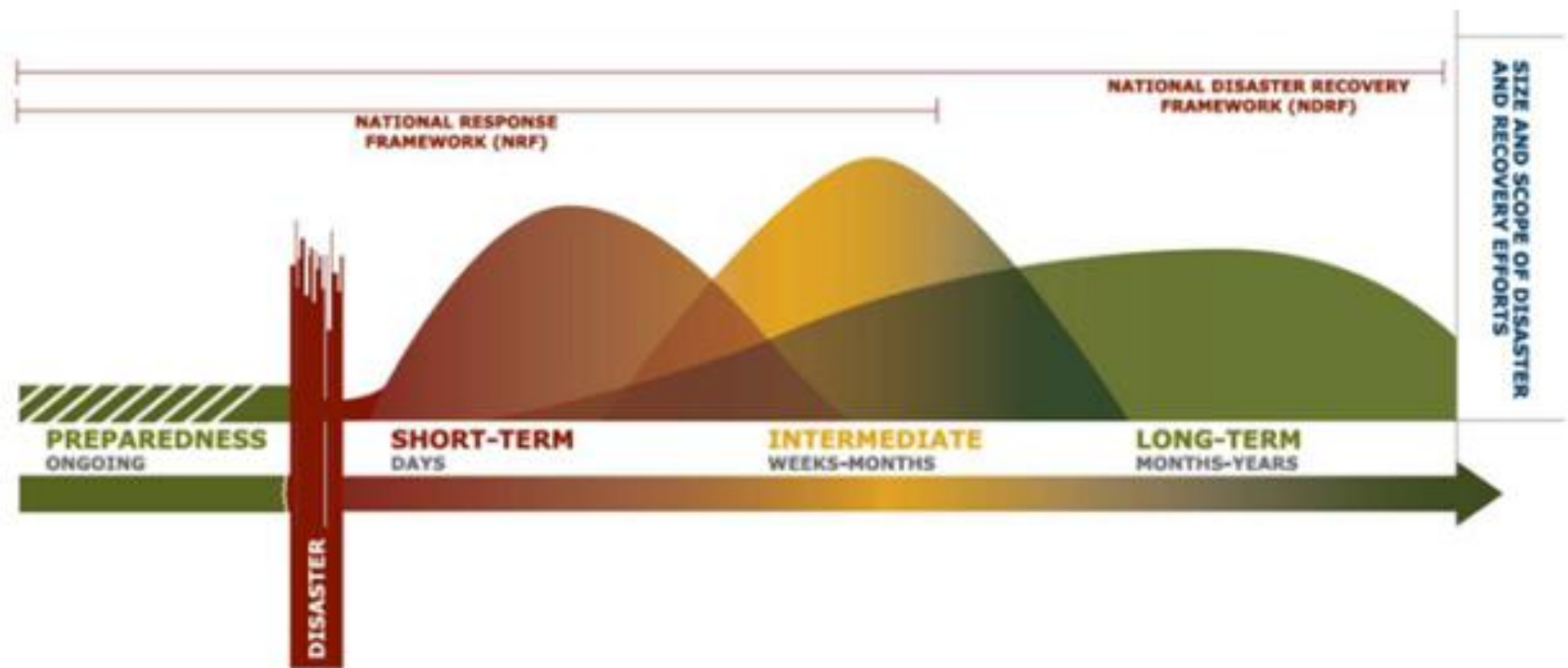
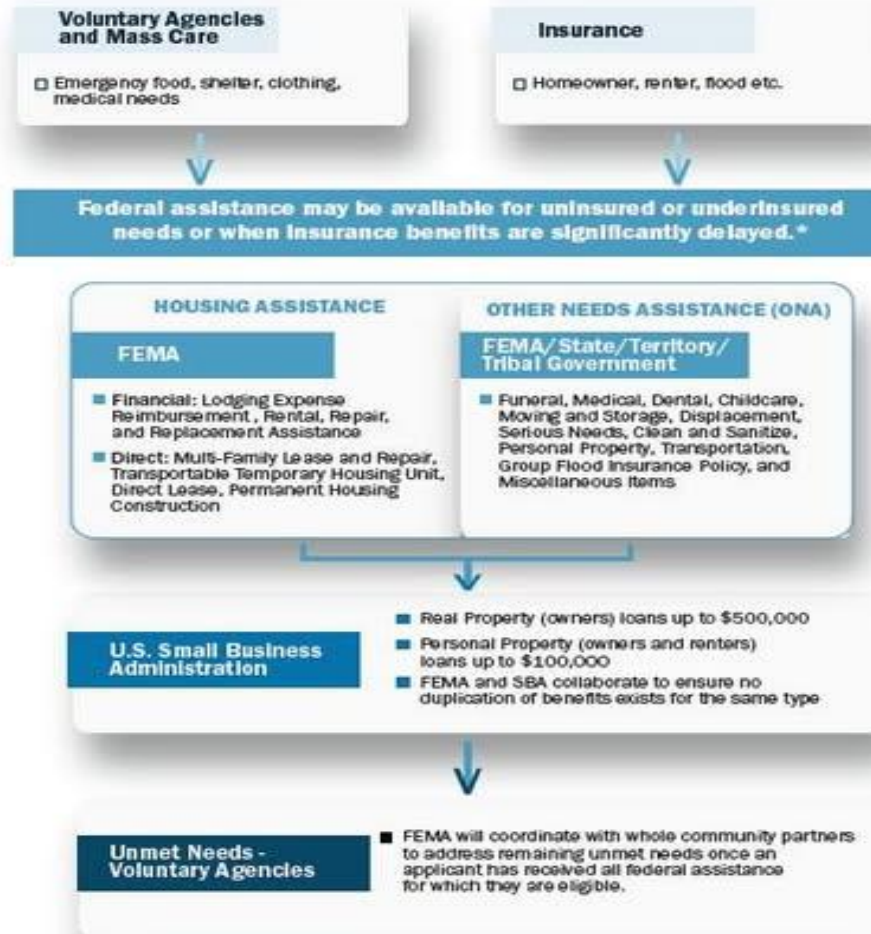


Figure 1: Recovery Continuum

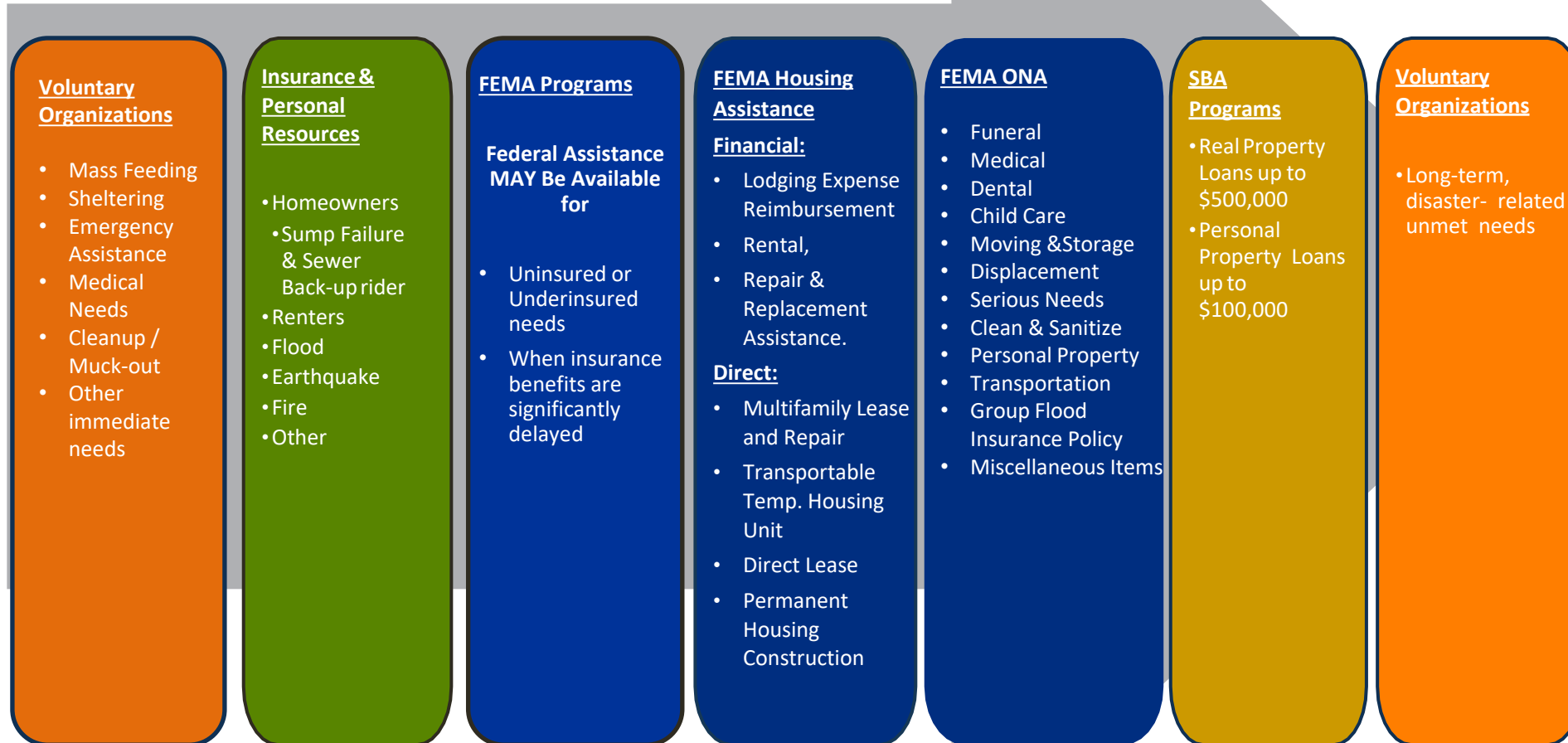
Disaster Assistance Sequence of Delivery



*Eligibility for Federal assistance is based on each applicant's individual circumstances as they relate to each program conditions of eligibility. Not all applicants will be eligible for all forms of Federal assistance.



Sequence of Delivery



Inspections/Assessments after a Disaster

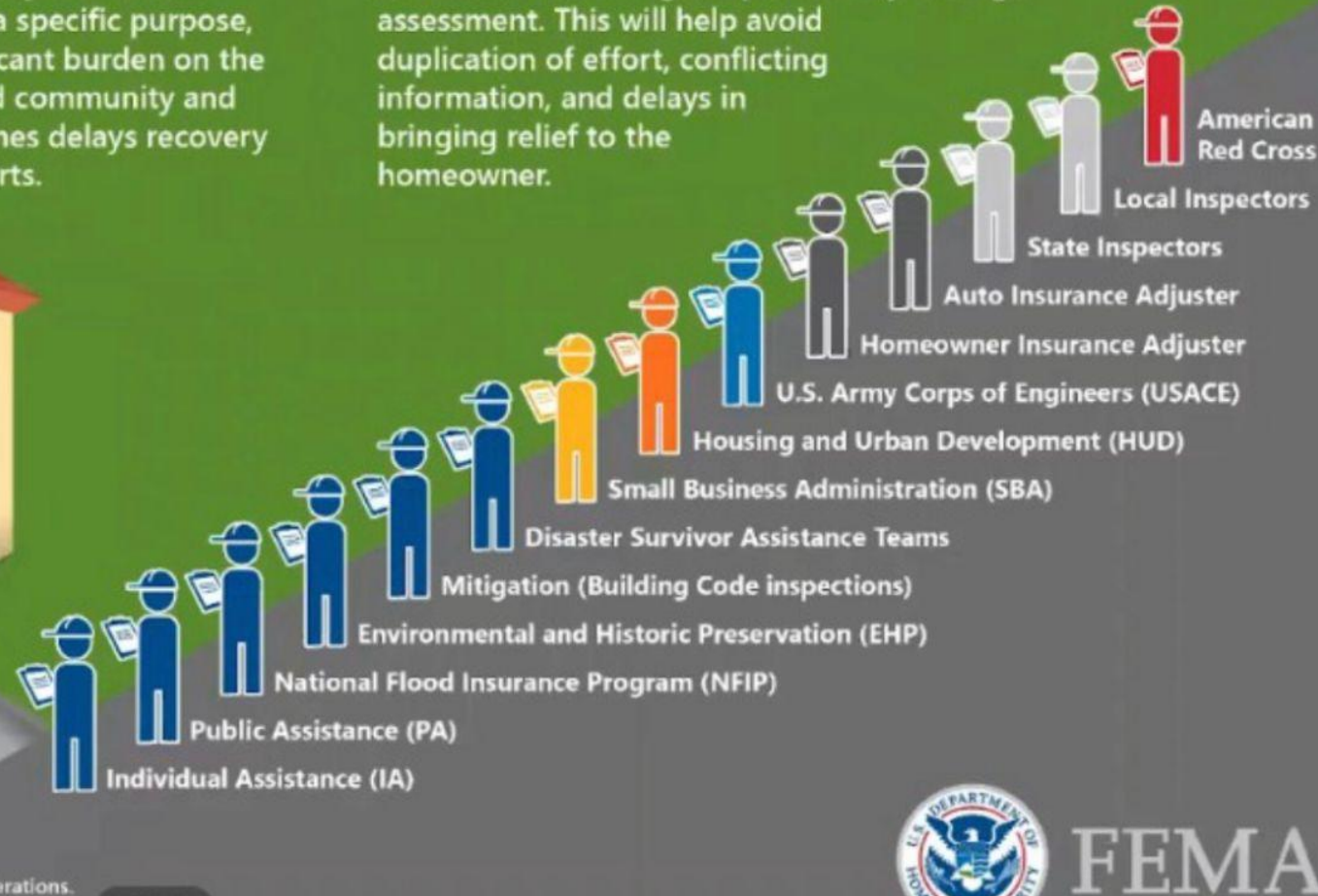
Assessments are an essential part of the response and recovery process and are critical for assessing the size, scope, and severity of an event.

THE CHALLENGE

When a home is damaged as a result of a natural or man-made disaster, numerous damage assessments are performed to assess the safety of the structure, quantify the damage, and determine financial aid from the government and/or insurance company. While each assessment is conducted for a specific purpose, this puts a significant burden on the survivors and community and often times delays recovery efforts.

THE SOLUTION

Consistent standards and data sharing mechanisms are needed so various programs and agencies (e.g., state and local authorities, federal agencies, statutory authorities, non-profit organizations) can leverage the same data collected during the preliminary damage assessment. This will help avoid duplication of effort, conflicting information, and delays in bringing relief to the homeowner.



Faster Focused Assistance



- Immediate safety and health protection
- Reduced displacement and sheltering needs
- Faster economic and emotional recovery
- Lower long-term rebuilding costs
- Strengthened community resilience
- Improved equity and access for vulnerable households

Meaningful Volunteerism and Focused Response

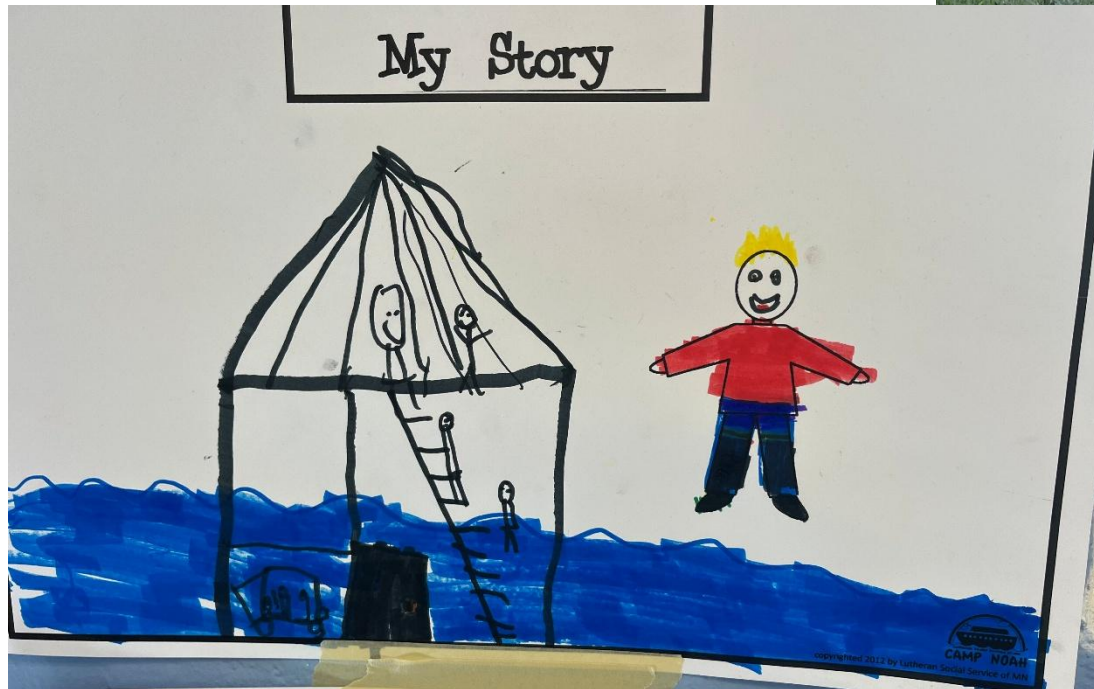




Disaster Survivors:

- Experience a variety of emotions, they're vulnerable after an event
- Will be grieving the losses incurred after a disaster
- Maybe traumatized, depressed, angry confused, lack the ability to make sound decisions
- By acting early and utilizing disaster case management we can help mitigate trauma

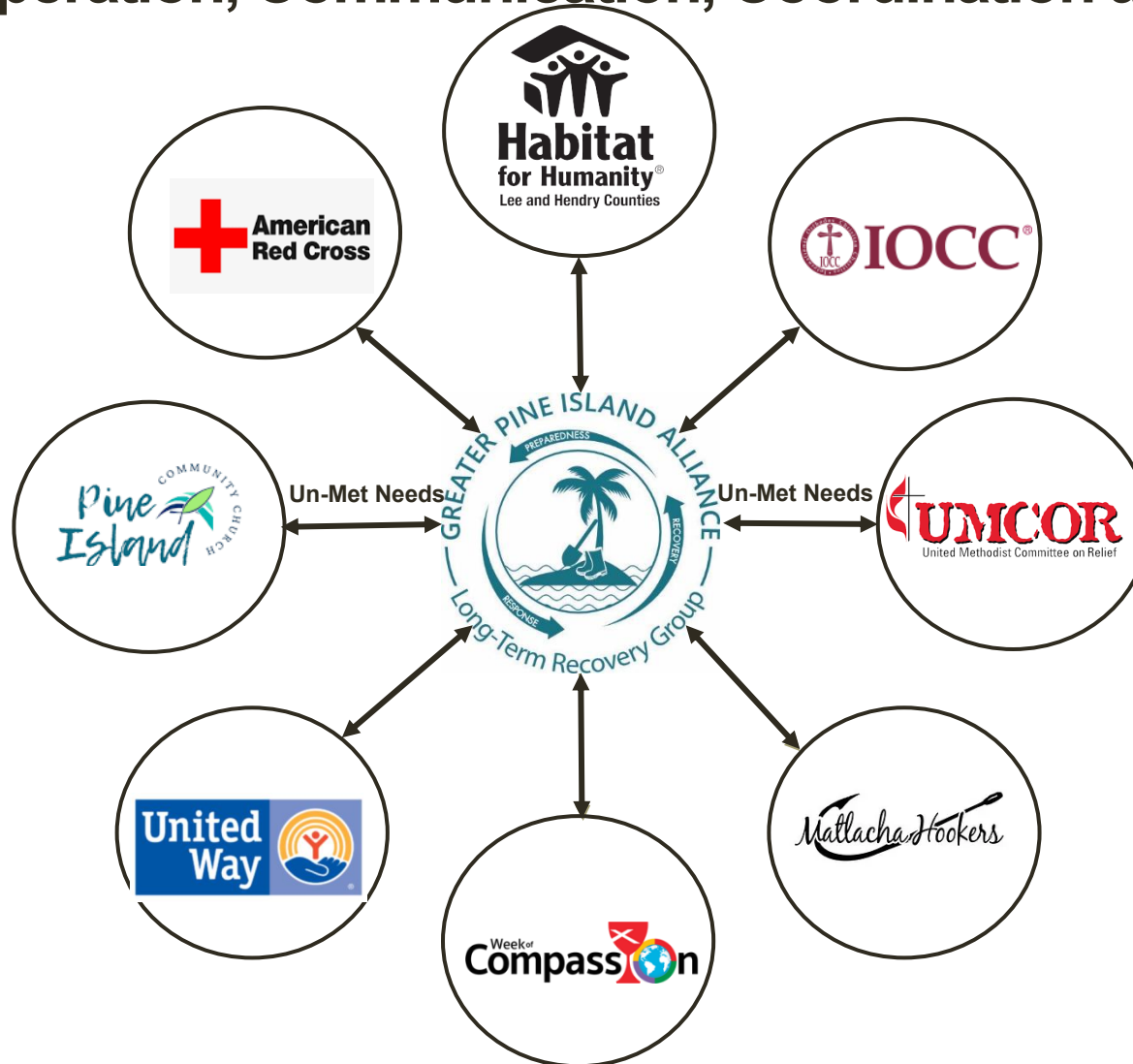
Emotional / Spiritual Impacts



GPIA Hub and Spoke



Cooperation, Communication, Coordination and Collaboration



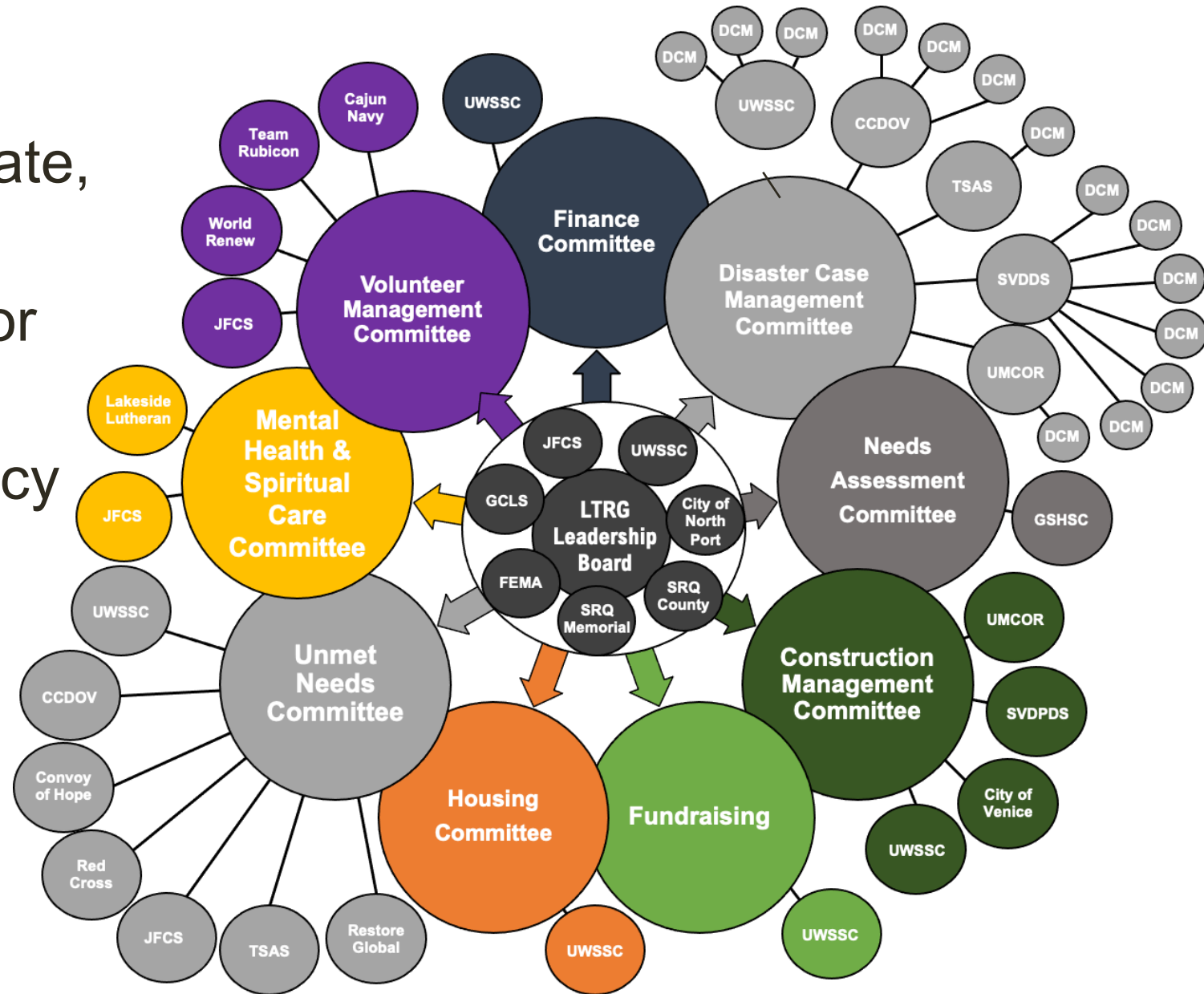
- Disaster Case Management / Navigation
- Connecting people with organizations that can best meet their needs
- Un-Met Needs flow in both directions based on an organization's capabilities

This slide demonstrates the concept and is only a small sample of all organizations involved.

- Rebuilding Lives and Homes
- Leveraged Federal, State, and Local Funds
- Streamlined Process for Survivors
- Building Local Resiliency



SARASOTA COUNTY
LONG TERM
RECOVERY GROUP



Thank You Community Partners



Cooperation, Communication, Coordination and Collaboration

GOVERNOR'S HURRICANE CONFERENCE®