



Welcome to the 2024 GHC Training Session

- These sessions are available to attendees that have registered and are identifiable by the blue and purple name badge.
- Pre-enrolled attendees are guaranteed a seat. All others are first-come, first-serve if space permits.
- The Room Monitor will administer a sign-in sheet that you must sign. Pre-enrolled attendees: Please sign next to your name. Names are in alphabetical order by last name.
- If you are a walk-in (not pre-enrolled), print your name **legible** on the sign-in sheet.
- **You must attend and sign-in every day on multiple day sessions.**
- The sign-in sheet will be picked up 30 minutes after the session starts.
- A certificate will be provided at the completion of the session.



Partnerships to Bridge the Gap - Mass Care and Community Based Healthcare



Gianna Van Winkle, Director of Emergency Management Programs



Elisa N. DeGregorio, Health Care Administrator
Nicolas Morrow, Health and Medical Coordinator



Elodie Dorso, Chief Executive Officer
Frank 'J.R.' Gantt, Director of Facilities & Project Management



Training Objectives

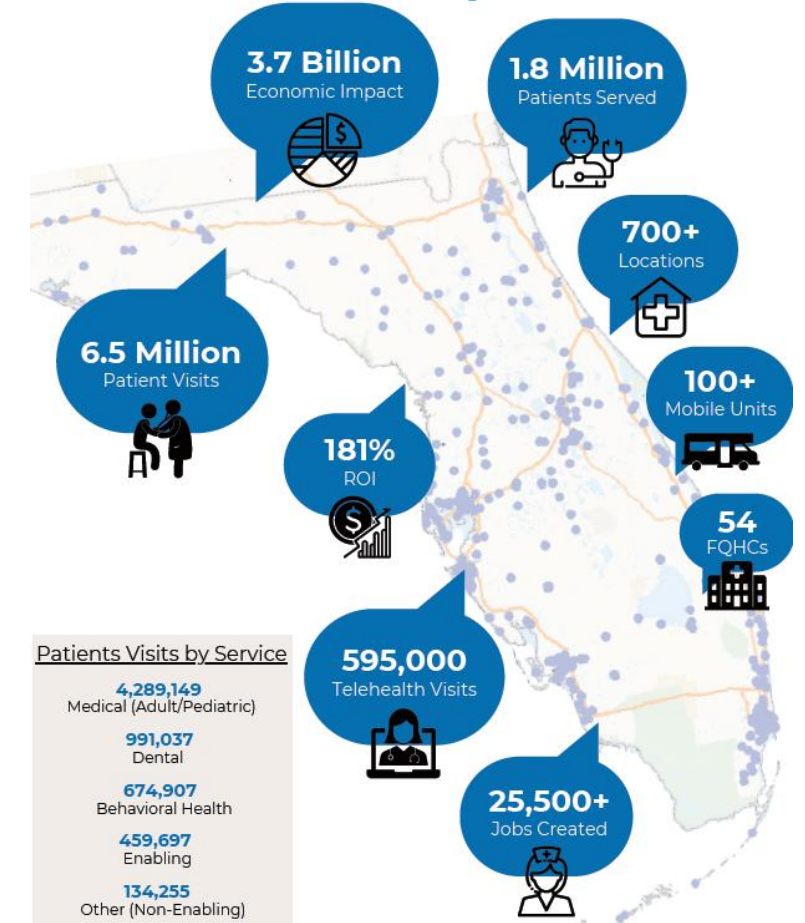
- Raise awareness of Community Health Center services and emergency management efforts and capabilities
- Explore partnership opportunities that can support collaborative approaches to meeting community-wide needs during response and recovery
- Highlight the shared recovery goals across County Emergency Management, Community Health Centers, and various response partners
- Discuss how partners can work together to close potential gaps between mass care and community-based healthcare
- Share current examples from Hurricanes Helene and Milton

Florida's Community Health Centers



- Community Health Centers (CHCs) are not-for-profit, community-based healthcare organizations that provide affordable, high-quality, and comprehensive primary and preventive medical, dental, and mental health care, particularly to underserved populations.
- In Florida, 54 Health Center Organizations provide services to residents in all 67 counties in Florida at 850 locations, delivering care to more than 1.8 million patients during 7 million patient visits annually.
- FACHC is Florida's Primary Care Association; we represent CHCs and support their provision of high-quality, comprehensive primary care through advocacy efforts and key programs that provide CHCs with training and technical assistance to meet evolving needs.

Our members' *impact* in 2023





FACHC Partnerships



FLORIDA HEALTH CARE COALITIONS



2024 Storm Season & Ongoing Support



FACHC Response Capabilities:

- **Situational Assessment:** Provide CHC leaders and Emergency Management teams with current, decision-relevant information regarding the nature and extent of the hazard, any cascading effects, and the status of the response.
- **Operational Communications:** Ensure the capacity for timely communications with CHCs and partners in support of situational awareness and health center operations.
- **Environmental Response Coordination:** Provide information and resources for CHCs to implement appropriate measures that promote safe response operations and continuity of services for the affected communities.

Identified Opportunities and Planned Actions:

Continue/increase participation in VOAD & engagement with NGOs

Continue VOAD participation; explore benefits of Associate or State membership

Engage with state and local emergency management to raise awareness of CHC capabilities and resource needs; explore additional opportunities and planned partnerships

Develop draft MOU between CHCs and local partners to outline prospective role and opportunities for collaboration.

Explore partnerships/opportunities to address potential disruptions in local supply chain (fuel, water, etc.)

Engage potential vendors, consult with CHCs, NACHC, and PCAs to gain insights and explore potential partnerships (coalitions, contractors, etc.) and/or master service agreements.



Elisa DeGregorio
Health Care Administrator



Nicholas Morrow
Health and Medical Coordinator



Health Care for the Homeless

- FQHC within Human Services Dept
- Special Pop of Homeless Individuals
- Bayside Health Clinic
 - Co-Located next to County's largest homeless shelter – Safe Harbor
 - Integrated Services in one site; Primary Care, Dental, Mental Health and Substance Use, Occupational Therapy, Legal Services, Case Management
 - Re-Opened August 2024 after 2,000 sq. ft. expansion





Health Care for the Homeless

- Mobile Health Care
 - Primary Care meeting patients where they are at.
- Larger Mobile Unit – 2 exam rooms, intake/case management
 - Serves 5 sites throughout County weekdays
- Street Medicine Program – exam room and linkages with mental health services
 - Targeted sites where homeless frequent
- Collaborate and contract w/healthcare providers
 - Florida Department of Health – clinical primary care provider of program
 - Network of specialty providers and pharmacy locations





Health Care for the Homeless

Pinellas County

JOIN OUR BAYSIDE GROUP!

EVERY TUESDAY @ 3:30PM

HEALTH & WELLNESS GROUP

>>>>> Bayside Health Clinic <<<<<
Location: 14808 49th Street North Clearwater, FL 33762

It can be hard to manage your health while doing what you need to do to take care of yourself.

Come join the Health and Wellness Group to learn strategies and tips to help you manage your health.

Bayside staff will share ways to help your health, like manage your medicine, understand your different health conditions, and overall help yourself feel better.

- **Healthcare & Homeless**
 - Chronic Diseases More Prevalent
 - Shorter life span
 - Mental Health & Substance Use Concerns
 - Stigma – Accessing and Receiving care
 - Access to Needed & Affordable Services



Human Services & Emergency Mgmt

- Emergency Management
 - Unique Role Served
 - Human Services Staff – Sheltering Lead
 - Florida Department of Health Staff – Special Needs Lead
 - Homeless Sheltering & Preparation
 - EOC – Side by Side w/DOH, EM etc


PUBLIC SHELTERS

When Pinellas County issues an evacuation order, officials will announce which shelters are opening. **For different ways to stay informed, see page 8.**


What to expect at public shelters:

- Shelters are outside of the evacuation zones.
- They provide basic food and water.
- Special dietary foods are not provided; you may bring your own food.
- Be aware that power may go out.

Families settled into their spots in the shelter at John Hopkins Middle School in St. Petersburg as Hurricane Irma approached in 2017. [Times]




There are three types of shelters in Pinellas County:




General population shelters

- Open to all individuals in Pinellas County.
- No generators, so power may go out.
- No cots, chairs, air mattress or bedding provided.
- **See what you will need to bring, page 6.**



Special needs shelters

- For those who are dependent on oxygen or electricity for medical equipment, or who need minimal medical assistance.
- Cots are not available for everyone.
- Pets are not permitted. **See who to plan for, page 7, for options.**
- **See Special Needs Evacuation Program, page 7.**
- **See what you will need to bring, page 6.**



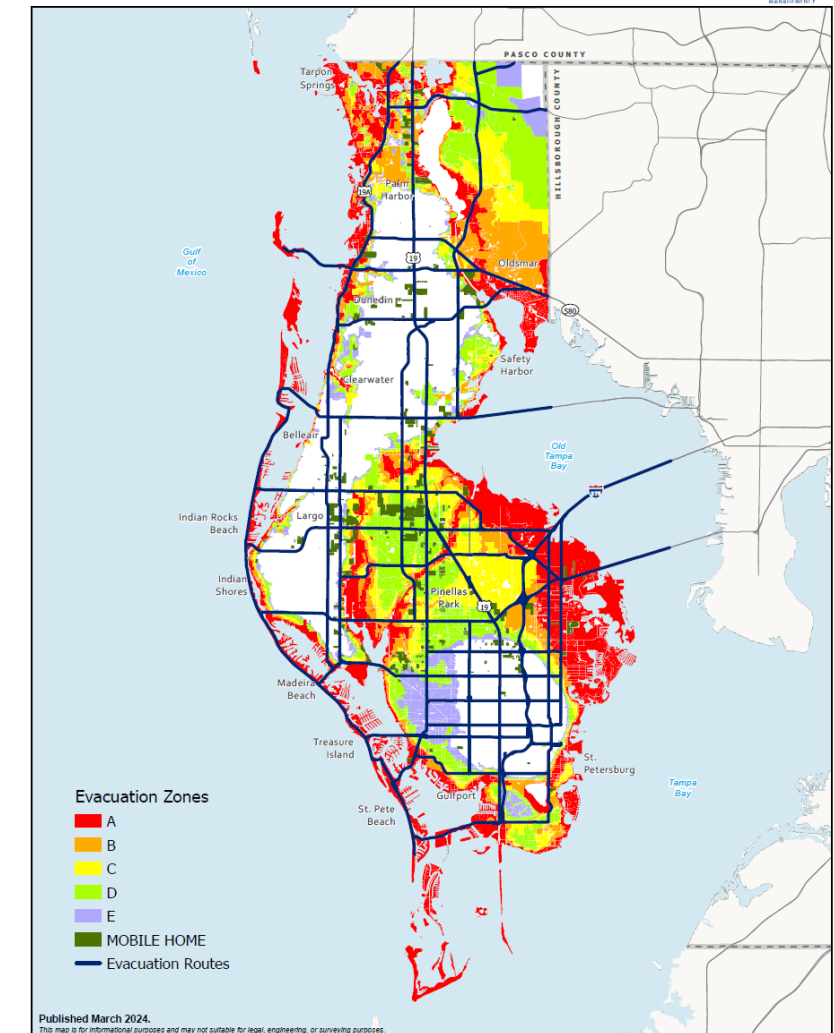
Pet-friendly shelters

- Dogs and cats are kept in a separate location from owners, in a crate or carrier.
- The owner must be staying in the shelter to feed and walk their pet.
- Pre-registration is not required.
- **See what you will need to bring, page 6.**

Pinellas County – County Overview & Helene/Milton Stats

- **Pinellas County**
 - Most densely populated County in Florida: 3,500 residents per sq mile
 - 6th most populated County: 959,107 (2020 Census)
 - Peninsula within a peninsula; Can be cut off from resources due to bridge access being severed
 - 67% of the County located within an evacuation zone
- **Hurricane Helene**
 - Evacuation order for Level A and Mobile Homes
 - 6 shelters (3 SpNDs) opened with 1,700 sheltered
 - 6.67' of Storm Surge (Possibly 7' in some areas)
 - 33,566 residential structures damaged
 - 43% power outage
- **Hurricane Milton**
 - Evacuation order for Levels A, B, C, and Mobile Homes
 - 14 shelters (3 SpNDs) opened with 12,000 sheltered
 - 101MPH gust recorded, 20 inches of rain in some areas of the County
 - 12,832 residential structures damaged
 - 83% power outage

Pinellas County Evacuation Zones



Pinellas County – Overview of The Special Needs Evacuation Program (SNEP)



- Provides transportation and sheltering assistance to qualifying residents
- Must have transportation and/or special medical needs to qualify
 - Eligible special medical needs include, but are not limited to:
 - Dependence on supplemental oxygen
 - Need for electricity to power life-sustaining medical devices
 - Moderate or severe dementia
 - Advanced mobility challenges
 - Requiring assistance with your medication administration

INDIVIDUALS WITH SPECIAL NEEDS Having a plan is critical.

Eligibility

Residents of all ages who have medical needs or require transportation assistance may be eligible for the program. Some examples include:

- Requiring assistance with routine care and medications.
- Dependent on oxygen or electricity for medical equipment.
- Requiring assistance with walking or getting out of bed.
- Requiring transportation assistance.

There are multiple ways to register:

- Ask your home health care provider.
- Register online at pinellas.gov/SpecialNeeds.
- Request a form. Call Pinellas County Emergency Management at 727-464-3800.

Do not wait until an emergency to register for the program. You may not be picked up if you register too late.

Build an emergency kit.
See what you need, page 6.



ACTION

Register for the
Special Needs Evacuation
Program throughout
the year.

KIDS ACTIVITY

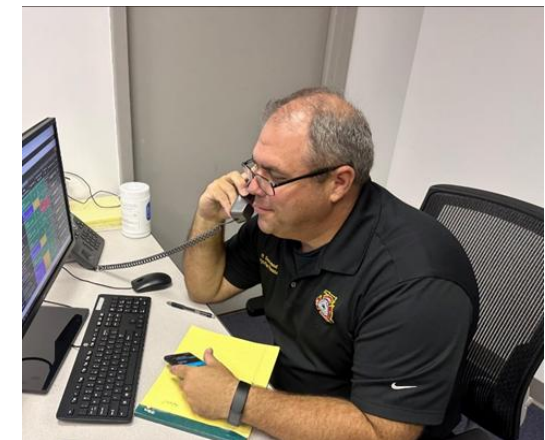
IMPORTANT HURRICANE SUPPLIES

Look through the Tampa Bay Times for photos and images of hurricane supplies. Print or cut out the photos to create a poster. Label the images for different needs. Are there items and resources for people of all ages with special needs or disabilities? Share your poster and supply list with your classmates and family. If possible, hold a hurricane supply collection drive in your classroom or family. Include the different items people might need during a hurricane.

Florida Standards: SC.68.N.1.1; ELA.68.EE.1; ELA.68.EE.2; ELA.68.EE.3; ELA.68.EE.4; ELA.68.R.2.1; ELA.68.R.2.2; ELA.68.R.2.4; ELA.68.C.1.3; ELA.68.C.1.4; ELA.68.C.2.1; ELA.68.C.3.1; ELA.68.C.4.1; ELA.68.C.5.1; ELA.68.F.1.3; ELA.68.F.1.4; ELA.68.V.1.1; ELA.68.V.1.3

Pinellas County – Overview of The Special Needs Evacuation Program (SNEP)

- Approximately, 3,800 County residents are registered in the SNEP.
- During Hurricanes Helene and Milton, Pinellas County transported over 900 residents from evacuation zones to shelters or medically managed facilities through the SNEP.
- Once primary shelters close, remaining populations are consolidated to step-down shelters located at community and recreation centers in the County. DOH staffs the special needs step-down shelters.



Pinellas County – Lessons Learned/Unmet Needs Identified



Medical Support Gaps in General Population/Pet-Friendly Step-Down Shelters

- Prolonged shelter stays contributed to residents' health decline.
- Elderly clients did not qualify for Special Needs Shelters but still required monitoring.
- Red Cross medical staff needed additional support to meet demand.



Pinellas County – How CHCs can support local response Pre-Post Storm

- Include CHCs in EOC coordination calls and meetings
- Strengthen collaboration during "blue skies" to understand CHC capabilities and leverage their expertise effectively.
- Prepare patients
 - Know their Health Conditions
 - Med Refill Awareness
 - Conduct campaign May/June
- Special Needs registration = transportation (transport or own transport)
- Work w/homeless shelter providers on special needs of clients (checklist for shelter providers)
- Sign up for Alert Pinellas



Pinellas County – How CHCs can support local response Pre-Post Storm



**After
the
Hurricane
Passes**



**Expect normal
services to be
disrupted.**

- CHCs can quickly address community medical needs post-disaster
- Re-opening as soon possible
 - Staff Assessments & Availability
- Mobile units
 - Step-down shelters/Disaster Recovery Centers
 - Disease outbreaks, testing, screening, connection to resources
 - Red Cross collaboration
- Partnerships (FACHC)
 - Resource Sharing - where RX pharm & clinics are open



evarda

HEALTH

CARE THAT EMPOWERS

GOVERNOR'S HURRICANE CONFERENCE®

A History of Caring

Evara Health, formerly Community Health Centers of Pinellas, was founded in 1980 as the vision of Dr. Johnnie Ruth Clarke, the first African American woman to obtain her PhD from the University of Florida's College of Education.

Dr. Clarke was a civil rights activist and a pioneer in the fight against sickle cell anemia. Her activism also established modern medical services for the underserved African-American residents of St. Petersburg.

We opened our first health center in 1985, on the grounds of the Lakeview Presbyterian Church as the Johnnie Ruth Clarke Health Center.

As we outgrew that first clinic, we transformed the historic Mercy Hospital site in February 2004, making it a state-of-the-art facility for the community.

As we celebrate our 45th anniversary in 2025, Evara is still a not-for-profit health care organization, and we still provide affordable, primary health care services to the underserved, low-income, uninsured, and underinsured communities across Pinellas County.

We are proud to continue honoring Dr. Clarke's legacy.



About Us



**Federally Qualified
Health Center (FQHC)
since 1993**



**Over 40 years of
serving the
community**



**Formerly Community
Health Centers of
Pinellas, Inc.**



**19 health centers
throughout Pinellas
County**



**Served over 65,000
patients in 2024**

evara
HEALTH

GOVERNOR'S HURRICANE CONFERENCE®

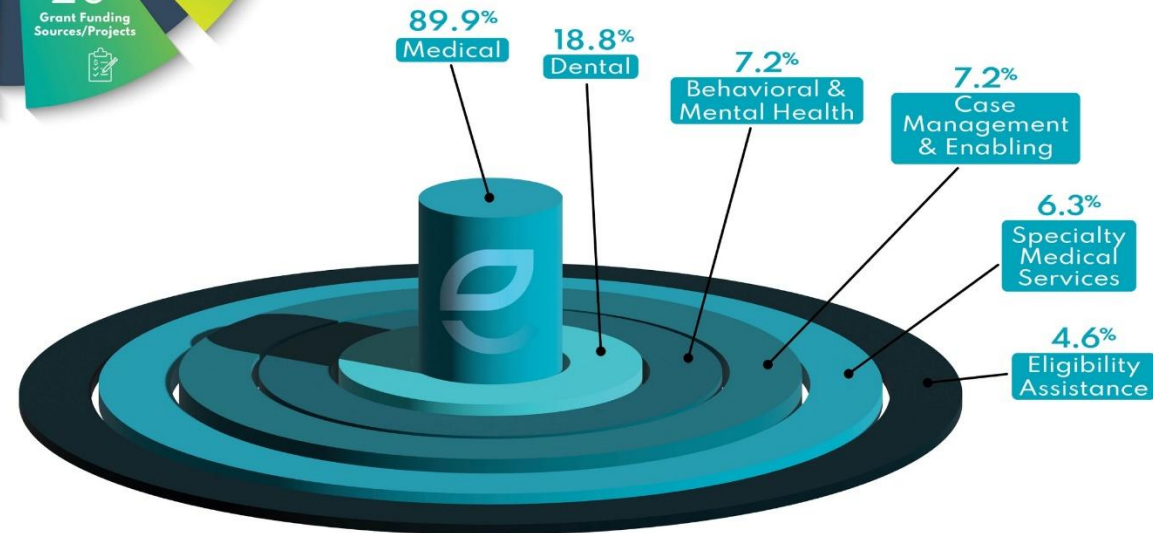




evara HEALTH 2024 IN NUMBERS

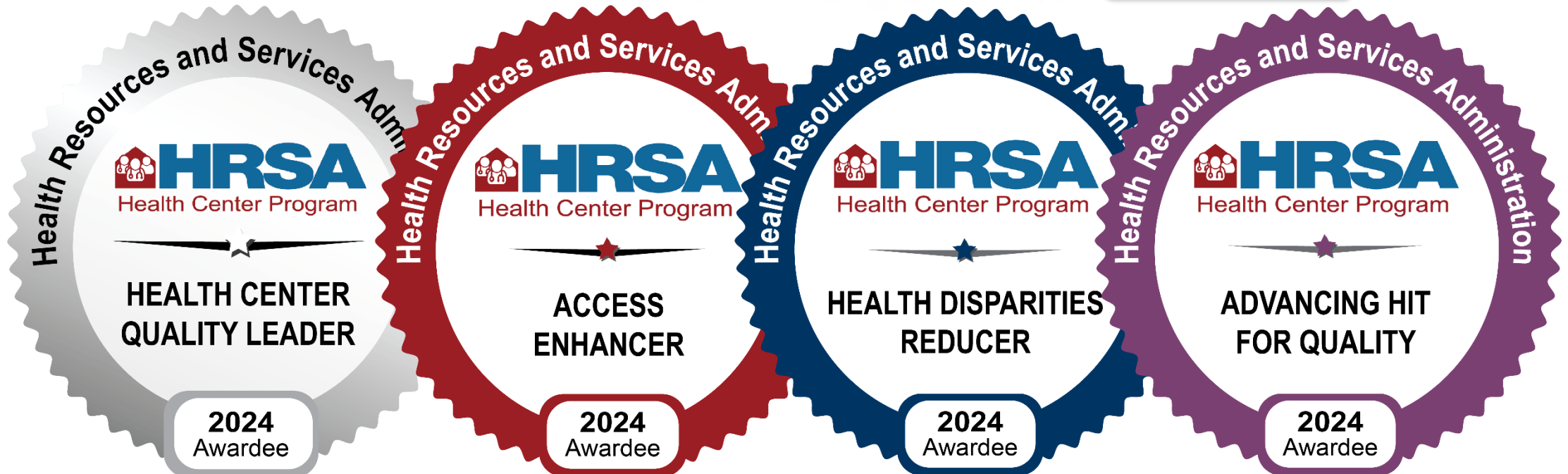


Percent of Patients Receiving Specific Services





Quality and Accreditations



Evara Mobile Health Centers



Evara Mobile Health Centers





Hurricane Milton





Evvara Health



GOVERNOR'S HURRICANE CONFERENCE®



Panel Discussion



Contact Information



Gianna Van Winkle, Director of Emergency Management Programs

Website: www.fachc.org | Phone: 850-591-1832 | Email: gianna@fachc.org



Elisa N. DeGregorio, Health Care Administrator
Nicolas Morrow, Health and Medical Coordinator



Elodie Dorso, Chief Executive Officer
Frank 'J.R.' Gantt, Director of Facilities & Project Management
Website: www.evarahealth.org | Phone: 727-824-8100